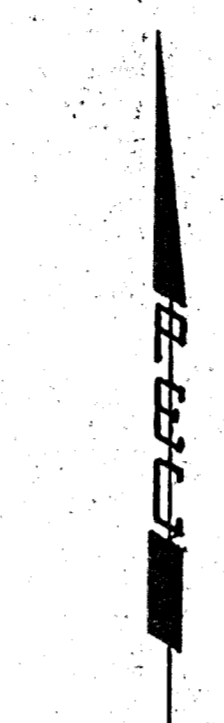
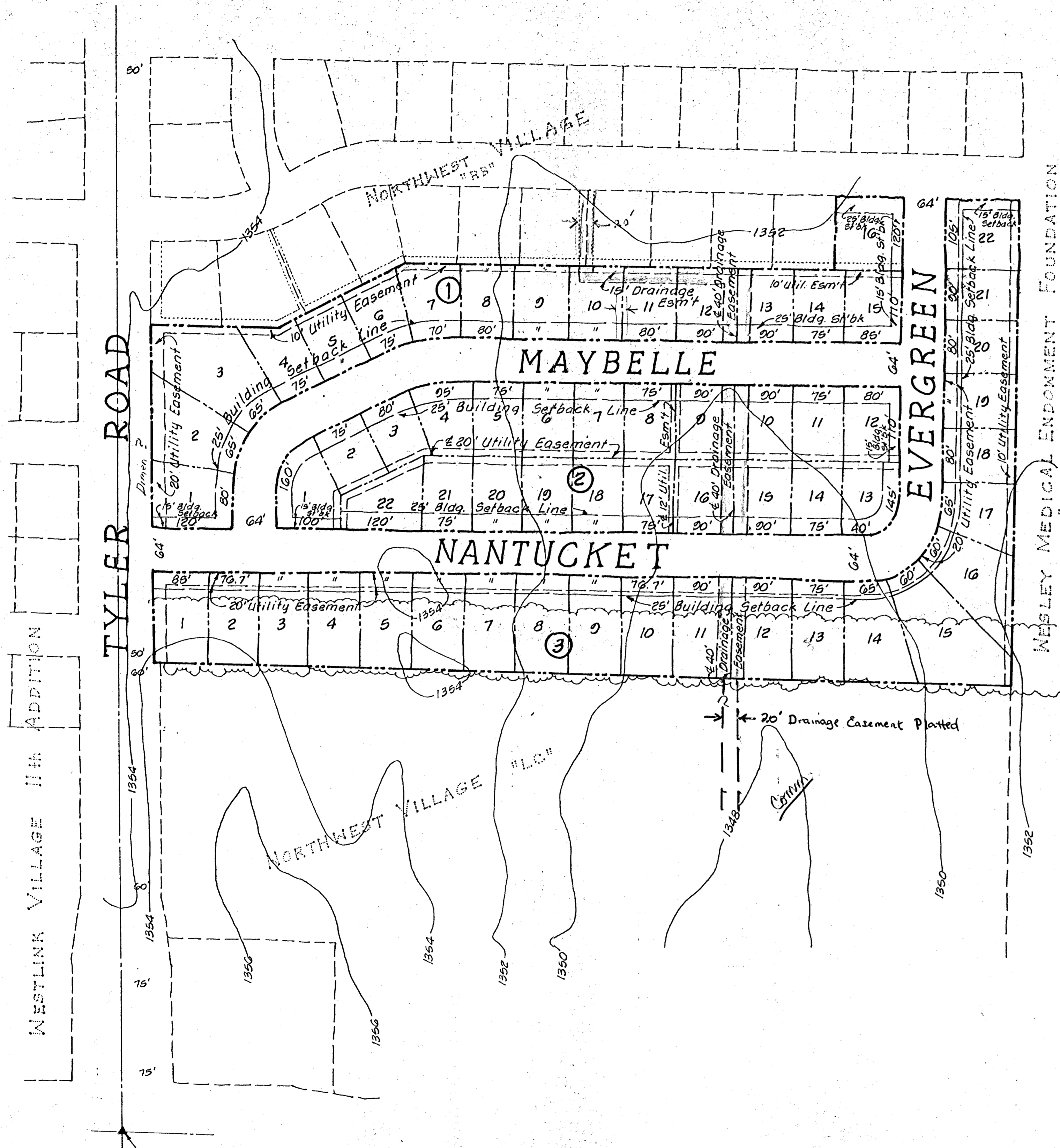


FHWA REGION NO.	STATE	PROJECT NO.	FISCAL YEAR	SHEET NO.	TOTAL SHEETS
7	KANSAS		19		

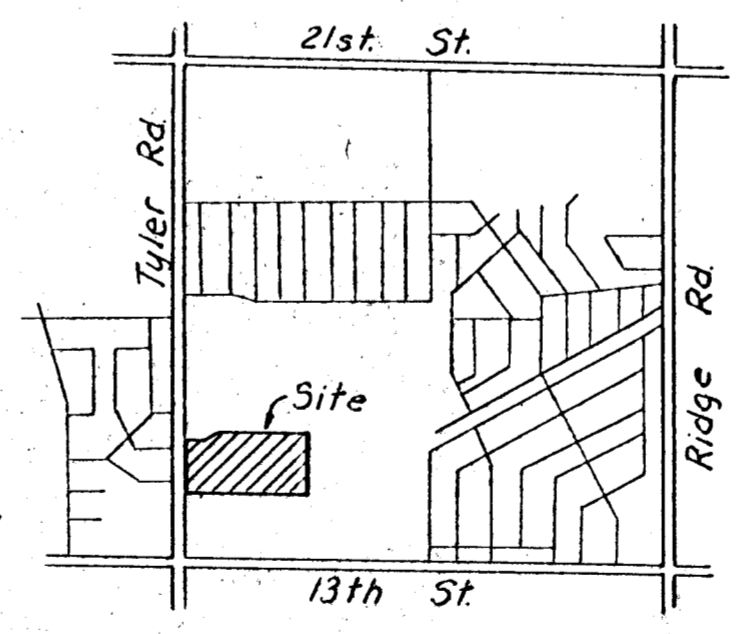


Scale: 1" = 100'  
 February 20, 1981  
 Date of Topo - Nov. 24, 1979  
 BM-172.48 City Std. Disc. @ Tyler  
 & 17th - 36'E. # 31' S. @ both  
 (Converted to MSL) = 1350.88  
 Zoning - R6

Owner/Developer:  
 Thurman W. Smith  
 10300 W. Central  
 Wichita, Kansas 67212

Engineer:  
 Professional Engineering Consultants, P.A.  
 1440 E. English  
 Wichita, Kansas 67211

ALL UTILITIES AVAILABLE



VICINITY MAP

PRELIMINARY PLAT  
**NORTHWEST VILLAGE 2nd ADDITION**

3/4 Cor. SW 1/4  
 Sec. 9, T27S, R1W

Northwest Village 2nd Addn.

**PROFESSIONAL ENGINEERING CONSULTANTS, P.A.**  
 ENGINEERS  
 WICHITA, KANSAS

Designed by	Checked by
Drawn by	Date
	Job No.