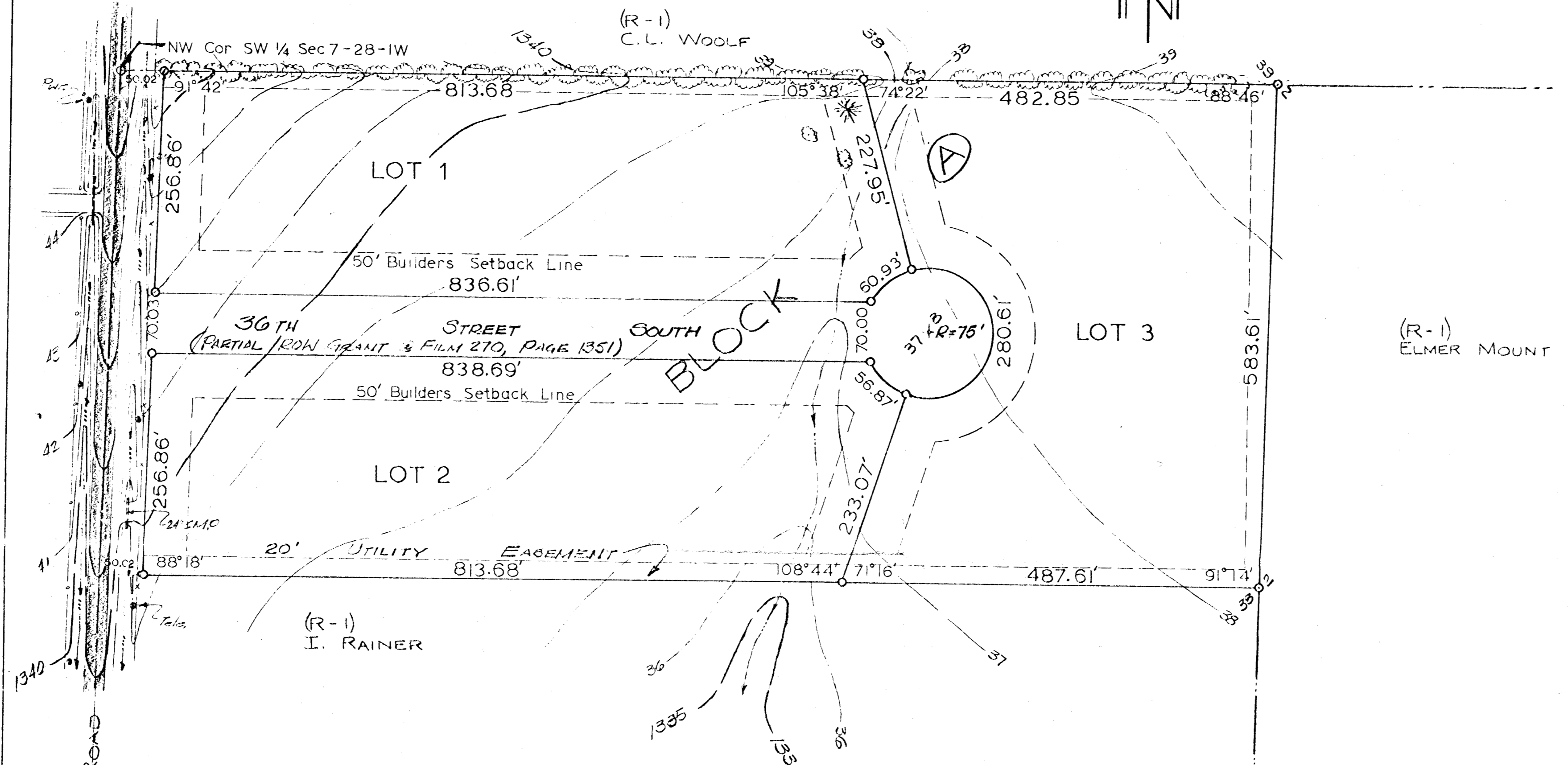


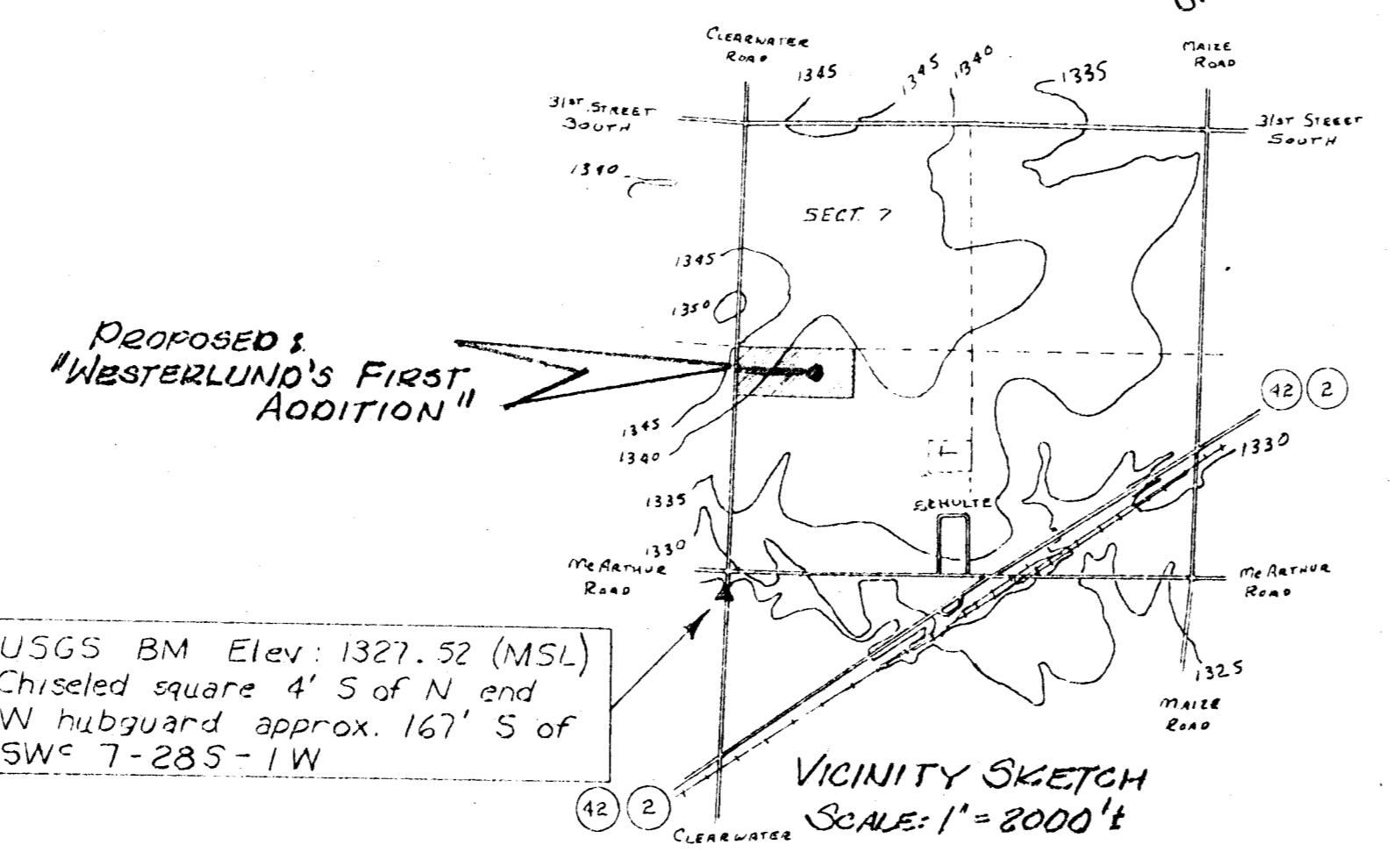
PRELIMINARY PLAT WESTERLUND'S FIRST ADDITION

SEDGWICK COUNTY, KANSAS

Scale: 1 inch = 100 feet



SUBDIVIDER:
C.D. WESTERLUND
100 S. EVERGREEN LN.
WICHITA, KANSAS 67209
PHONE: 722-0462



USGS BM Elev: 1327.52 (MSL)
Chiseled square 4' S of N end
W hubguard approx. 167' S of
SW^c 7-28-1W

T. L. DANIEL LAND SURVEYOR WICHITA, KANSAS	PRELIMINARY PLAT WESTERLUND'S FIRST ADDITION STADIA TOPO: 9 APRIL, 1978	DWG FILE NO. 7737-C-087, 032
		DATE 10 APRIL, 1978