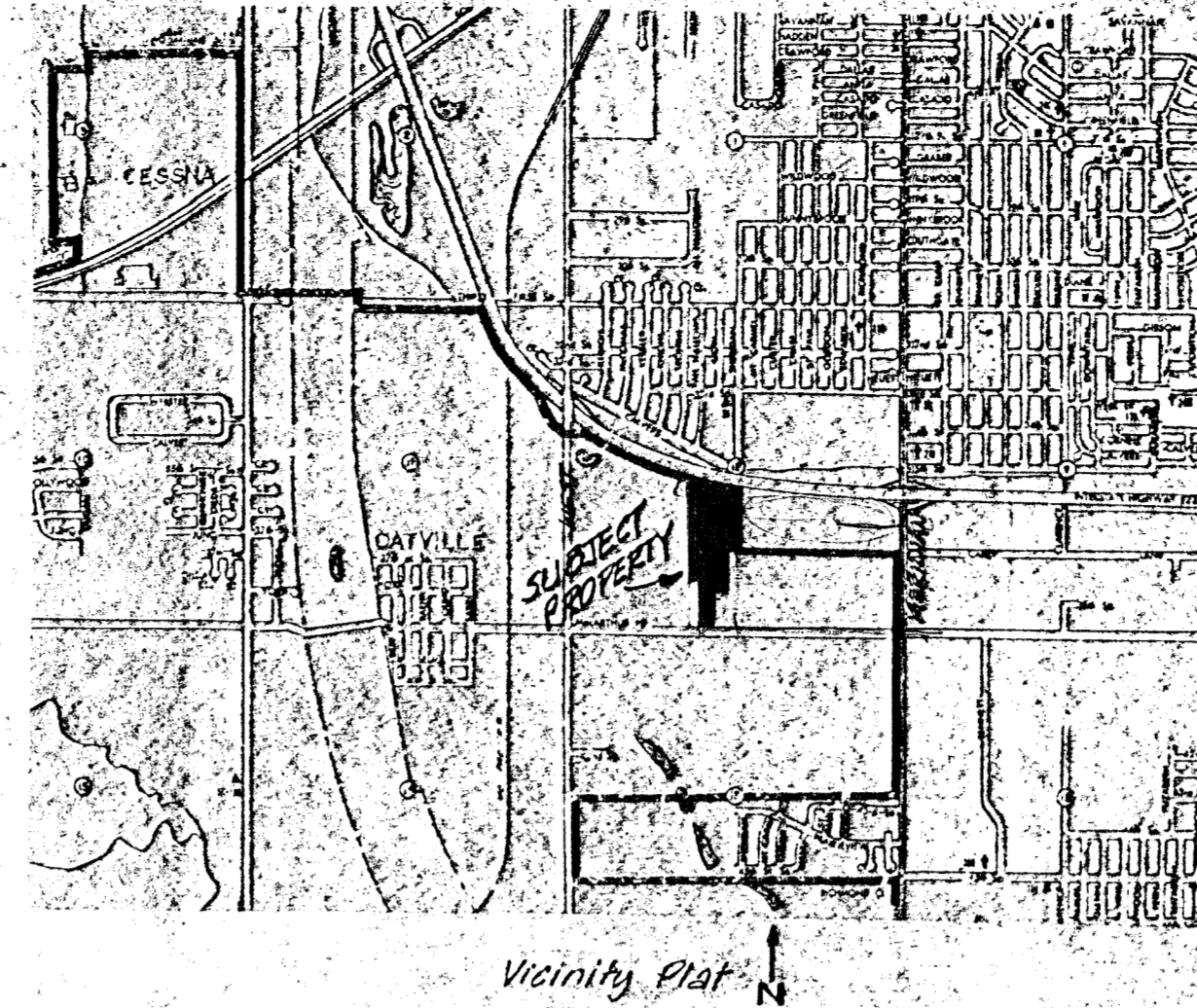


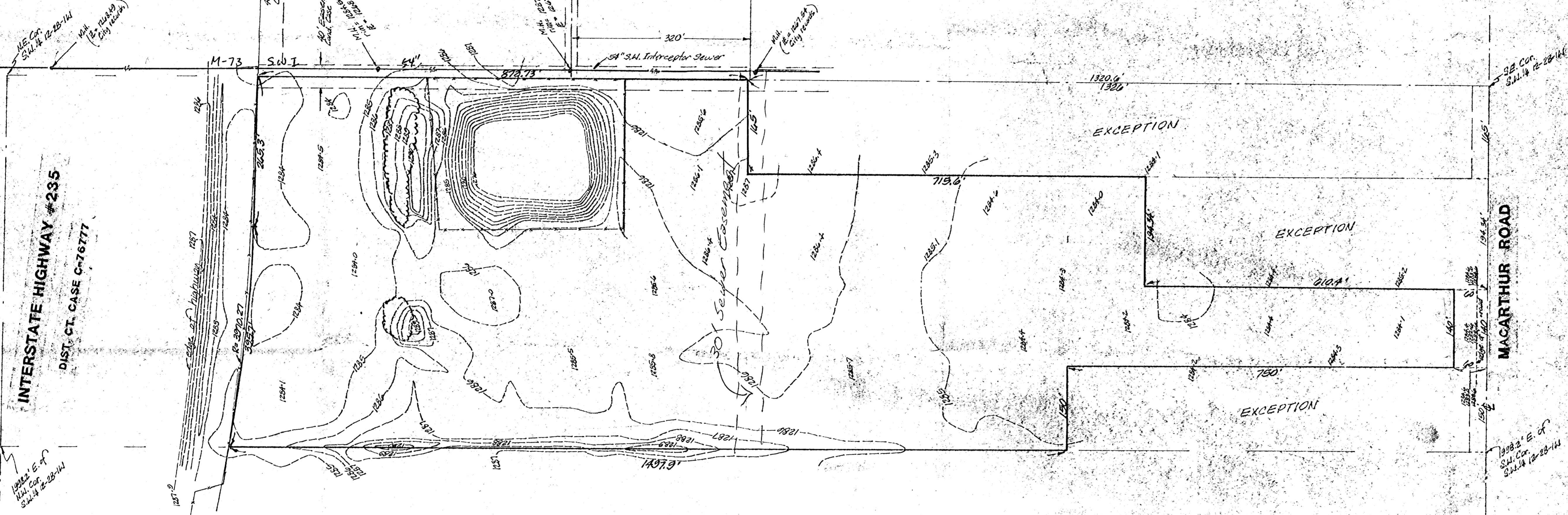
BENCH MARK:
 Top of iron in thimble at
 the SE corner of the S.W. 1/4
 of Sec. 12-28-14
 Elevation = 1284.83 M.S.L.

BETHEL ASSEMBLY BLOCK 1, ADDITION



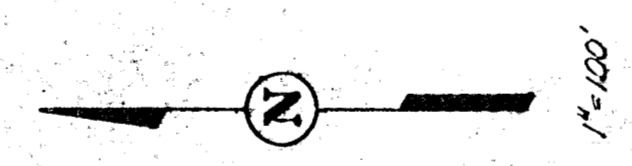
Vicinity Plat

Note: City water line is approximately 1/2 mile from the intersection of MacArthur & W. 10th St.



INTERSTATE HIGHWAY #235
 DIST. CT. CASE C-76777

MACARTHUR ROAD



PRELIMINARY PLAT
WEST SIDE FREE WILL BAPTIST CHURCH ADDITION

A TRACT IN THE S.W. 1/4 OF SEC. 12, TWP. 28-S, R-1W

OWNER: WEST SIDE FREE WILL BAPTIST CHURCH