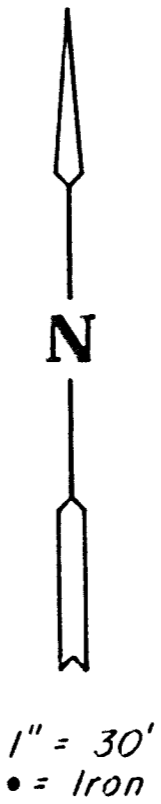
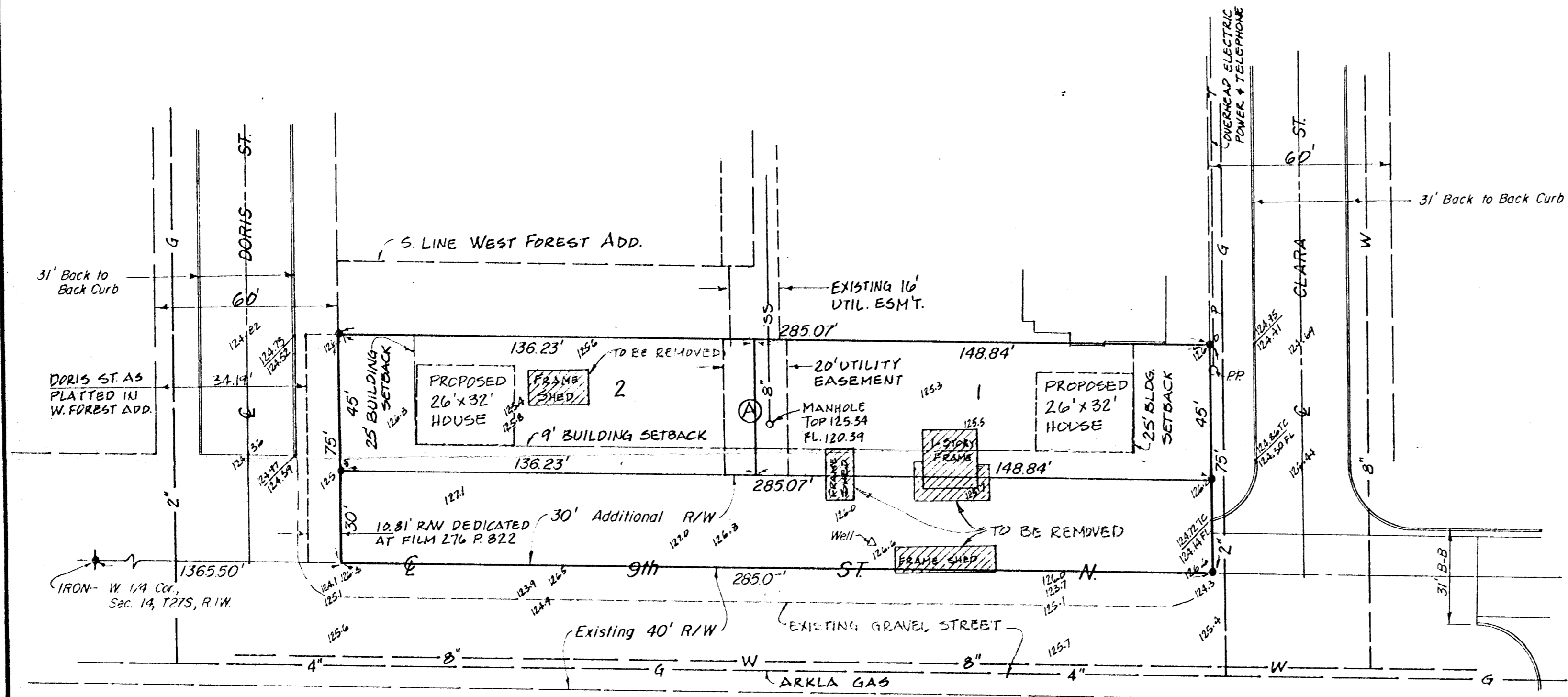
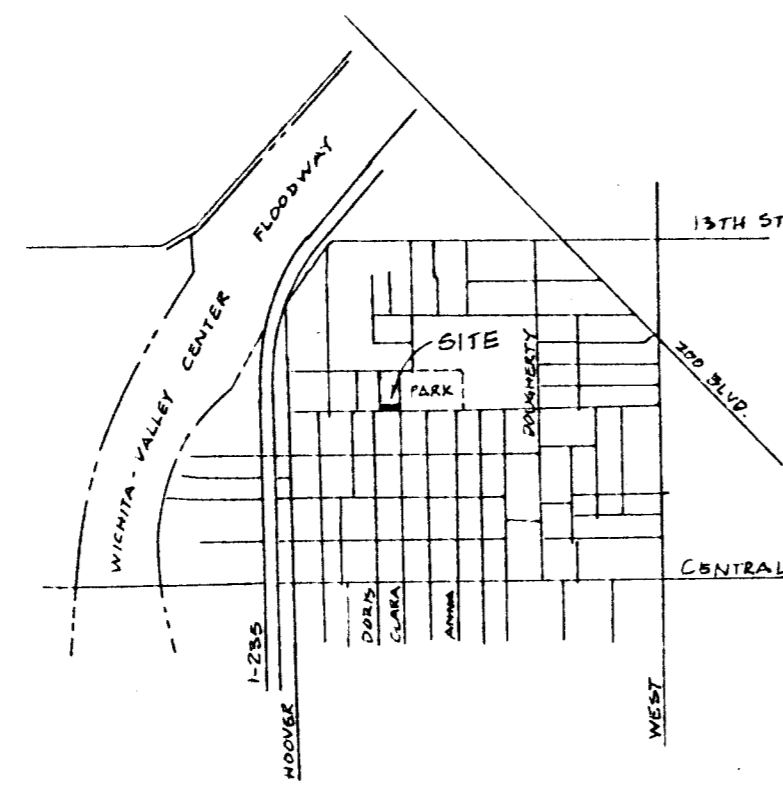


PRELIMINARY PLAT  
**WEST FOREST SECOND ADDITION**  
 TO WICHITA, SEDGWICK COUNTY, KANSAS



**LEGAL DESCRIPTION:**  
 The South 75 feet of the East 4.5  
 Acres of Lot 25, R.A. Morris Tracts,  
 Wichita, Sedgwick County, Kansas.



VICINITY MAP

**BENCH MARK**

City Disc 33' West & 42' South of  
 & Anna & 9th Street, Elev. 124.64  
 R.R. Spike in power pole at N.E.  
 corner of site, Elev. 126.62  
 All elevations to City Datum

**MOEHRING & ASSOCIATES**  
 CONSULTING ENGINEERS  
 WICHITA

81-138-SD      December 1981