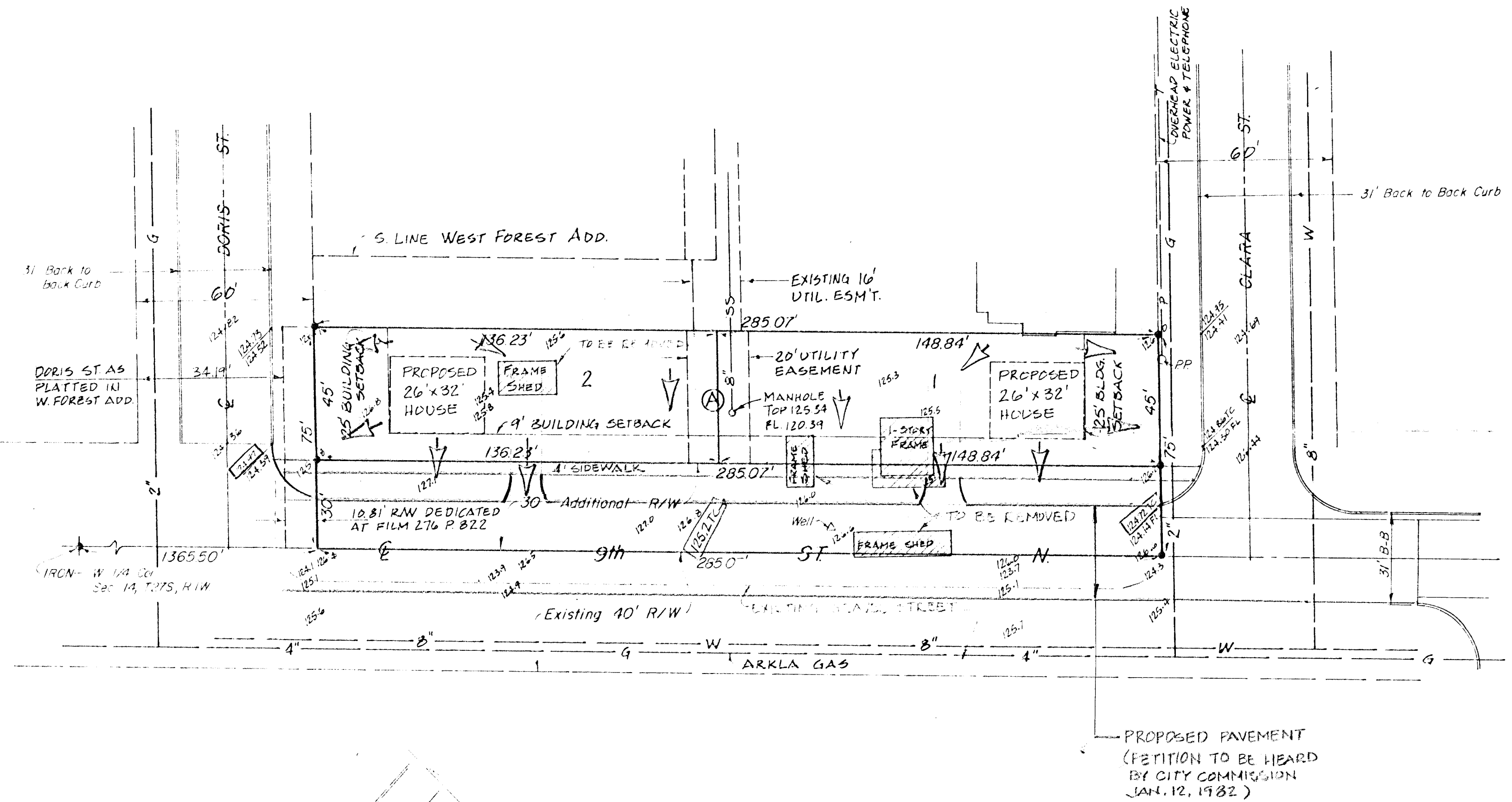
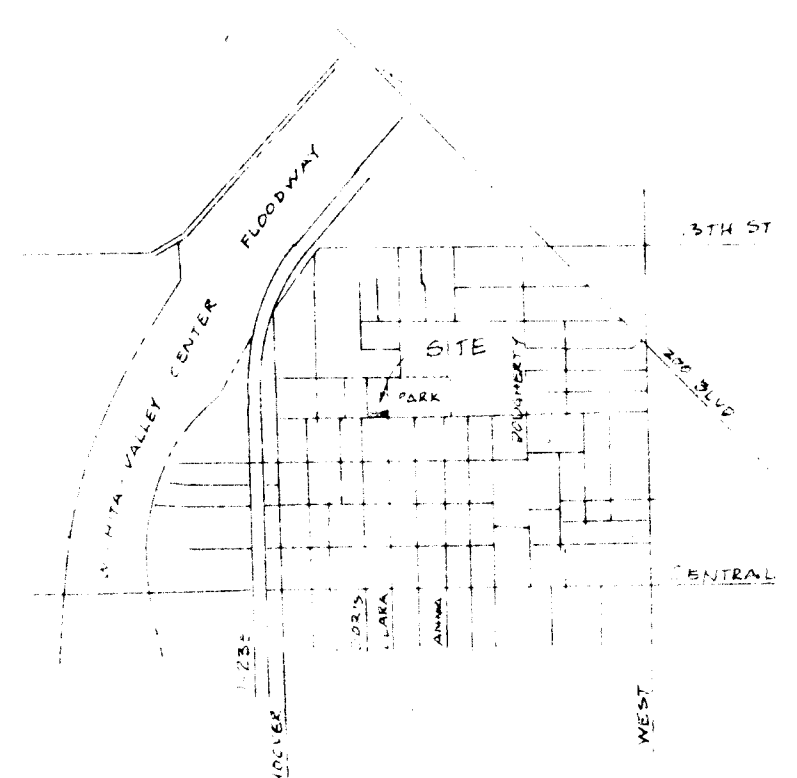


PRELIMINARY PLAT
 WEST FOREST SECOND ADDITION
 TO WICHITA, SEDGWICK COUNTY, KANSAS



LEGAL DESCRIPTION:
 The South 75 feet of the East 4.5
 Acres of Lot 25, R.A. Morris Tracts,
 Wichita, Sedgwick County, Kansas.



VICINITY MAP

BENCH MARK
 City Disc 33' West & 42' South of
 E. Anna & 9th Street, Elev. 124.64
 R.R. Spike in power pole at N.E.
 corner of site, Elev. 126.62
 All elevations to City Datum

MOEHRING & ASSOCIATES
 CONSULTING ENGINEERS
 WICHITA

81-138-SD December 1981

LOT GRADING PLAN
 1-6-82
 TCR