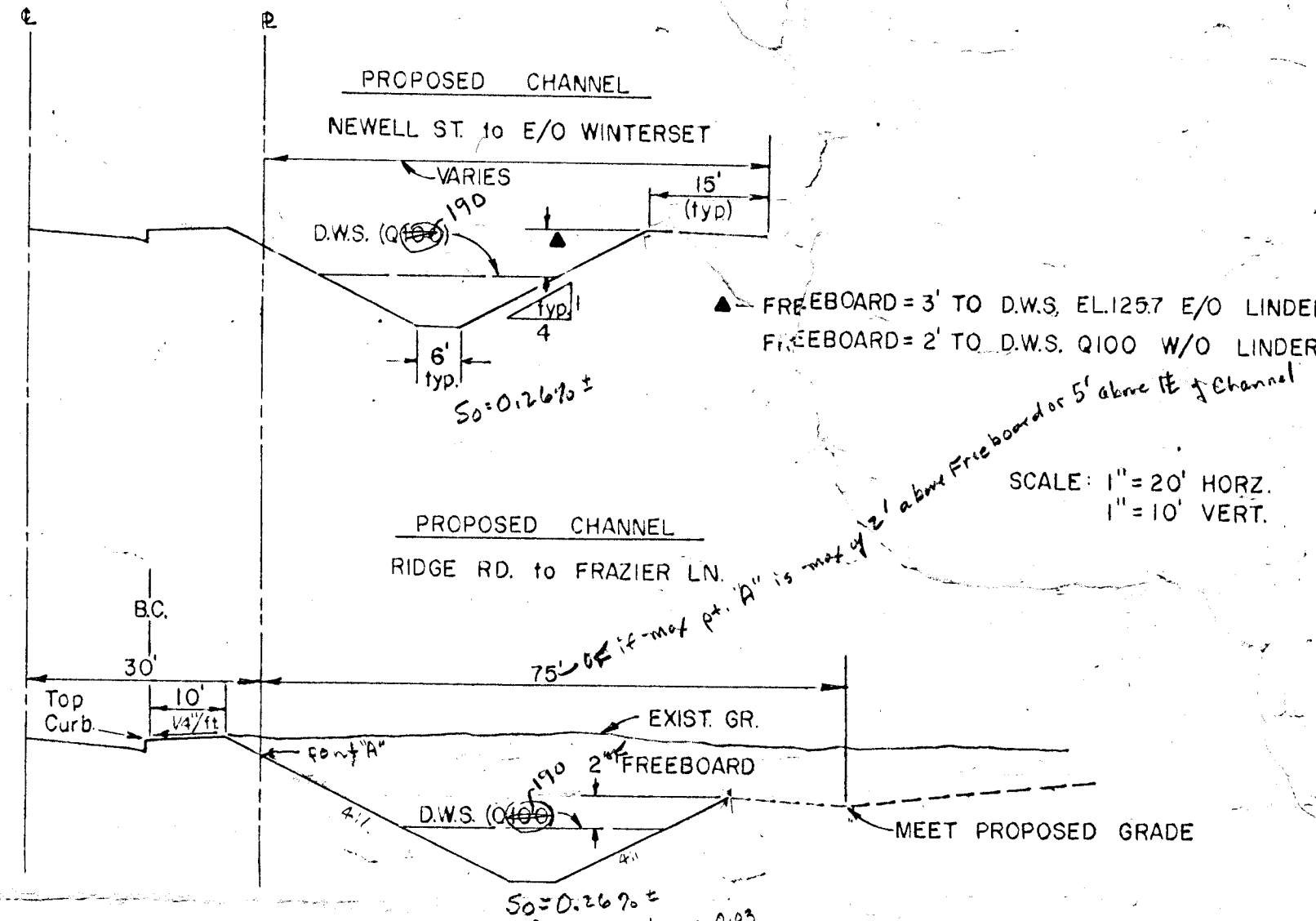
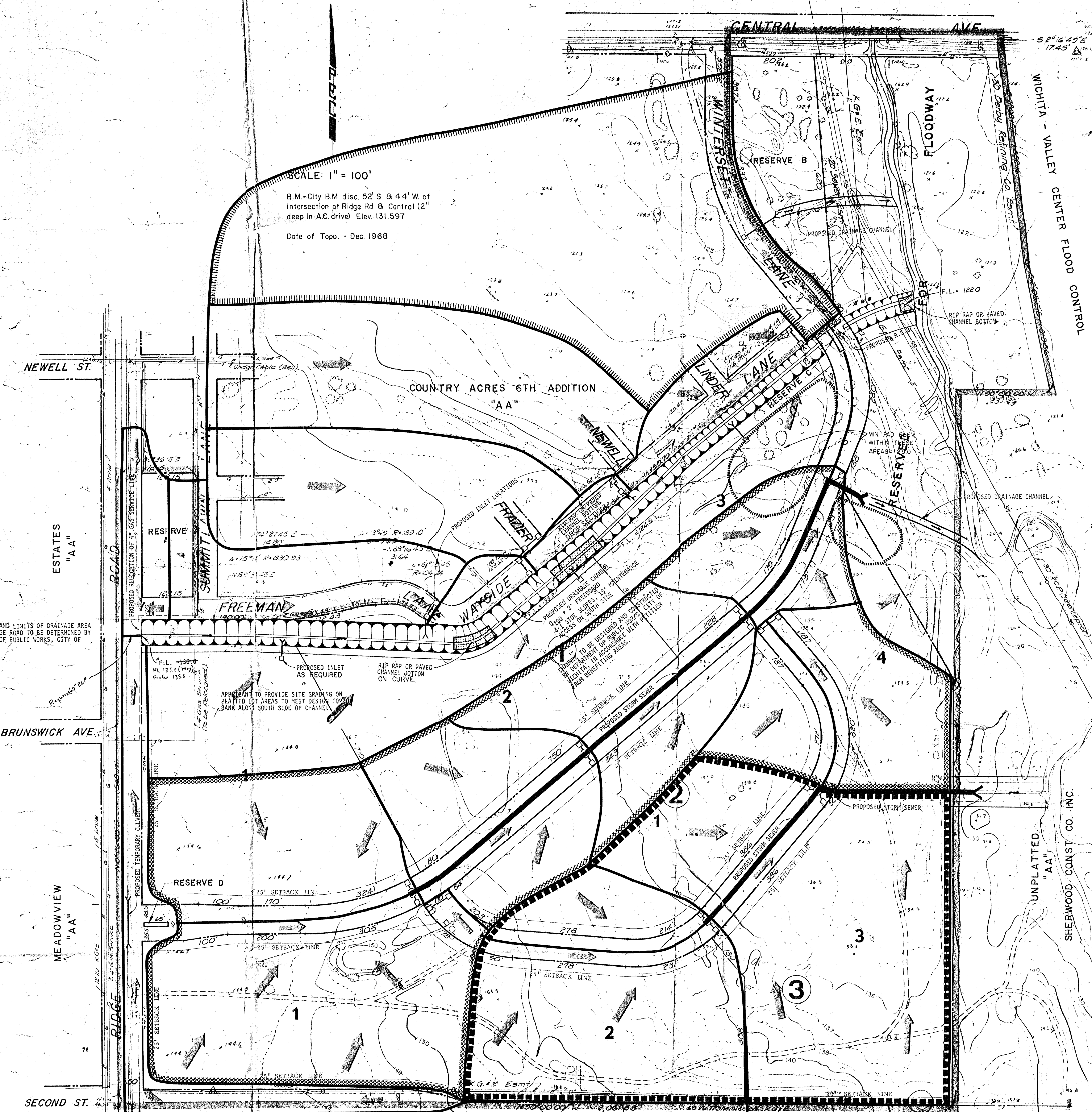


SCALE: 1" = 100'

B.M. - City B.M. disc. 52' S. & 44' W. of intersection of Ridge Rd. & Central (2" deep in A.C. drive) Elev. 131.597

Date of Topo. - Dec. 1968



CHANNEL CROSS SECTIONS

$$Q = K \frac{b^{2.48} S^{.845}}{n}$$

$$K = \frac{1.49 R^{.748}}{n} = \frac{1.49 (1.17)^{.748}}{.015} = 0.9333$$

$$D = 0.49 \quad D = 2.74'$$

$$V = \frac{1.49}{(1.49)^{.748} (.015)^{.845}} = 3.45 \text{ (ft)}$$

200' Need 20' + 20' + 20' (75' OK)

PROPOSED ELEVATIONS AND CHANNEL R/W WIDTHS DEVOTED BY * TO BE VERIFIED BY DEPARTMENT OF PUBLIC WORKS AS REQUIRED BY LIMITS OF DRAINAGE AREA WEST OF RIDGE ROAD.

DRAINAGE PLAN of FARMINGTON SQUARE

TOPOGRAPHY: BAUGHMAN & CO., DEC. 1968

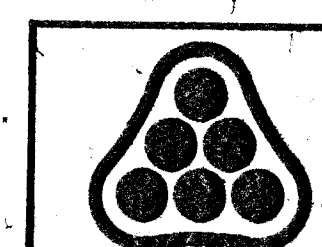
Engineer: P.E.C. 1440 E. English
Wichita, Kansas

UNPLATTED "AA" L.C. INVESTMENT INC.

PREPARED AS A PLATTING REQUIREMENT FOR FARMINGTON SQUARE S/D NO. 74-28

APPROVED
METROPOLITAN AREA PLANNING DEPT.
DATE 1974

APPROVED
WICHITA - SEDGWICK CO. FLOOD CONTROL DEPT.
DATE 1974



PROFESSIONAL ENGINEERING CONSULTANTS, P.A.
ENGINEERS
WICHITA, KANSAS