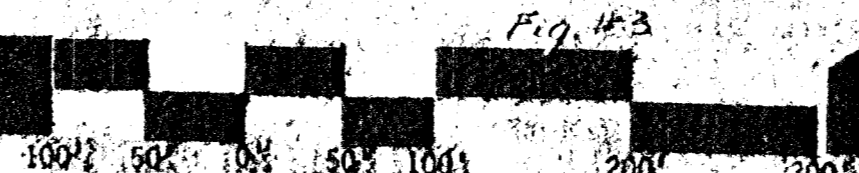
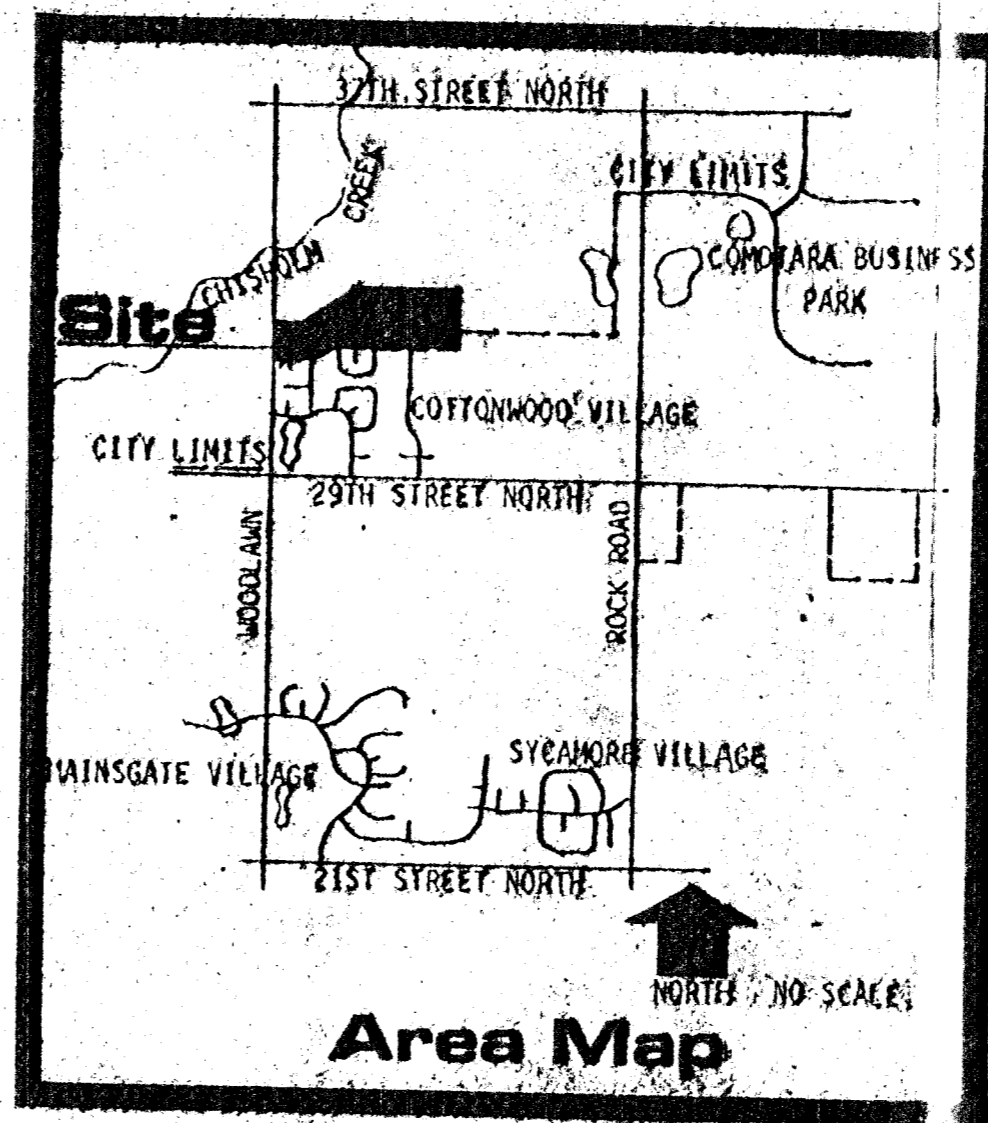
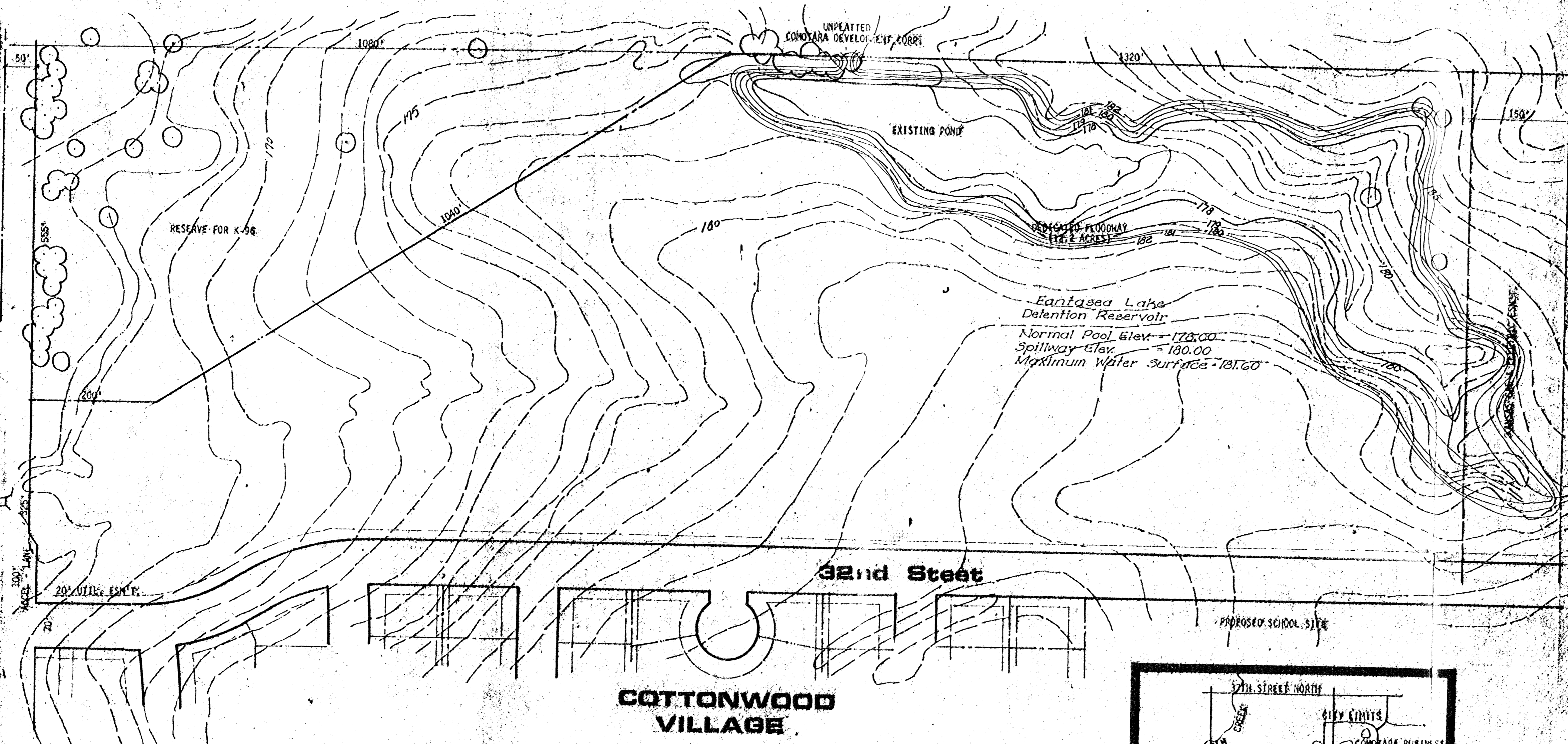


N.W. 1/4, 1/2, 1/4, S.W. 1/4
SEC. 36, T27N, R28E

WILLIAM NICHOLS
UNPLATTED

Woodlawn

EXISTING CURB
100' LANE
20' WALKWAY



OWNER: WICHITA DEVELOPMENT CORPORATION
2225 HATHAWAY CIRCLE, WICHITA, KANSAS 67226

ENGINEERS: VAN DOREN-HAZARD-STALLINGS
850 ROCKBOROUGH BUILDING
860 N. ROCK ROAD, WICHITA, KANSAS 67208
PHONE: 688-2303

FIG. 1A-3
SURVEY PREPARED FROM SURVEYS BY CITY-COUNTY FLOOD CONTROL DISTRICT, WICHITA, 1955 AND BY ADDITIONAL SURVEYS BY VAN DOREN-HAZARD-STALLINGS, ENGINEERS, 1972-1973

1" CONTOUR INTERVAL CITY OF WICHITA, KANSAS

9

BILL G. YONG DE

DATE

SHEET NO.

PROJECT

OF