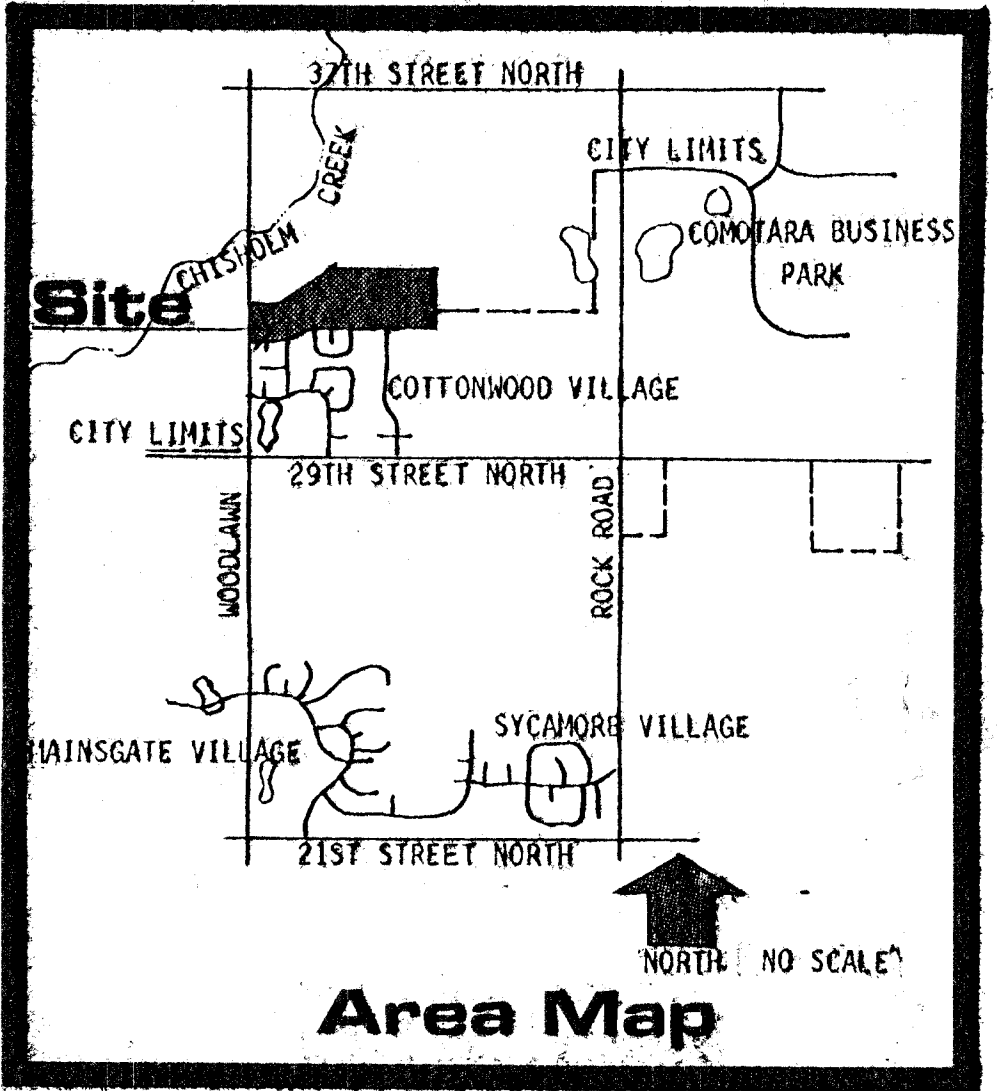
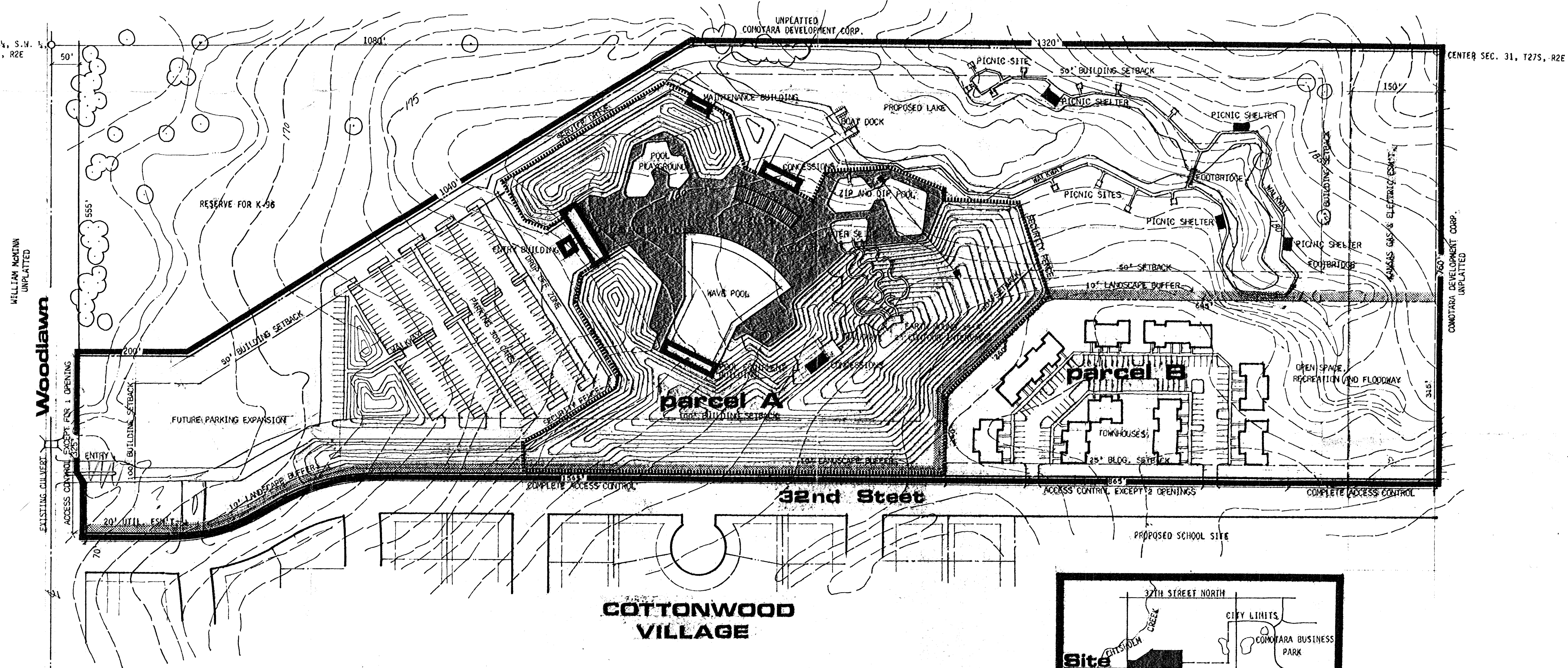


N.W. 1/4, N.W. 1/4, S.W. 1/4,
SEC. 31, T27S, R2E



Community Unit Plan
FANTASEA

OWNER: WICHITA DEVELOPMENT CORPORATION
2225 HATHWAY CIRCLE, WICHITA, KANSAS 67226

ENGINEERS: VAN DOREN-HAZARD-STALLINGS
250 ROCKBOROUGH BUILDING
260 N. ROCK ROAD, WICHITA, KANSAS 67206
PHONE - 686-7303

DEVELOPER:
TRINITY ASSOCIATES INC.
300 W. DOUGLAS SUITE 42
WICHITA, KANSAS 67202
PHONE: 268-2897

100' 50' 0' 50' 100' 200' 300'

SURVEY PREPARED FROM SURVEYS BY CITY-COUNTY FLOOD CONTROL OFFICE, WICHITA, 1955,
AND BY ADDITIONAL SURVEYS BY VAN DOREN-HAZARD-STALLINGS, ENGINEERS, 1972-1973.

1' CONTOUR INTERVAL CITY OF WICHITA DATUM.



BILL G. YUNG DESIGN
316-264-0676
1565 NORTH WACO, WICHITA, KANSAS, 67203

date FEBRUARY 2, 1999
rev.

sheet title
COMMUNITY UNIT PLAN

project
FANTASEA

sheet
of