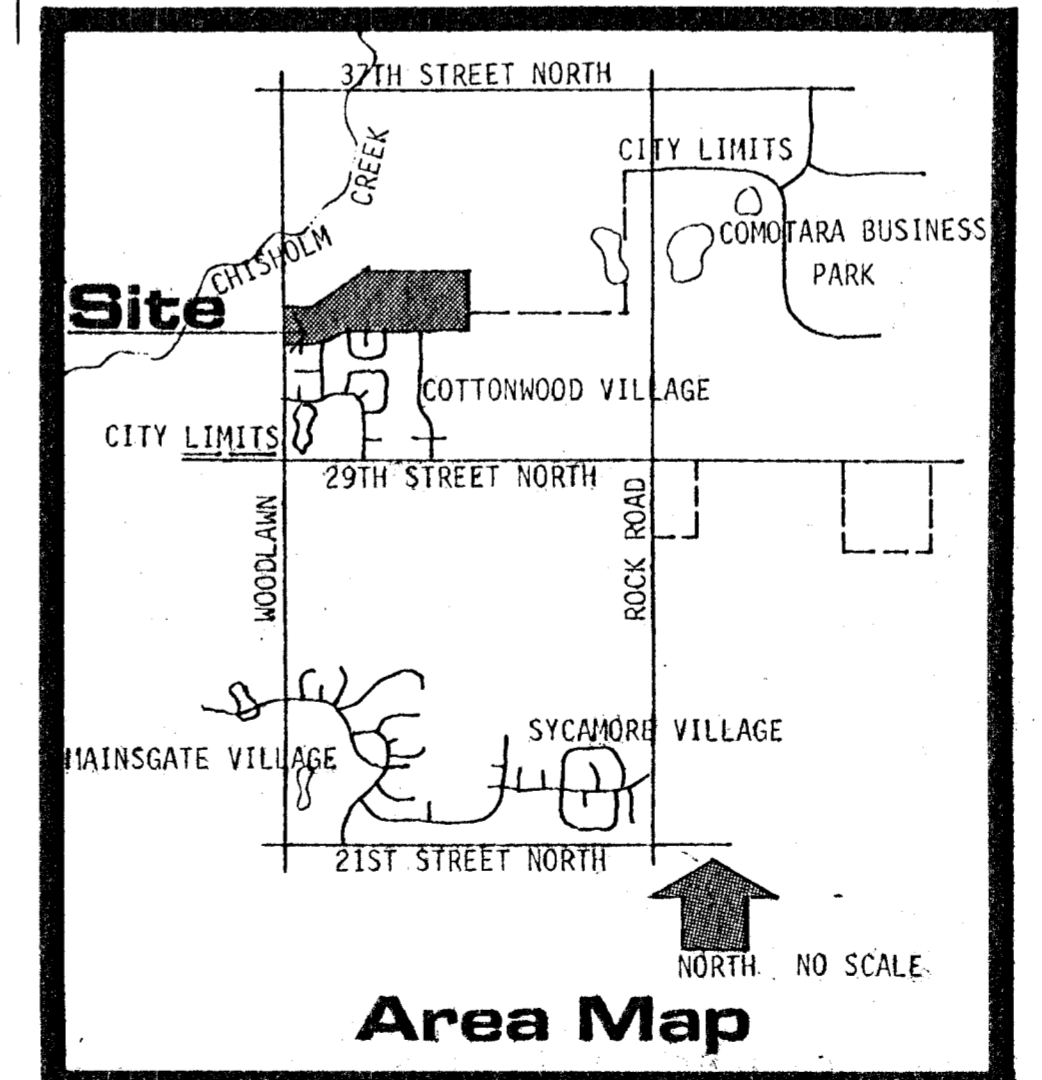
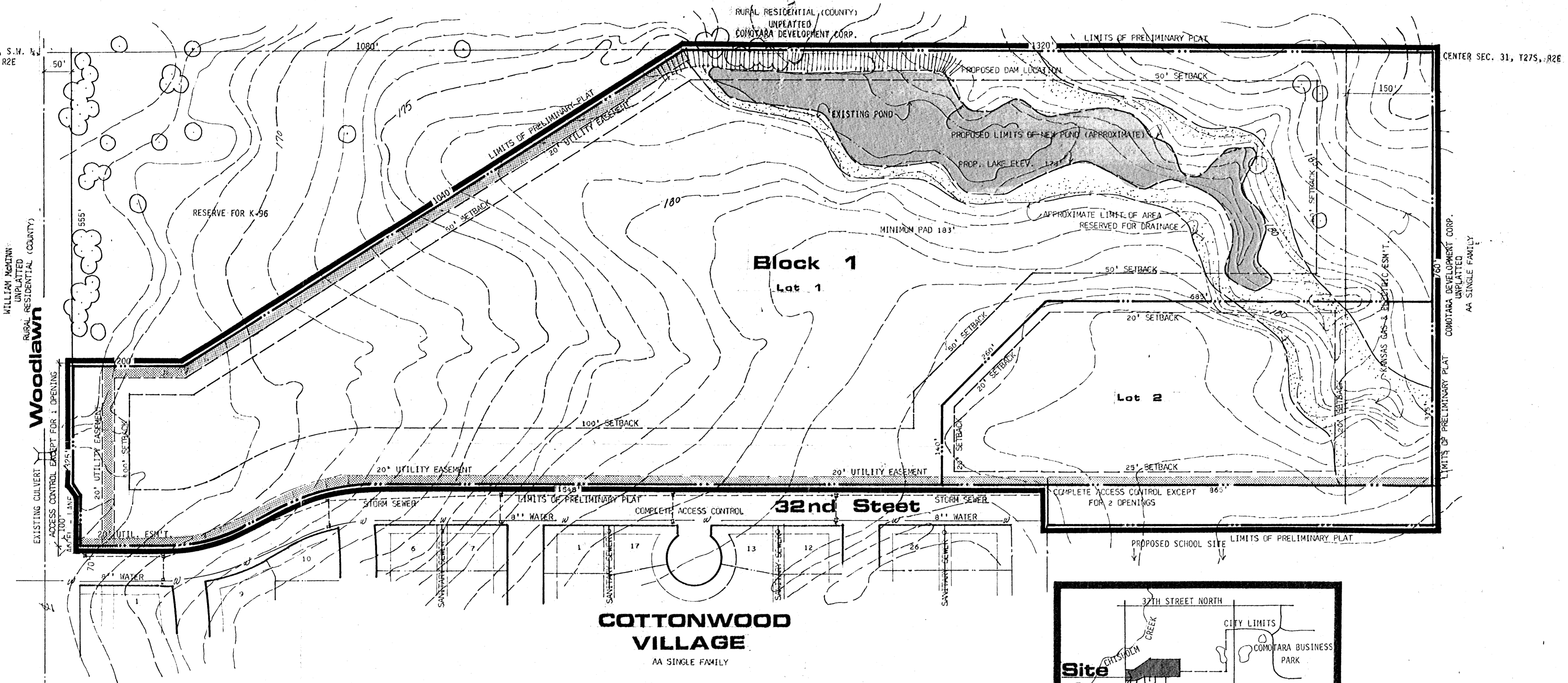


N.W. 1/4, N.W. 1/4, S.W. 1/4
SEC. 31, T27S, R2E



Preliminary Plat FANTASEA

OWNER: WICHITA DEVELOPMENT CORPORATION
2225 HATHWAY CIRCLE, WICHITA, KANSAS 67226

ENGINEERS: VAN DOREN-HAZARD-STALLINGS
250 ROCKBOROUGH BUILDING
260 N. ROCK ROAD, WICHITA, KANSAS 67202
PHONE - 686-7303

DEVELOPER: TRINITY ASSOCIATES INC.
300 W. DOUGLAS - SUITE 42
WICHITA, KANSAS 67202
PHONE 265-2957

100' 50' 0' 50' 100' 200' 300'

SURVEY PREPARED FROM SURVEYS BY CITY-COUNTY FLOOD CONTROL OFFICE, WICHITA, 1955,
AND BY ADDITIONAL SURVEYS BY VAN DOREN-HAZARD-STALLINGS, ENGINEERS, 1972-1973.

1" CONTOUR INTERVAL CITY OF WICHITA DATUM

9
BILL G. YUNG DESIGN
 1555 NORTH WALDO, WICHITA, KANSAS, 67203
 316-264-0676
 date: FEBRUARY, 1979
 rev.
 sheet title
 PRELIMINARY PLAT
 project
 FANTASEA
 sheet
 of