



# MEMO

TO: Michael Lindebak, P.E.  
City Engineer  
City Hall - 7th Floor  
455 N. Main  
Wichita, KS 67202

PROJECT NO. 36-83348-1120

PROJECT: Oak Cliff Estates

Replat

COPIES TO:

ATTN:

DATE: July 3, 1984

Larry Chambers

FROM: Dick Linn, P.E.

Jack Galbraith

REFERENCE: Blocks 7 & 8, Pavement and

Bill Yung

Right-of-way Widths

PLEASE ADVISE IMMEDIATELY OF ANY MISCONCEPTIONS OR OMISSIONS YOU BELIEVE TO BE CONTAINED HEREIN.

The Developer of the above referenced Blocks requests a variance in the pavement widths on Mars, Mesa, O'Neil, and Maribeau, from Mars to Mesa. These 4 streets will have lots abutting on one side only. The Developer desires to construct these 4 streets with 25' back to back width pavements. Lark Street and Maribeau, east of Mesa, are to be constructed 29' back to back, except for the divided entrance at Maize Road.

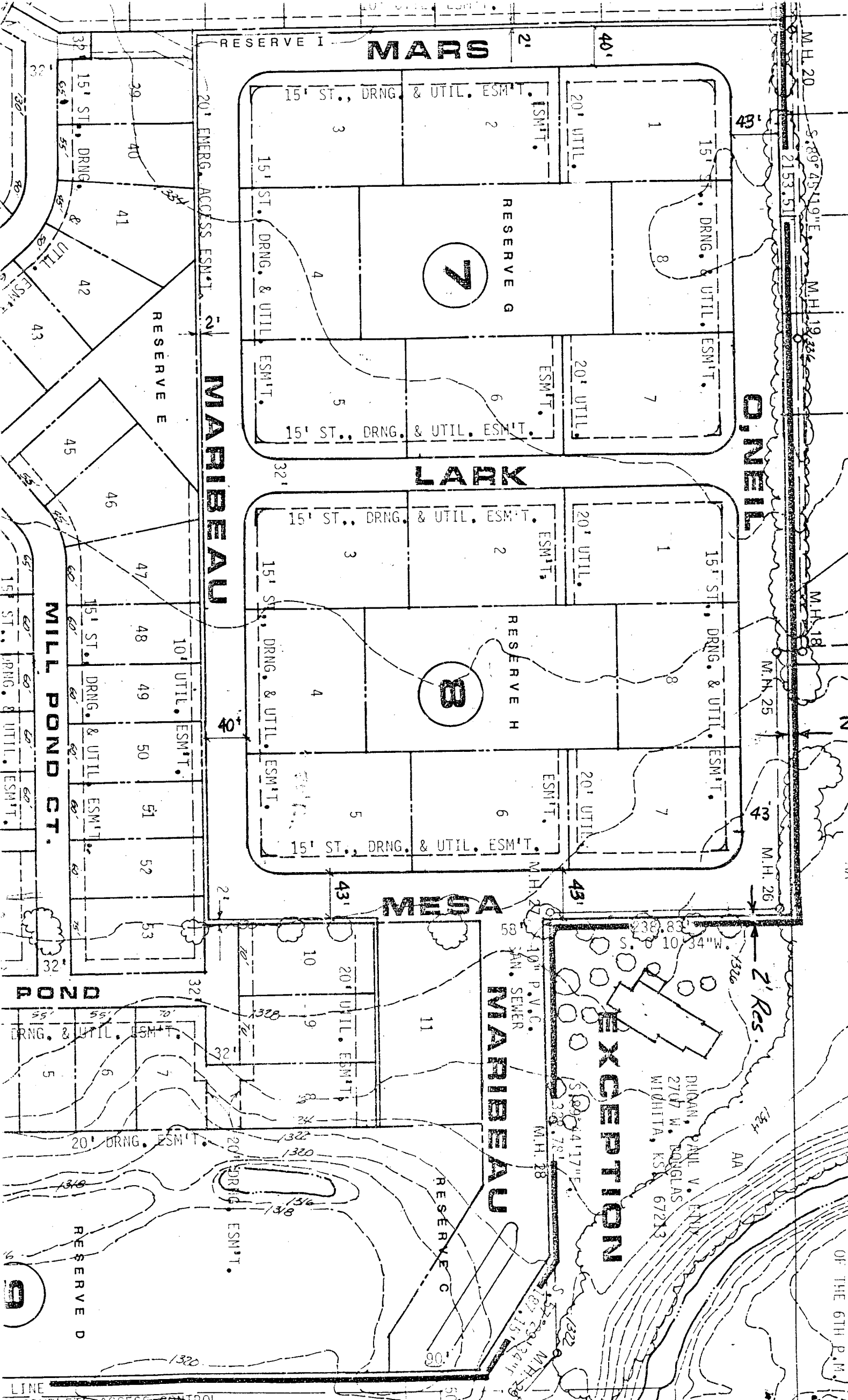
The 40' Right-of-way on Mars and Maribeau will provide for a 9.5' border between the 2' reserve and the back of curb and a 5.5' border between the lots and the back of curb.

The 43' Right-of-way on O'Neil and Mesa will provide for a 12.5' border between the 2' reserve and the back of curb and a 5.5' border between the lots and the back of curb. The 12.5' border is required to provide clearance from the existing sanitary sewer.

This portion of the replat (Blocks 7 and 8) substantially conforms to the portion of the Subdivision Regulations which permits the 50' street Right-of-way and 21' width roadway. The Developer desires to increase the roadway width on the afore-mentioned streets to 25'.

Please contact me if additional information is desired.

→ DLM



**MARS**

**O'NEIL**

**LARK**

**MESA**

**MARIBEAU**

**MILL POND CT.**

**EXCEPTION**

**MARIBEAU**

**POND**

LINE COMPLETE ACCESS CONTROL

OF THE 6TH P.M.