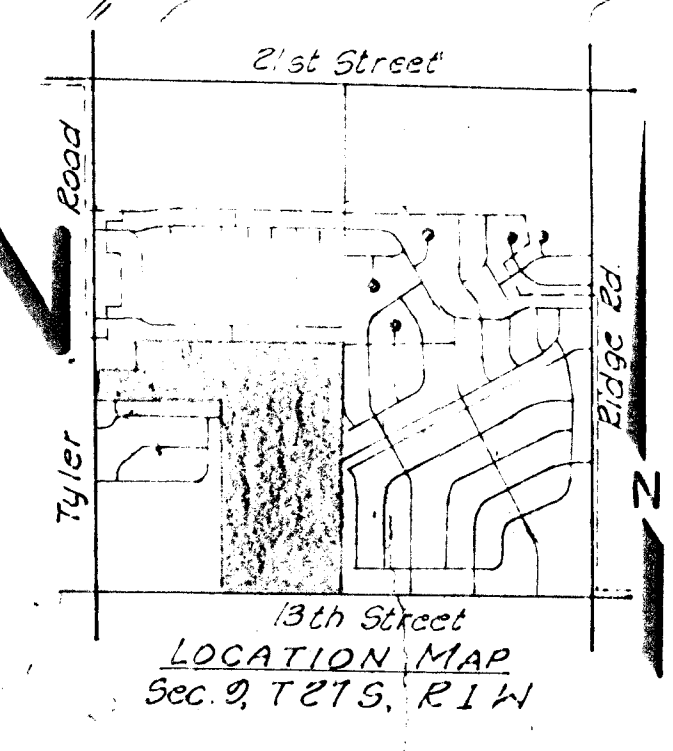


PRELIMINARY PLAT September 20, 1981
NORTHWEST VILLAGE 4TH ADDITION

Owner: Wesley Medical Endowment Foundation
 580 N. Hillside
 Wichita, Kansas 67214
 Engineer: Professional Engineering Consultants, P.A.
 1110 E. English
 Wichita, Kansas 67211

TOPOGRAPHIC MAP OF LANDS LOCATED AT
 THE S.W. 1/4 OF SECTION 9,
 T-27-S R-1-W, SEDGWICK COUNTY, KANSAS



31.172.48 City, 51d. Disc. @ Tyler's 17th.
 367E. 3113. & 20th. City Datum
 135288 (1952)

