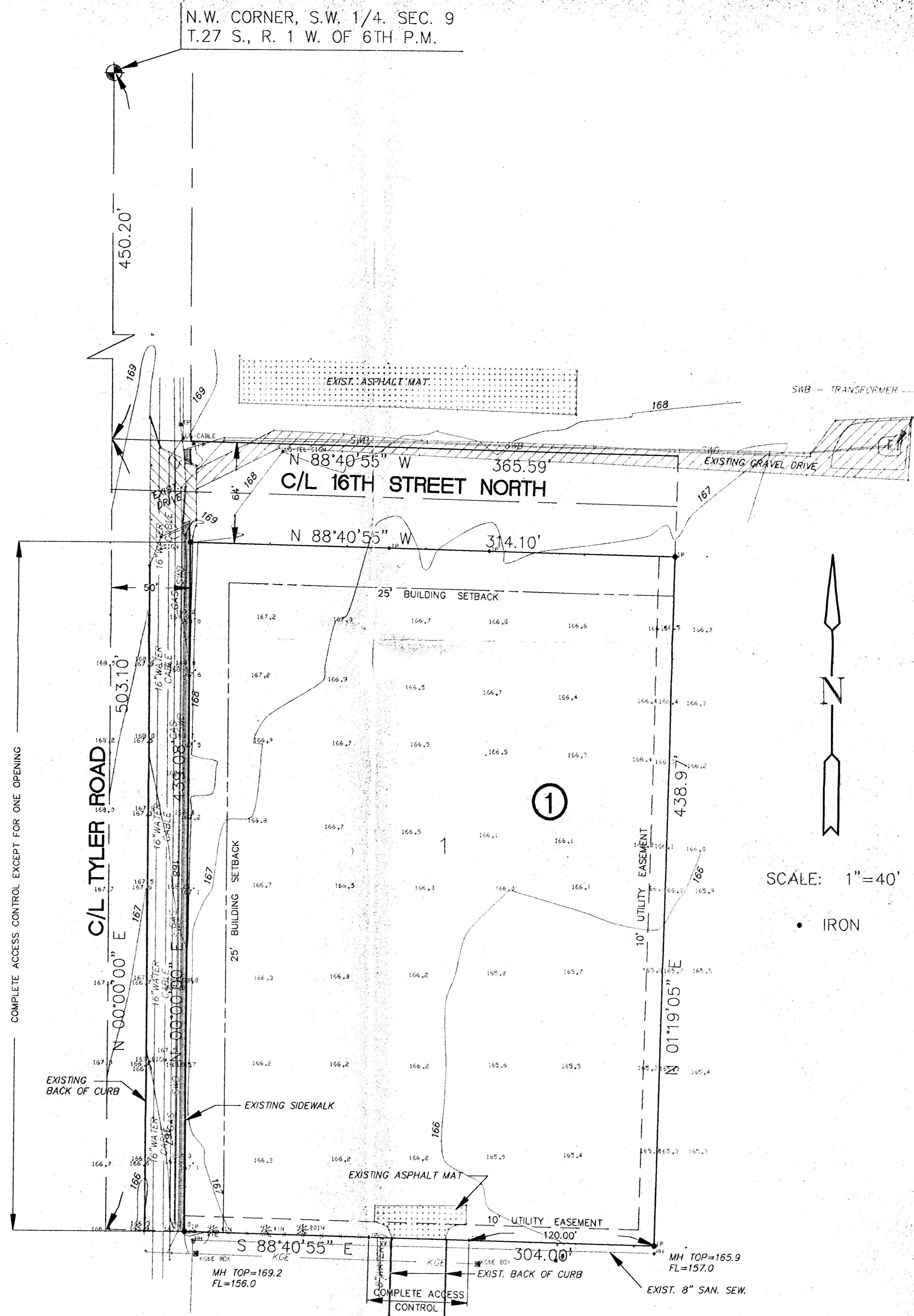


N.W. CORNER, S.W. 1/4, SEC. 9
T.27 S., R. 1 W. OF 6TH P.M.



Contractor will be required to provide a minimum advance notice of Forty-Eight (48) hours to utility companies prior to starting any excavation as follows:

Kansas One-Call
1-800-344-7233
or 687-2470 (Local Wichita)

The Contractor must notify the following in case of an emergency:

Southwestern Bell Telephone Company 1-571-2115
Cablevision 262-4270 or 263-2061
KPL Gas Service Company 263-7511
Kansas Gas & Electric 264-1141
City of Wichita Water Department 268-4908
City of Wichita Sewer Maintenance 268-4908
ARKLA GAS COMPANY 942-8350 OR 263-8161

SCALE: 1" = 40'

• IRON

51.921
51.1
6.221

REVISED: 9-16-91



**FIRE STATION 16
TOPOGRAPHY**

MID-KANSAS ENGINEERING CONSULTANTS PA
3500 N. ROCK ROAD #800
WICHITA, KANSAS 67226 PH. 636-5566

Design
Drawn by
Checked by
Date
Job no.
Sheet
of