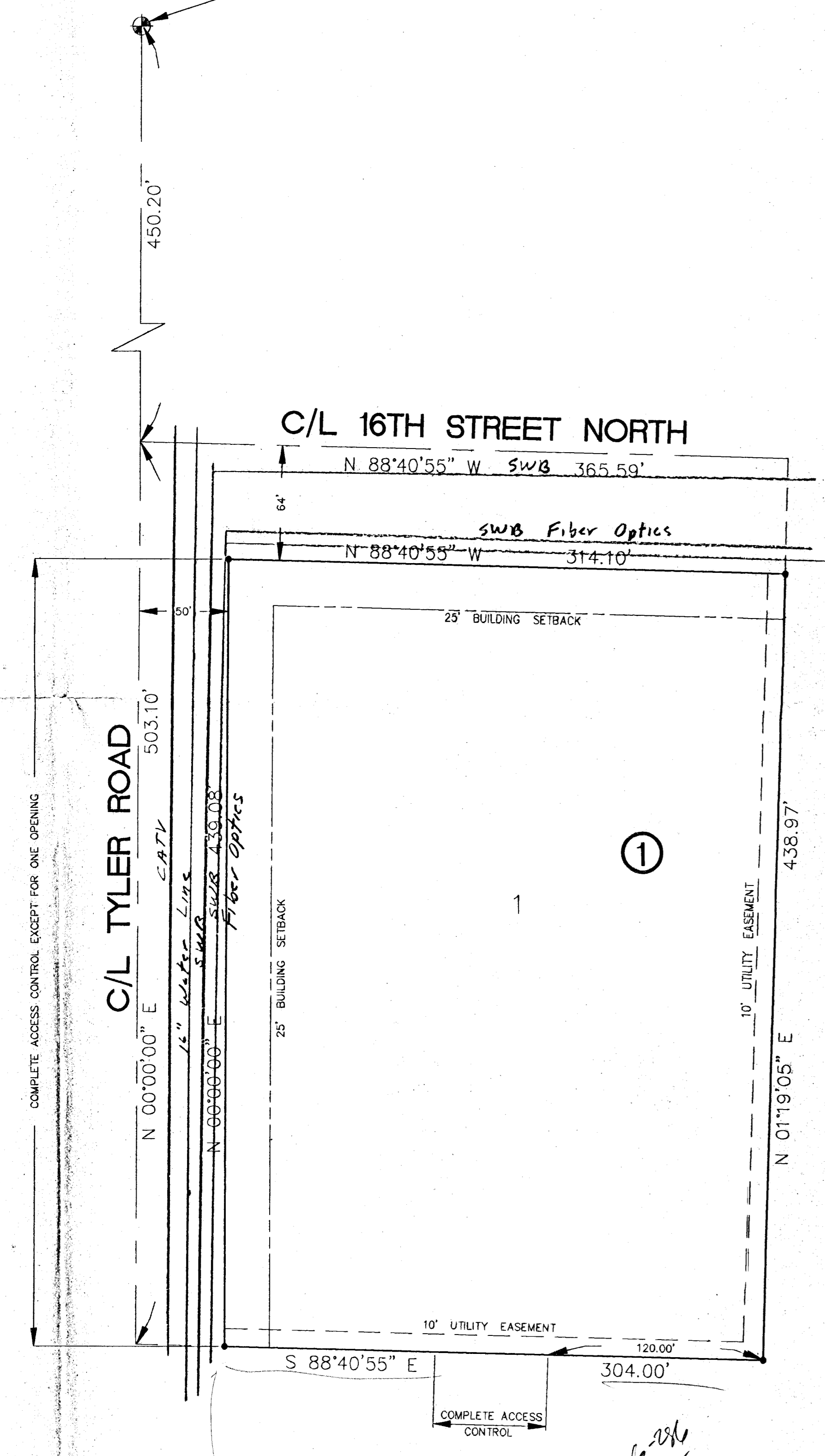


SKETCH PLAT

ORIGINAL PLAT OF FIRE STATION 16

AN ADDITION TO WICHITA, SEDGWICK COUNTY, KANSAS

N.W. CORNER, S.W. 1/4. SEC. 9
T.27 S., R. 1 W. OF 6TH P.M.



I, Kenneth H. Bengtson, a Civil Engineer and Registered Land Surveyor in Kansas, do hereby certify that I have been in responsible charge of surveying and platting of FIRE STATION 16, an addition to Wichita, Sedgwick County, Kansas, into a lot and a block the same being accurately set fourth in the accompanying plat and described herein.

A replat of NORTHWEST VILLAGE 4TH ADDITION, an addition to, Sedgwick County, Kansas.

All lots, blocks, streets, easements and building setbacks located within the above described property are being vacated and replatted by virtue of K.S.A. 12-512(b).

I hereby certify that the details of this plat are correct to the best of my knowledge and belief this day of _____, 1991.

Kenneth H. Bengtson, P.E., R.L.S. #922
Mid-Kansas Engineering Consultants, P.A.
3500 N. Rock Road, Building #800
Wichita, KS

Know all men by these presents that we the undersigned property owners of the land as above set fourth in the Civil Engineer's and Registered Land Surveyor's Certificate, have caused the same to be surveyed and platted into a lot and a block the same to be known as "FIRE STATION 16", an addition to Wichita, Sedgwick County, Kansas. Easements for the construction and maintenance of public utilities as indicated on the accompanying plat, are hereby granted. All abutters rights of access to and from Tyler Road over and across the West line of FIRE STATION 16, are hereby granted to the City of Wichita, Kansas, provide however Lot 1, shall have access to Tyler Road at one location, as determined by the City Engineer.

CITY OF WICHITA

BY: Bob Knight, Mayor

STATE OF KANSAS)
) ss.
SEDGWICK COUNTY)

BE IT REMEMBERED, that on this _____ day of _____, 1991, before me the undersigned, a Notary Public in and for the County and State aforesaid, came Bob Knight, Mayor of the City of Wichita, personally known to me to be the same person who executed the foregoing instrument of writing and duly acknowledged the execution of the same.

IN WITNESS WHEREOF, I have hereunto set my hand and affixed my official seal, the day and year last above written.

Notary Public
My appointment expires: _____

This plat of FIRE STATION 16 has been submitted to and approved by the Wichita-Sedgwick County Metropolitan Area Planning Commission, Wichita, Kansas.

Dated this _____ day of _____, 1991.

WICHITA-SEDGWICK COUNTY METROPOLITAN AREA PLANNING COMMISSION

George Sherman, CHAIRMAN

Marvin S. Krou, SECRETARY

This plat approved and all dedications shown hereon, if any, accepted by the City Council of the City of Wichita, Kansas, this _____ day of _____, 1991.

Bob Knight, MAYOR

Pat Burnett, DEPUTY CITY CLERK

Enter on transfer record this _____ day of _____, 1991.

Don Wright, COUNTY CLERK

STATE OF KANSAS)
) ss.
SEDGWICK COUNTY)

This is to certify that this instrument was filed for record in the Register of Deeds office this _____ day of _____, 1991.

Pat Kettler, REGISTER OF DEEDS

Ed Hess, DEPUTY