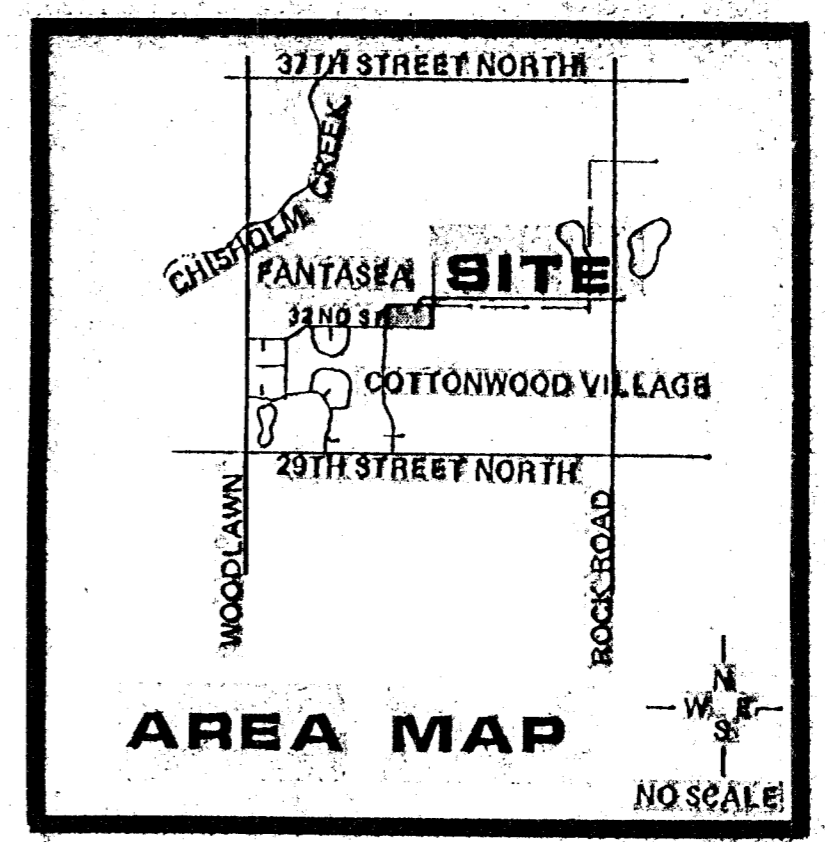
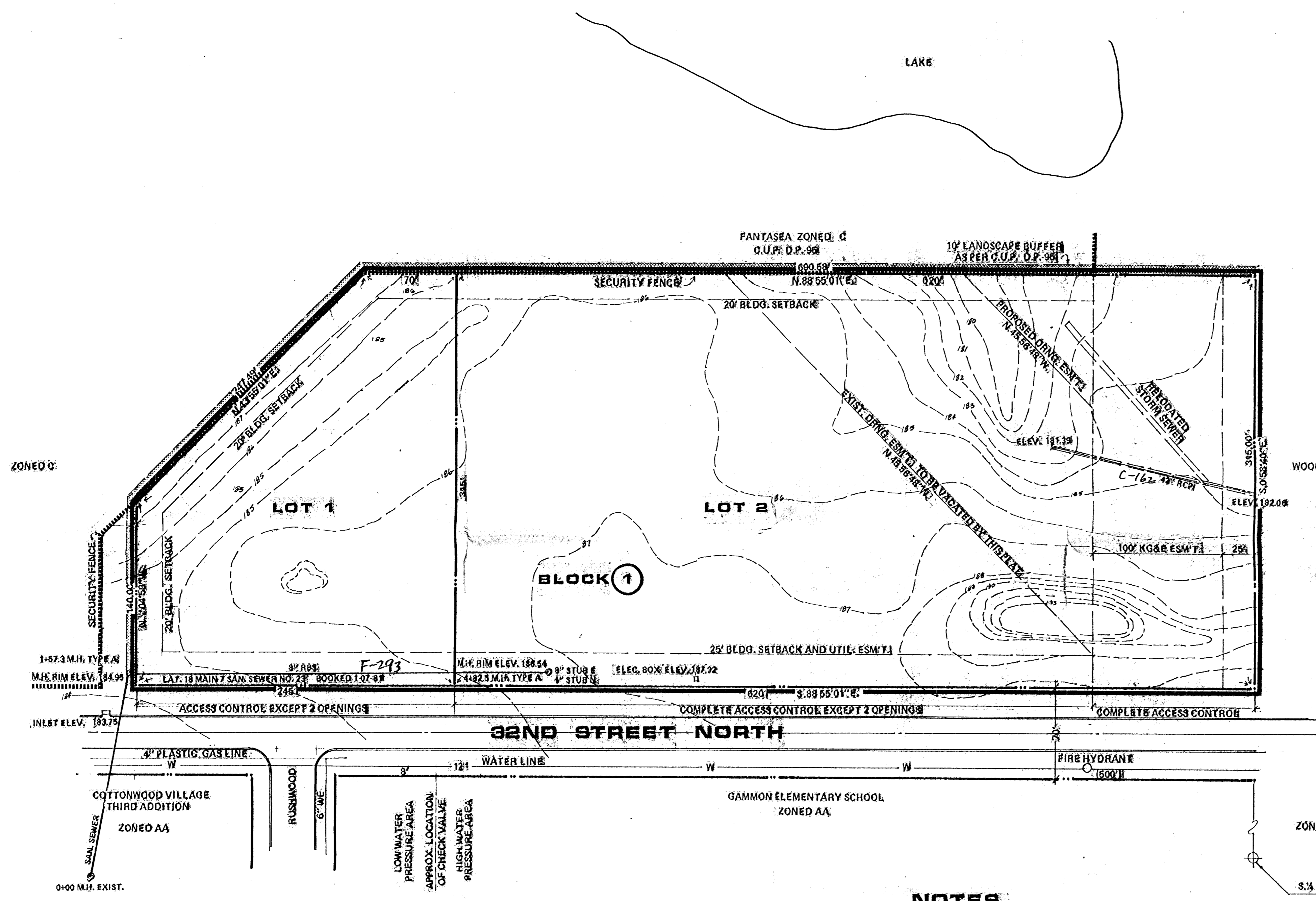


**BILL G. YUNG DESIGN**  
4912 E. 28TH STREET NORTH, WICHITA, KS 67220  
316-683-6607

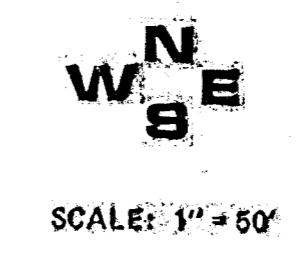
date JULY 17, 2006  
rev.

sheet title  
PRELIMINARY REPLAT

sheet project  
FANTASEA II  
of



**NOTES**  
 TOPOGRAPHY WAS PREPARED BY M.K.E.C. 16 JULY 1998  
 1' CONTOUR INTERVAL  
 MIN. PAD ELEV. 182  
 A DRAINAGE CONCEPT PLAN TO BE SUBMITTED TO CITY ENGINEER BY M.K.E.C.  
 BENCH MARK: □ CUT ON TOP OF NORTH CURB  
 32ND ST. 12 EAST 12 EAST OF A SECTION LINE  
 ELEV. 188.92



PRELIMINARY PLAT (A REPLAT OF FANTASEA)  
**FANTASEA II**

OWNER: LANDMARK COMMUNITIES, INC., 3600 N. ROCK ROAD | NO. 100, WICHITA, KS 67220