

PRELIMINARY PLAT  
**FIRST ASSEMBLY  
 OF GOD  
 ADDITION**  
 WICHITA, SEDGWICK COUNTY, KANSAS

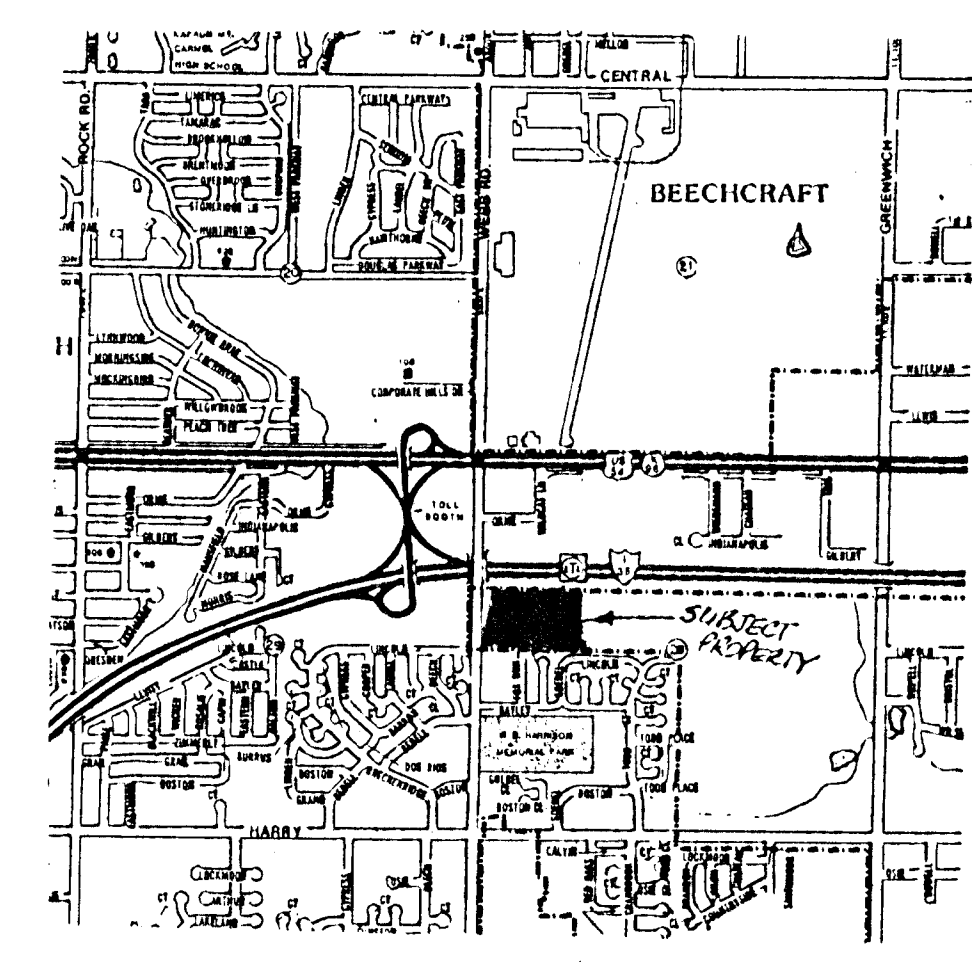
Part of the SW1/4 of the NW1/4 of Sec. 28, Twp. 27-S, R-2-E  
 of the 8th P.M., Sedgwick County, Kansas.

FIRST ASSEMBLY OF GOD  
 Dean McCormick, Pastor  
 1144 S. Main  
 Wichita, KS 67213  
 Ph. 263-8847



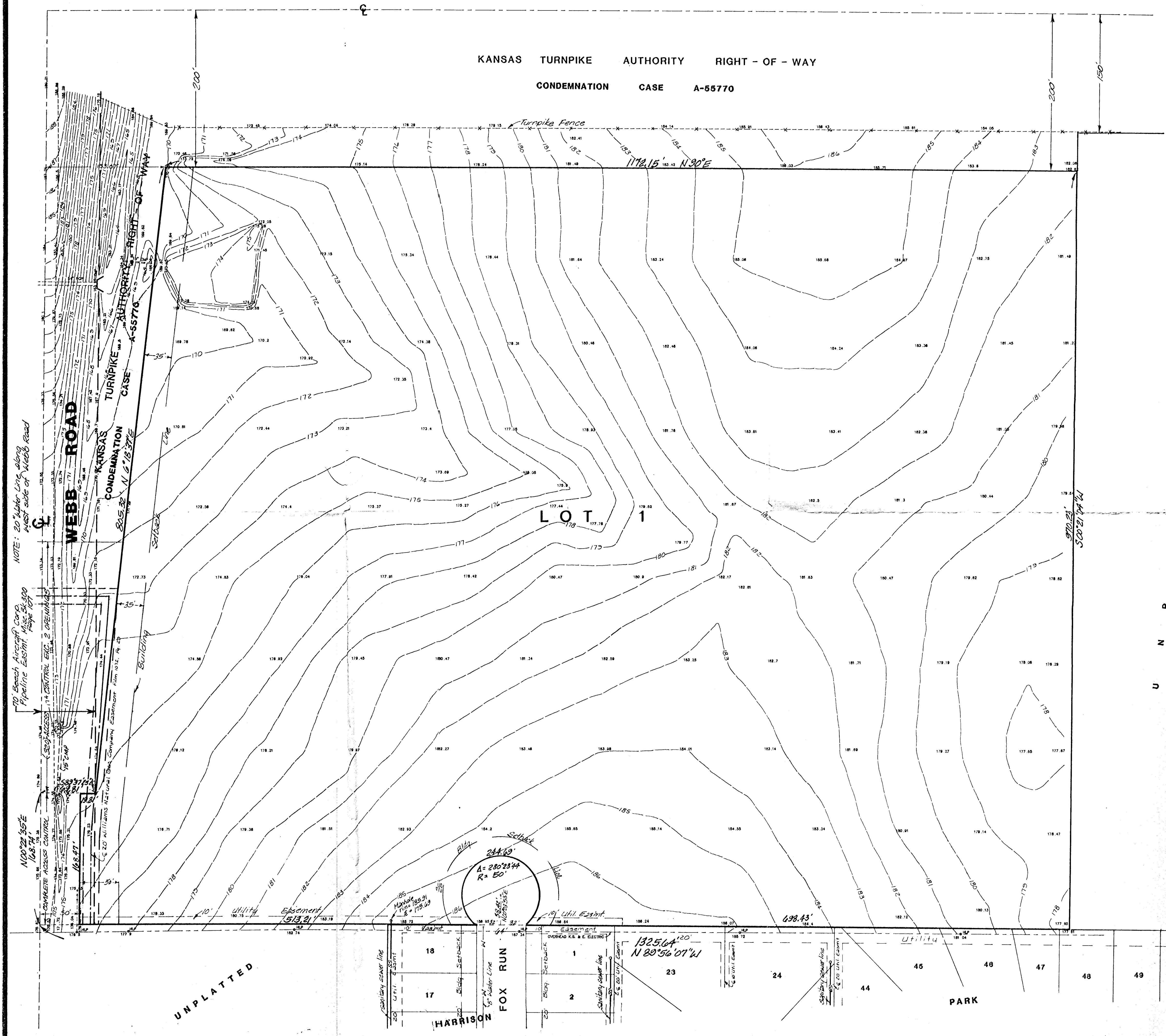
1" = 60'  
 Elev. = City Datum  
 Topo = Aug. 7, 1990

BENCH MARK:  
 Plus cut on top of curb, south side  
 of Lincoln; West side of Webb Rd.  
 Elevation = 175.43 City Datum



Vicinity Plat

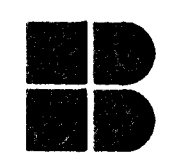
U N P L A T T E D



NOTE: 20' Water Line along West side of Webb Road

10 Beach Aircraft Corp. Pipeline East of Webb Rd. Page 101

100'± 55° E 168.74'



BAUGHMAN COMPANY P. A.  
 SURVEYING & ENGINEERING  
 316/282-7271 • 315 ELLIS • WICHITA, KANSAS 67211

JUL 7, 1991