

AREA MAP OF

LESLIE ADDITION

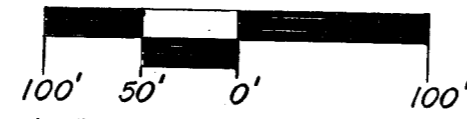
Owner: K.T. Wiedemann Trust

Contract Purchaser:

W.G.T. Associates c/o Robert Kaplan
430 N. Market Wichita, Ks. 67202

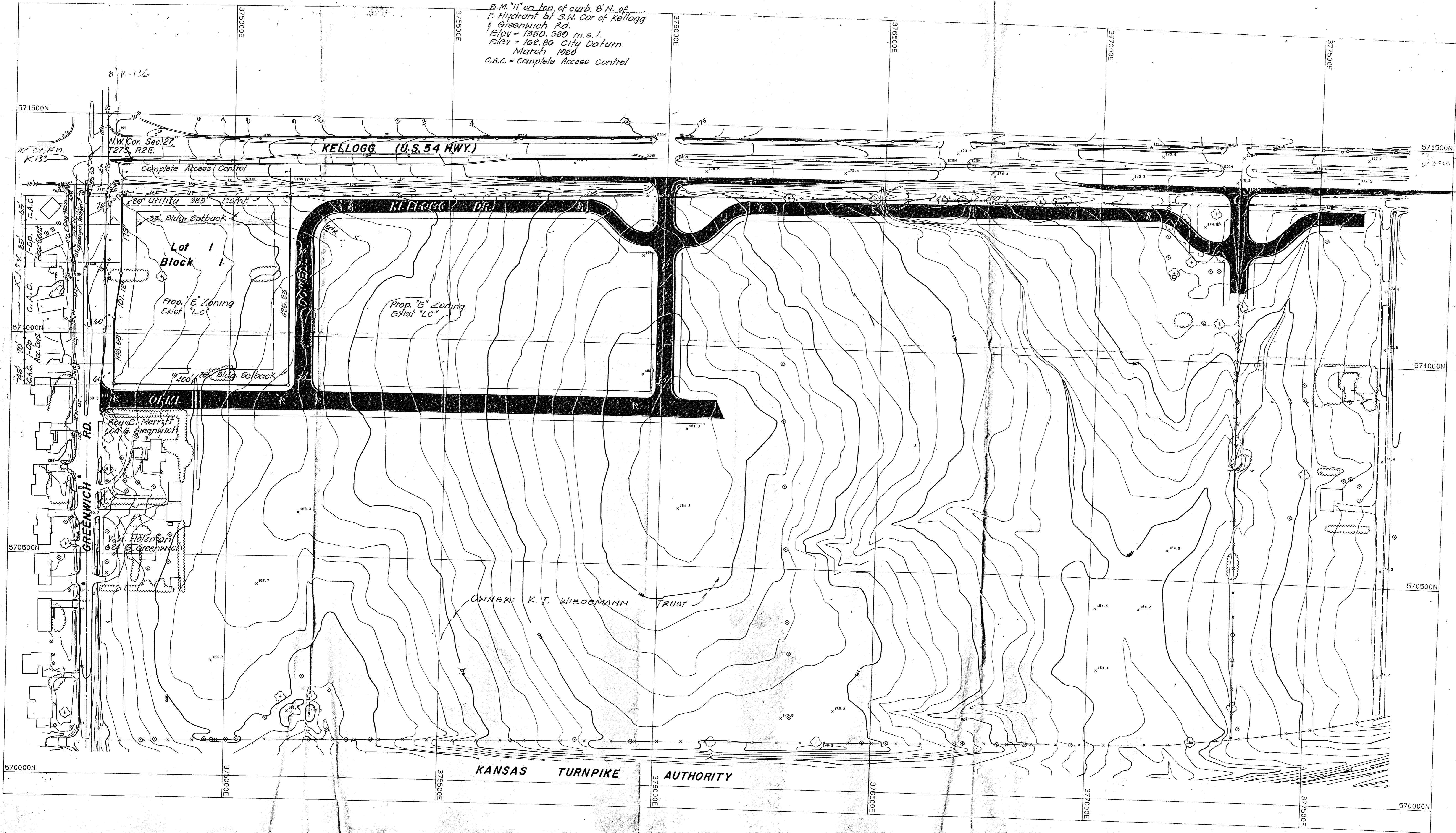
Engineer:

Professional Engineering Consultants p.a.
1440 English Wichita, Ks. 67211



B.M. "11" on top of curb, S.N. of
F. Hydrant at S.W. Cor. of Kellogg
& Greenwich Rd.
Elev = 1350.500 m.s.l.
Elev = 102.80 City Datum.
March 1988
C.A.C. = Complete Access Control

K&G site



DATE: 10-1-88