

CRYSTAL GARDENS ADDITION

DRAINAGE PLAN

WICHITA, SEDGWICK COUNTY, KANSAS

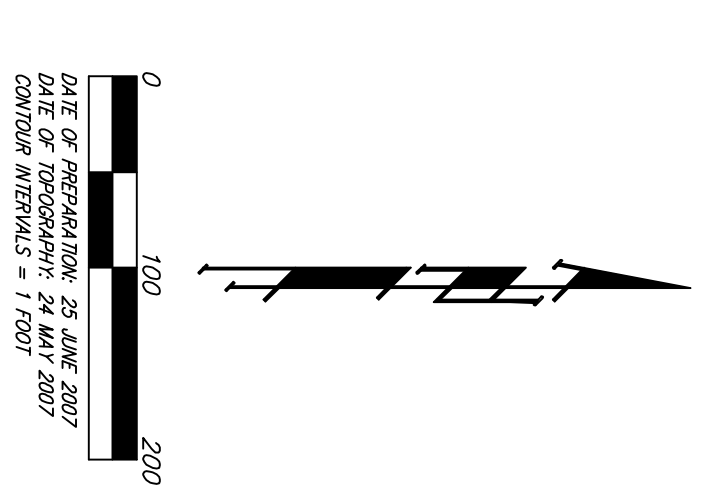
STAGE	INFLOW	OUTFLOW	ELEVATION
5 yr	28 cfs	1.7 cfs	1343.6
10 yr	29 cfs	2.0 cfs	1343.7
100 yr	41 cfs	2.3 cfs	1343.9

ELEVATION	AREA (acres)
1343	0.6
1344	0.7
1345	0.8

15" RCP or Equivalent Weir

NOTE: Upon construction, Rip Rap (or equivalent) will be placed at outlet of pond to disperse discharge onto the adjacent north property. This will allow discharge to be spread into sheet flow and/or shallow concentrated flow when flowing north and offsite, as existing.

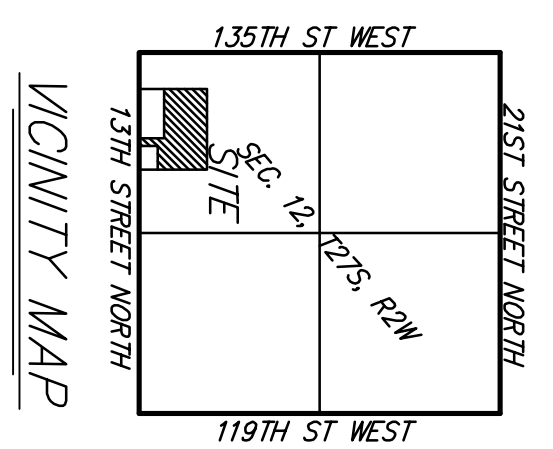
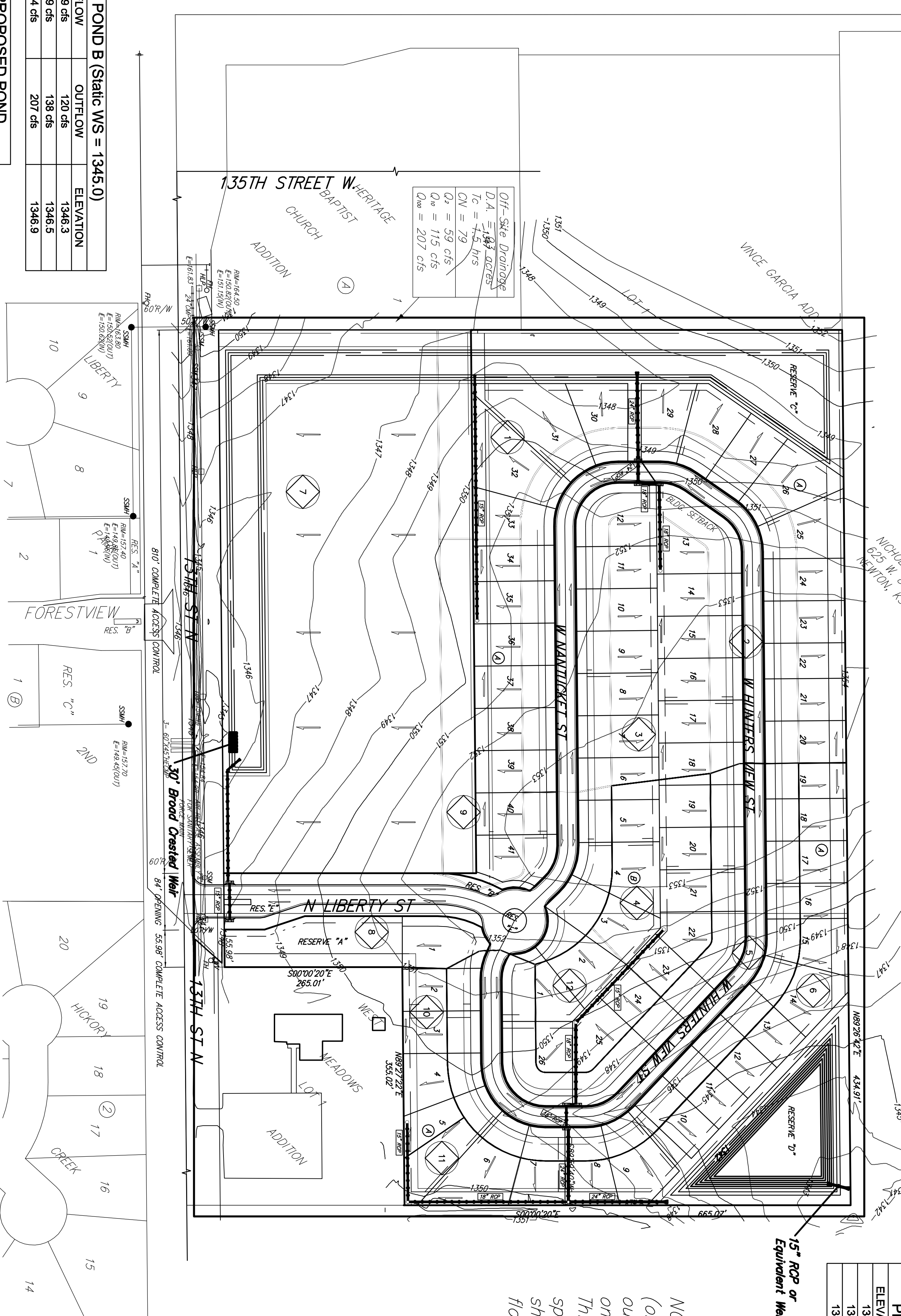
Basin ID	Area acres	Developed Flowrates		
		2-yr cfs	10-yr cfs	100-yr cfs
1	3.9	9.6	12.6	20.1
2	3.3	8.1	10.7	17.0
3	1.3	3.2	4.2	6.7
4	1.0	2.5	3.2	5.2
5	3.0	7.4	9.7	15.5
6	2.6	6.4	8.4	13.4
7	6.1	15.0	19.7	31.5
8	2.0	4.9	6.5	10.3
9	1.4	3.4	4.5	7.2
10	0.3	0.7	1.0	1.5
11	0.5	1.2	1.6	2.6
12	0.5	1.3	1.9	3.1
TOTAL	26.0	64	84	134



OWNER: HUNTERS INC. A KANSAS CORPORATION
 712 N. 109th St. W.
 SITE #12 - 67235
 222-027
 CITY OF WICHITA DISC. 20' SOUTH OF SOUTH LINE OF LOT 2, BLOCK 4, WARD 9, P.M. ABRIDON, L.S. & M.C. 1924, 1925

STAGE	INFLOW	OUTFLOW	ELEVATION
5 yr	149 cfs	120 cfs	1346.3
10 yr	169 cfs	138 cfs	1346.5
100 yr	244 cfs	207 cfs	1346.9

ELEVATION	AREA (acres)
1345	1.3
1346	1.6
1347	1.9



Proposed Storm Water Sewer
 Proposed Drop Inlet