

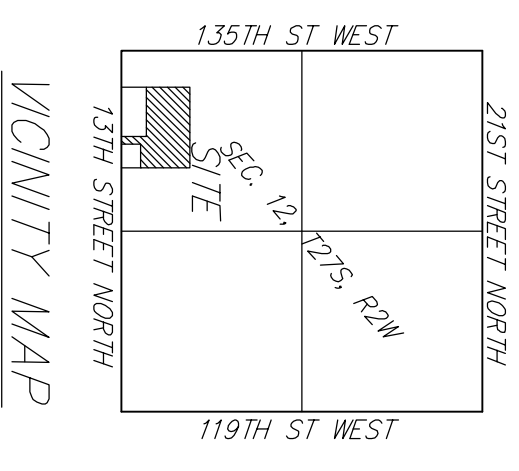
CRYSTAL GARDENS ADDITION

WICHITA, SEDGWICK COUNTY, KANSAS

AERIAL EXHIBIT



DATE OF PREPARATION: 27 JUNE, 2007
 DATE OF TOPOGRAPHY: 30 NOVEMBER, 2005
 CONTOUR INTERVALS = 2 FOOT



VICINITY MAP