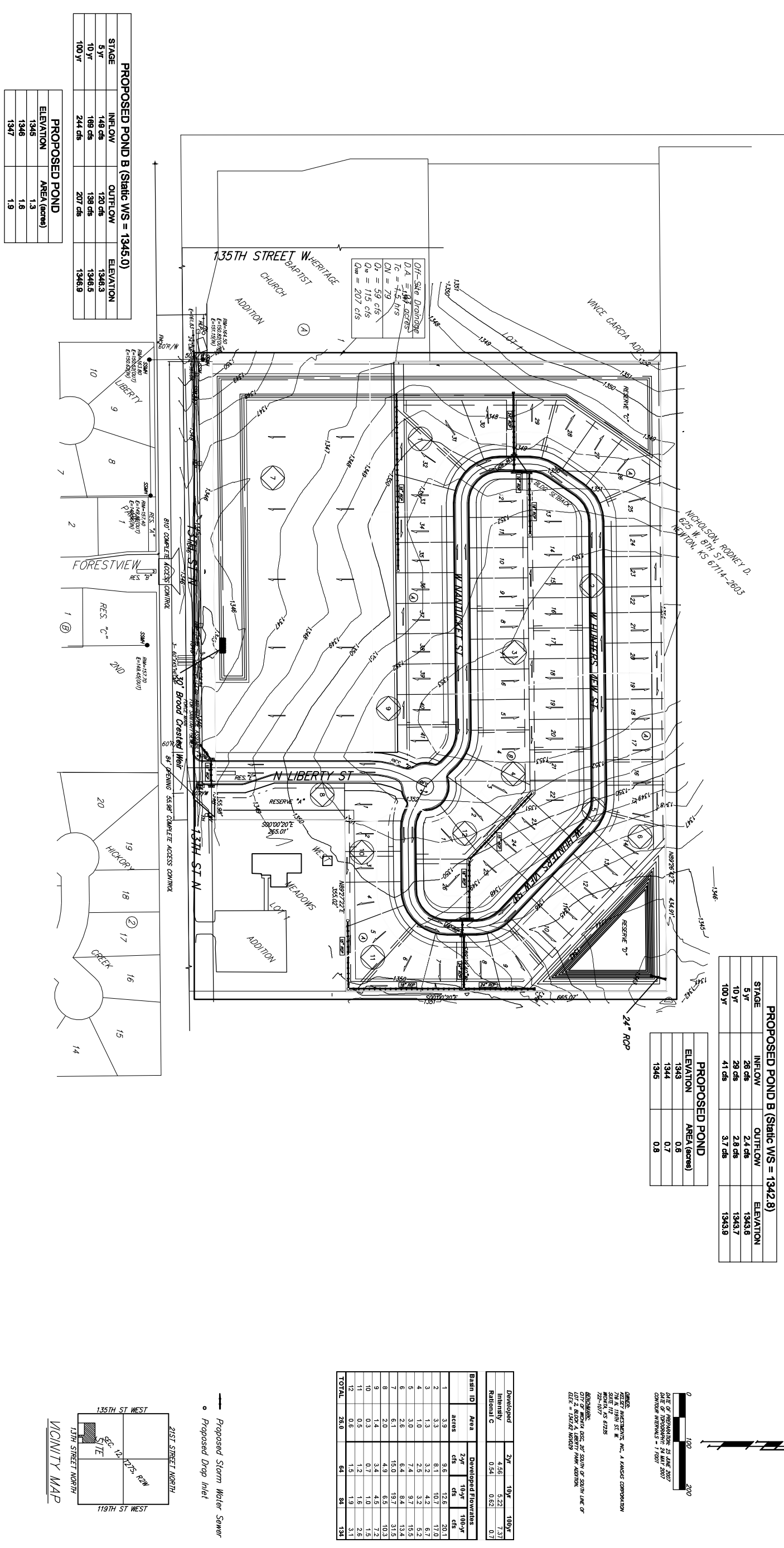


CRYSTAL GARDENS ADDITION

WICHITA, SEDGWICK COUNTY, KANSAS

DRAINAGE PLAN



PROPOSED POND B (Static WS = 1342.8)

STAGE	INFLOW	OUTFLOW	ELEVATION
5 Yr	26 cfs	2.4 cfs	1343.8
10 Yr	29 cfs	2.8 cfs	1343.7
100 Yr	41 cfs	3.7 cfs	1343.8

PROPOSED POND

ELEVATION	AREA (acres)
1343	0.8
1344	0.7
1345	0.8

Off-Site Drainage
 D.A. = 1.84%
 $T_c = 4.5$ Hrs
 $CN = 79$
 $O_1 = 59$ cfs
 $O_2 = 115$ cfs
 $O_{100} = 207$ cfs

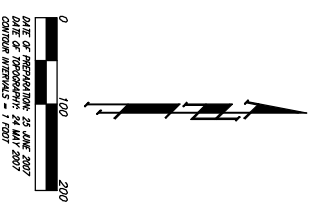
PROPOSED POND B (Static WS = 1345.0)

STAGE	INFLOW	OUTFLOW	ELEVATION
5 Yr	148 cfs	120 cfs	1346.3
10 Yr	169 cfs	138 cfs	1346.5
100 Yr	244 cfs	207 cfs	1346.9

PROPOSED POND

ELEVATION	AREA (acres)
1345	1.3
1346	1.6
1347	1.9

Basin ID	Area (acres)	Developed Flowrates		
		2-yr cfs	10-yr cfs	100-yr cfs
1	3.9	9.6	12.6	20.1
2	3.3	8.1	10.7	17.0
3	1.3	3.2	4.2	6.7
4	3.0	7.5	9.7	15.2
5	2.6	6.4	8.4	13.2
6	6.1	15.0	19.7	31.5
8	2.0	4.9	6.5	10.3
9	1.4	3.4	4.5	7.2
10	0.3	0.7	1.0	1.5
11	0.5	1.2	1.6	2.6
12	0.6	1.5	1.9	3.1
TOTAL	28.0	64	84	134



GENERAL NOTES:
 1. PREPARED BY: MASTERS INC., A KANSAS CORPORATION
 2. SHEET 111 OF 111
 3. DATE: 2/1/07
 4. PROJECT: CRYSTAL GARDENS ADDITION
 5. DRAWN BY: MASTERS INC.
 6. CHECKED BY: MASTERS INC.
 7. CITY OF WICHITA, SEDGWICK COUNTY, KANSAS
 8. LOT 2, BLOCK A, LIBERTY PARK ADDITION
 9. E.L.V. = 15016 00000

Proposed Storm Water Sewer
 Proposed Drop Inlet

