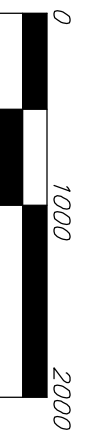
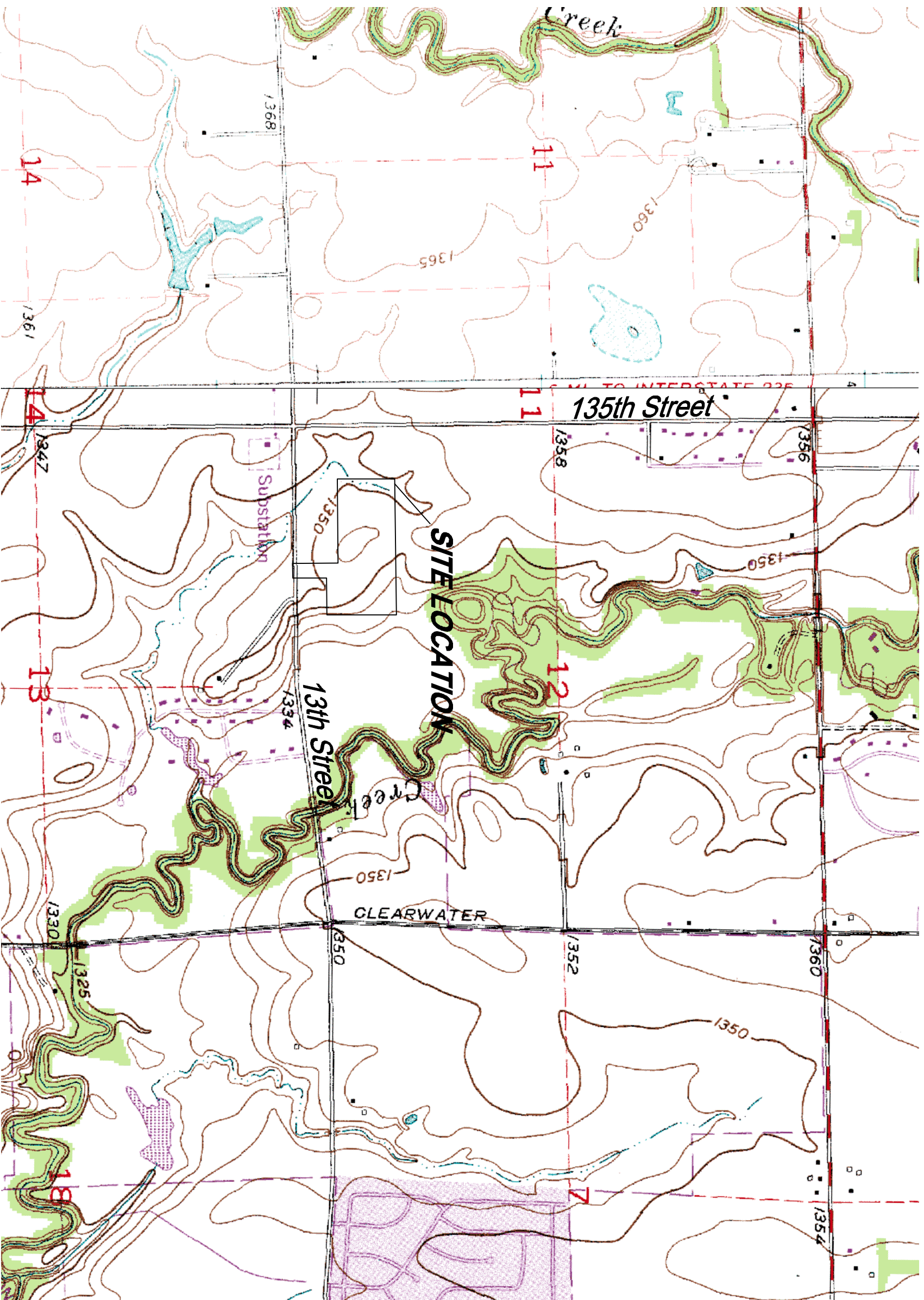


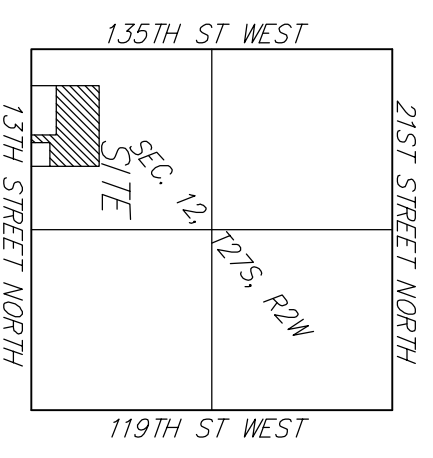
# CRYSTAL GARDENS ADDITION

WICHITA, SEDGWICK COUNTY, KANSAS


SITE LOCATION



DATE OF PREPARATION: 27 JUNE, 2007  
 DATE OF TOPOGRAPHY: 30 NOVEMBER, 2005  
 CONTOUR INTERVALS = 2 FOOT



VICINITY MAP


**Baughman Company, P.A.**  
 315 E. 11th St. Wichita, KS 67211 P 316-262-7211 F 316-262-0149  
ENGINEERING | SURVEYING | PLANNING | LANDSCAPE ARCHITECTURE