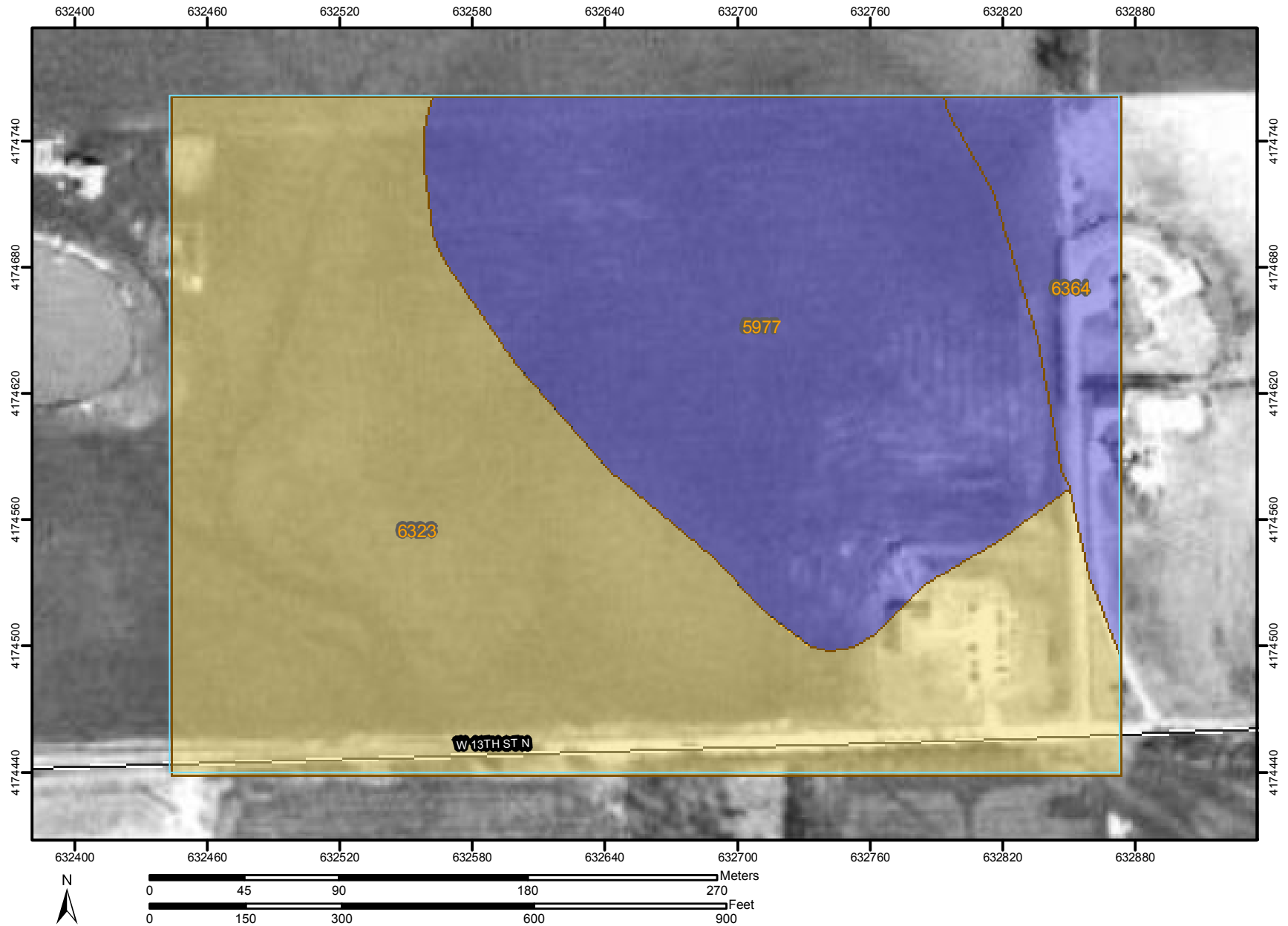


Hydrologic Soil Group—Sedgwick County, Kansas



## MAP LEGEND

### Area of Interest (AOI)

 Area of Interest (AOI)

### Soils

 Soil Map Units

### Soil Ratings


 A

 A/D

 B

 B/D

 C

 C/D


 D

 Not rated or not available

### Political Features


#### Municipalities

 Cities

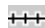
 Urban Areas

### Water Features

 Oceans

 Streams and Canals

### Transportation


 Rails


### Roads

 Interstate Highways

 US Routes

 State Highways

 Local Roads

 Other Roads

## MAP INFORMATION

Original soil survey map sheets were prepared at publication scale. Viewing scale and printing scale, however, may vary from the original. Please rely on the bar scale on each map sheet for proper map measurements.

Source of Map: Natural Resources Conservation Service  
 Web Soil Survey URL: <http://websoilsurvey.nrcs.usda.gov>  
 Coordinate System: UTM Zone 14N

This product is generated from the USDA-NRCS certified data as of the version date(s) listed below.

Soil Survey Area: Sedgwick County, Kansas  
 Survey Area Data: Version 3, Dec 21, 2006

Date(s) aerial images were photographed: 3/20/1996; 3/31/1996

The orthophoto or other base map on which the soil lines were compiled and digitized probably differs from the background imagery displayed on these maps. As a result, some minor shifting of map unit boundaries may be evident.

## Hydrologic Soil Group

Hydrologic Soil Group— Summary by Map Unit — Sedgwick County, Kansas				
Map unit symbol	Map unit name	Rating	Acres in AOI	Percent of AOI
5977	Vanoss silt loam, 1 to 3 percent slopes	B	13.7	38.1%
6323	Blanket silt loam, 1 to 3 percent slopes	C	19.7	54.8%
6364	Milan clay loam, 3 to 6 percent slopes, eroded	B	2.6	7.2%
Totals for Area of Interest (AOI)			35.9	100.0%

### Description

Hydrologic soil groups are based on estimates of runoff potential. Soils are assigned to one of four groups according to the rate of water infiltration when the soils are not protected by vegetation, are thoroughly wet, and receive precipitation from long-duration storms.

The soils in the United States are assigned to four groups (A, B, C, and D) and three dual classes (A/D, B/D, and C/D). The groups are defined as follows:

Group A. Soils having a high infiltration rate (low runoff potential) when thoroughly wet. These consist mainly of deep, well drained to excessively drained sands or gravelly sands. These soils have a high rate of water transmission.

Group B. Soils having a moderate infiltration rate when thoroughly wet. These consist chiefly of moderately deep or deep, moderately well drained or well drained soils that have moderately fine texture to moderately coarse texture. These soils have a moderate rate of water transmission.

Group C. Soils having a slow infiltration rate when thoroughly wet. These consist chiefly of soils having a layer that impedes the downward movement of water or soils of moderately fine texture or fine texture. These soils have a slow rate of water transmission.

Group D. Soils having a very slow infiltration rate (high runoff potential) when thoroughly wet. These consist chiefly of clays that have a high shrink-swell potential, soils that have a high water table, soils that have a claypan or clay layer at or near the surface, and soils that are shallow over nearly impervious material. These soils have a very slow rate of water transmission.

If a soil is assigned to a dual hydrologic group (A/D, B/D, or C/D), the first letter is for drained areas and the second is for undrained areas. Only the soils that in their natural condition are in group D are assigned to dual classes.

## Rating Options

*Aggregation Method:* Dominant Condition

*Component Percent Cutoff:* None Specified

*Tie-break Rule:* Lower