

VICINITY MAP

FIRE STATION 18 ADDITION

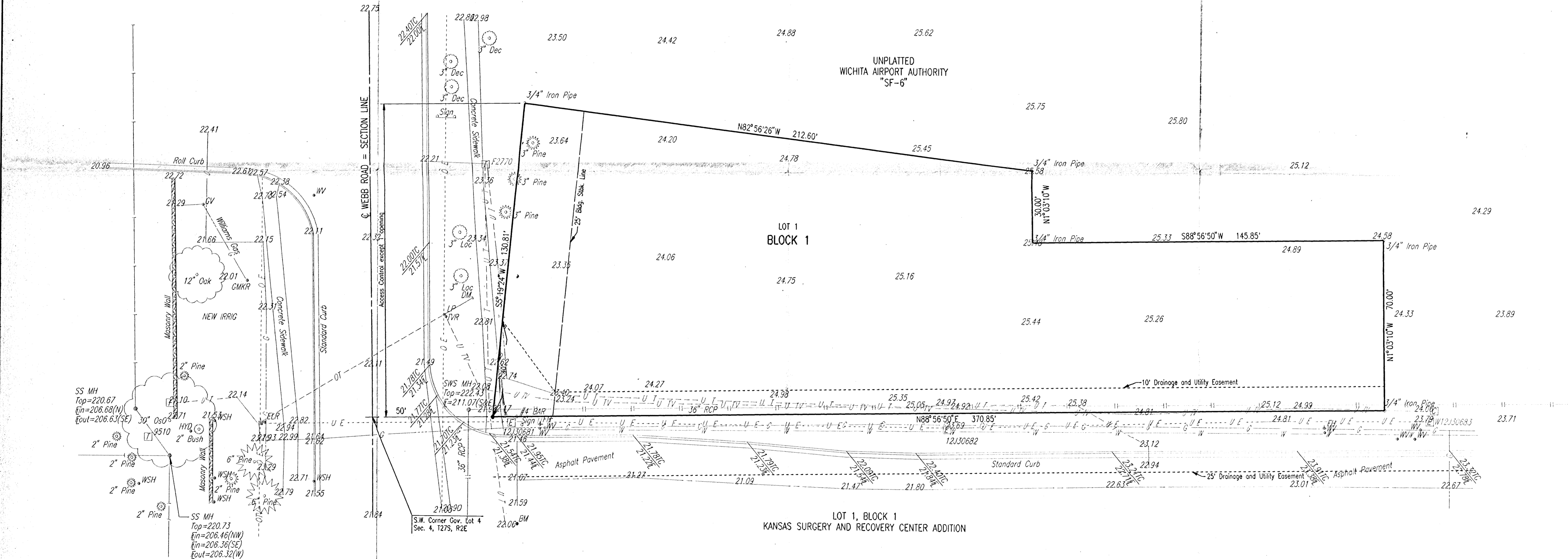
OWNER: THE CITY OF WICHITA
455 N. MAIN
WICHITA, KANSAS 67202

ENGINEER: PROFESSIONAL ENGINEERING CONSULTANTS, P.A.
303 S. TOPEKA
WICHITA, KANSAS 67202

SCALE: 1"=20'

● = IRON SET

B.M. - CHISELED "d" IN TOP OF CURB AT EAST END RETURN
S.E. CORNER WEBB ROAD AND NORTH DRIVE TO
KANSAS SURGERY AND RECOVERY CENTER.
ELEV.=222.05 CITY DATUM



DSNR: CLW - OPER - DEP - SCALE: 1"=20.00
CA 98719740 vicinity 07-02-1997 11:00:38 am