

# PRELIMINARY PLAT FIRST BIBLE BAPTIST CHURCH ADDITION

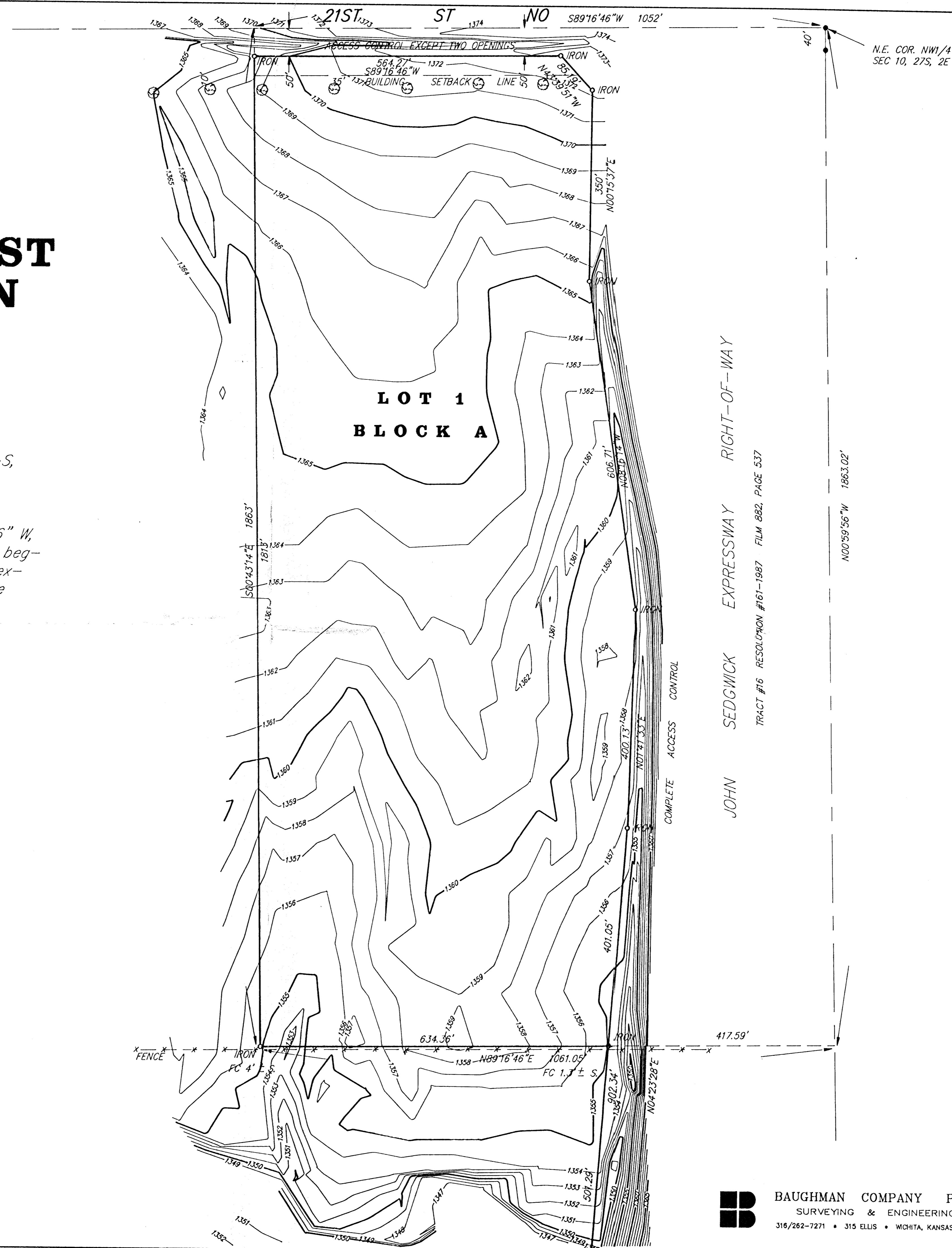
SEDGWICK COUNTY, KANSAS

*DESCRIPTION*

Beginning at the N.E. Corner of the NW1/4 of Sec. 10, Twp. 27-S, R-2-E of the 6th P.M., Sedgwick County, Kansas; thence S 89°16'46" W, along the north line of said NW1/4, 1052 feet; thence S 00°43'14" E, 1863 feet; thence N 89°16'46" E, 1061.05 feet to the east line of said NW1/4; thence N 00°59'56" W, along the east line of said NW1/4, 1863.02 feet to the place of beginning, except the north 40 feet thereof for road purposes and except that part for the John Sedgwick Expressway, Film 882, Page 537.

FIRST BIBLE BAPTIST CHURCH  
% JIM THOMPSON

3318 E Harry  
Wichita, KS 67218-0233  
Ph. 688-1030



JOHN SEDGWICK EXPRESSWAY RIGHT-OF-WAY

TRACT #16 RESOLUTION #161-1987 FILM 882, PAGE 537

N00°59'56" W 1863.02'



1" = 100'  
ELEV = M.S.L.  
18 FEBRUARY 1992