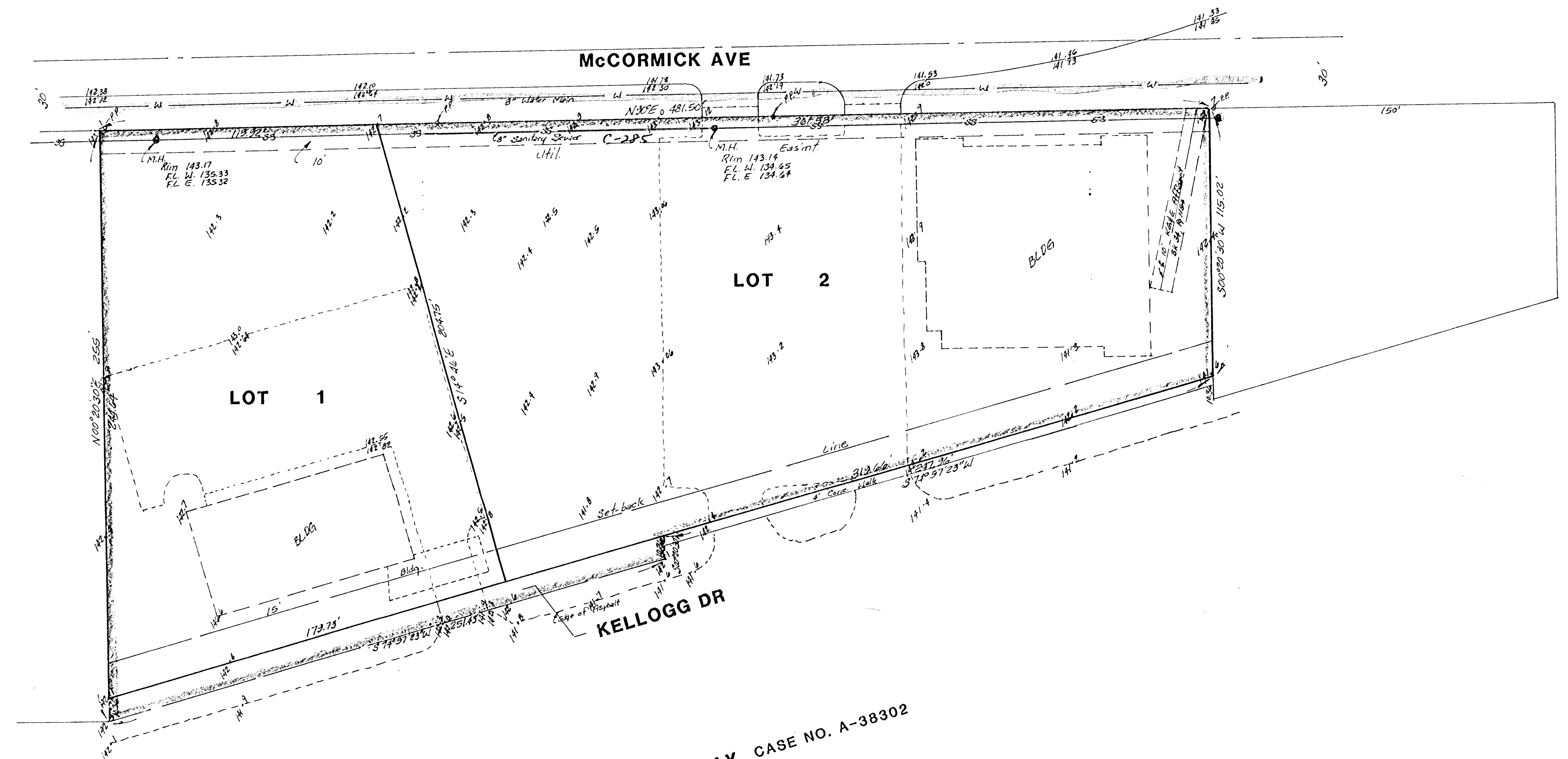


SKETCH PLAT THE FIRST CREDIT UNION ADDITION

PART OF LOTS 16 AND 17 FAIRLAWN ACRES AND
LOT 1 KANSAS FEDERAL CREDIT UNION ADDITION

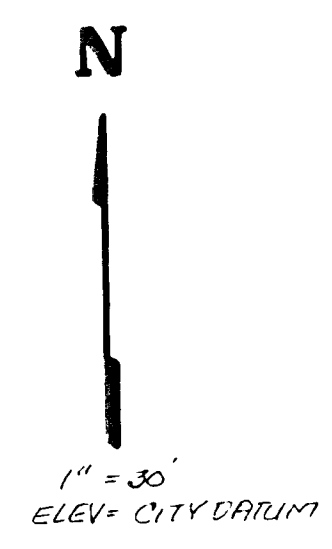
MIDAMERICAN CREDIT UNION
KANSAS CREDIT UNION LEAGUE

GARY ATKINS, PRES.
DENNIS HOFTS, PRES.



KELLOGG ST US-54 HIGHWAY CASE NO. A-38302

300
100
500
42000



BENCH MARK:
"a" cut in top of curb 1/4" E of
N.W. Cor. Lot 16, Fairlawn Acres
Elev. = 142.64 City Datum