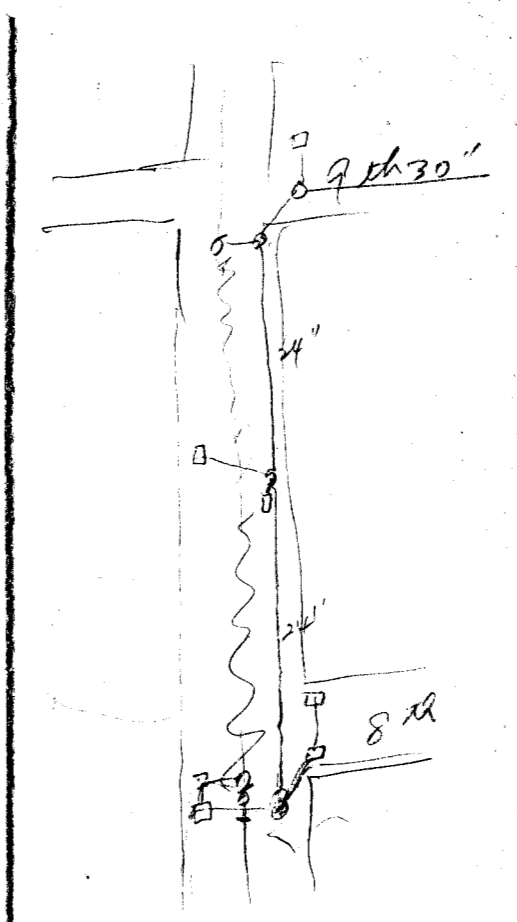
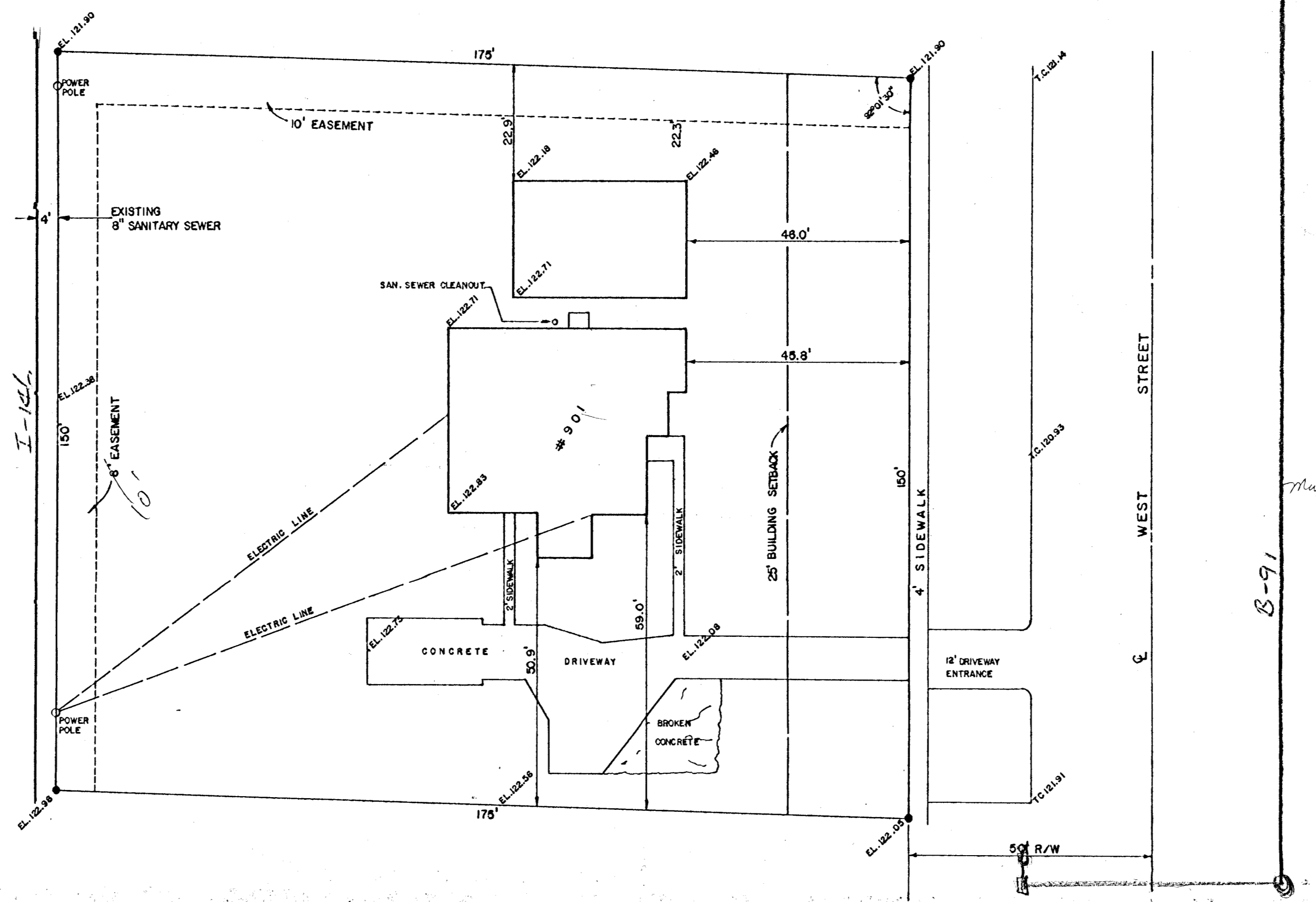


LEGAL DESCRIPTION:
 LOT 27, BLOCK 1,
 GALYARDT'S FIRST ADDITION



SKETCH PLAN AND SURVEY
 OF EXISTING CONDITIONS
FISH POND WEST
 WICHITA, SEDGWICK COUNTY, KANSAS

BM. CITY OF WICHITA BENCH MARK DISC
 24' S. & 52' W. OF E BOTH
 EL. 121.69

AIR CAPITOL LAND SURVEYORS

1987