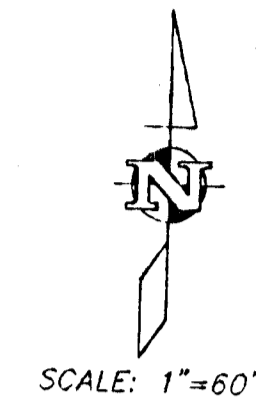
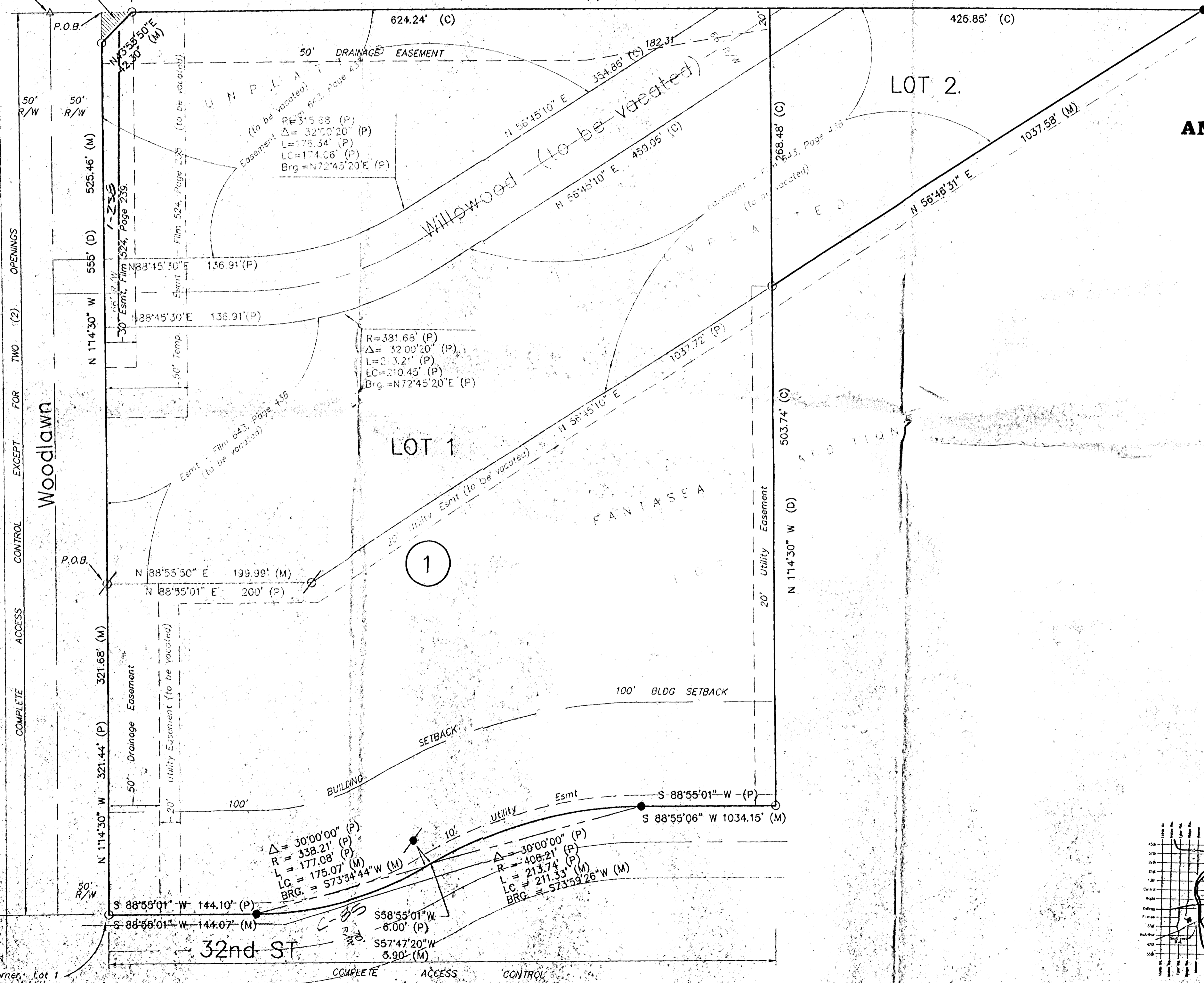


K-96



Contingent Street Dedication per Film 0956, Page 0023

W 1/4 Cor 31-26S-2E

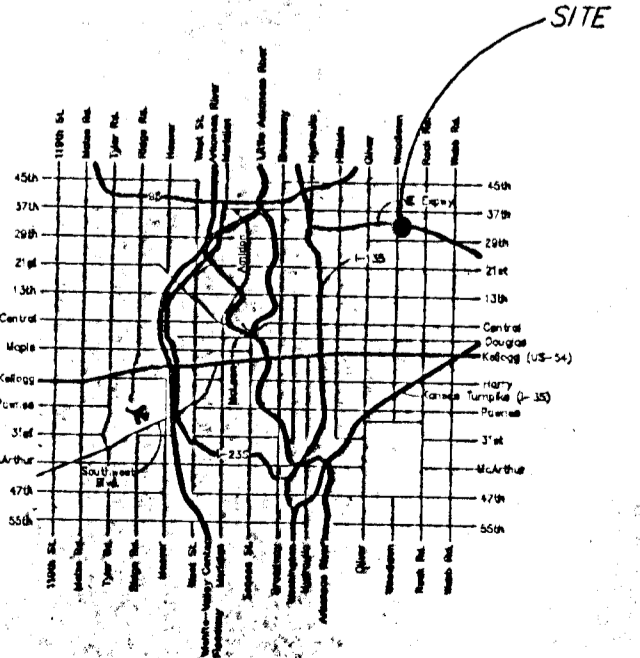


FANTASEA SECOND ADDITION

AN ADDITION TO WICHITA, SEDGWICK COUNTY, KANSAS

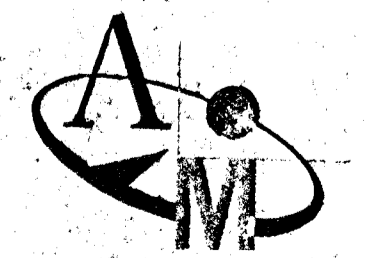
- LEGEND:**
- Found 3/4" iron pipes
 - Found 1/2" iron pipe
 - Found rebar w/ Mid-Kansas cap
 - X "x" found in sidewalk
 - Set LDJ rebar and cap
 - (P) PLATTED
 - (M) MEASURED
 - (C) CALCULATED
 - (D) DESCRIBED

Note:
Community Unit Plan
DP-195 on file with
Metropolitan Area Dept.



LOCATION MAP

5/31/122P
98032, 0101



AUSTIN MILLER P.A.
ENGINEERING SERVICES
254 S. Lewis, Suite 210 Wichita, KS 67211
316/262-1201 Fax 316/262-6773