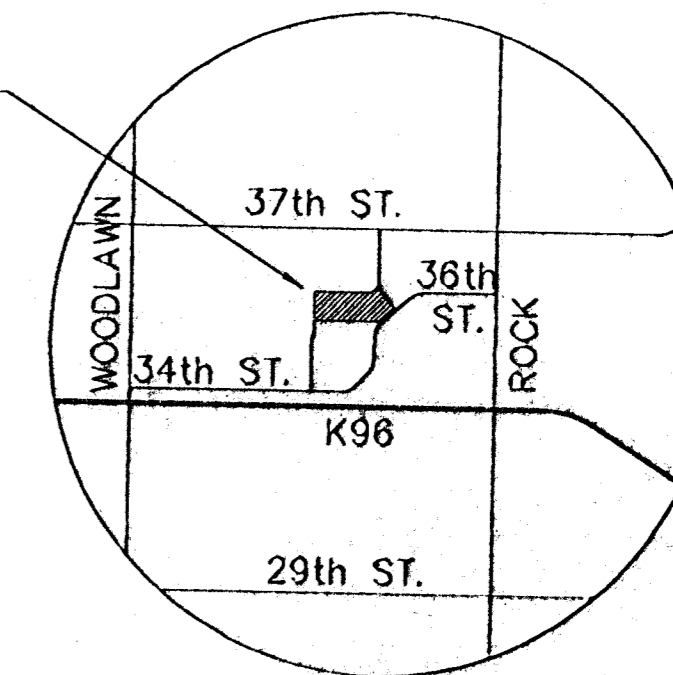


N.W. COR. OF N.E. 1/4  
SEC. 31, T. 26 S., R. 2 E.

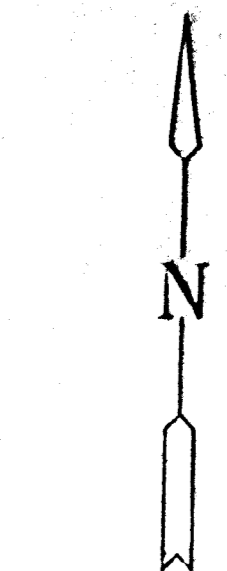
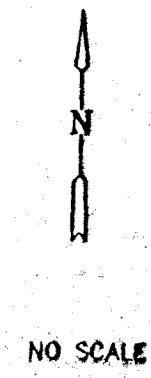
LEEWOOD VILLAGE  
AT NORTHROCK  
SECOND



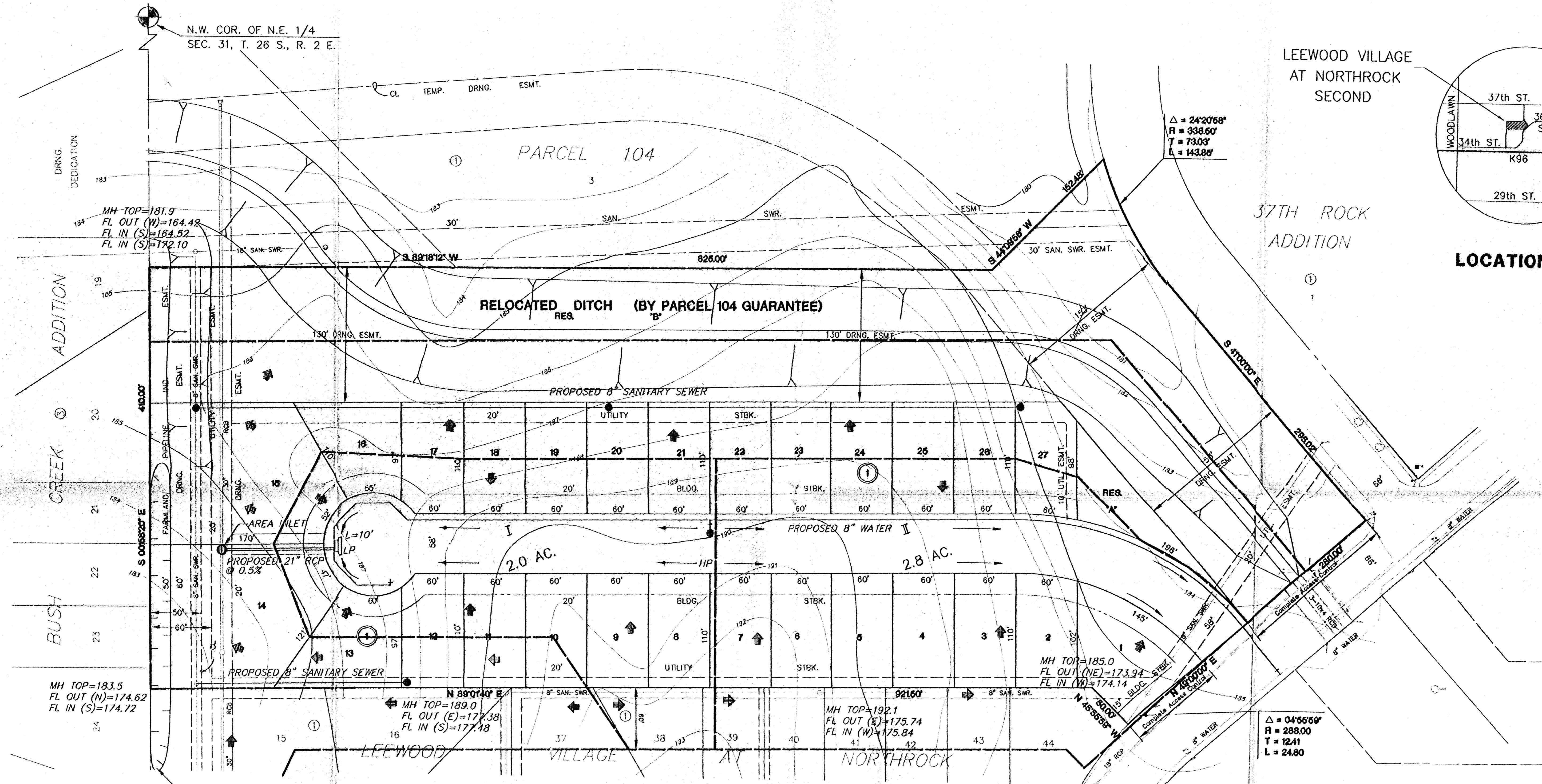
LOCATION MAP

$\Delta = 24^{\circ}20'58''$   
 $R = 338.60'$   
 $T = 73.03'$   
 $L = 143.86'$

37TH ROCK  
ADDITION



$\Delta = 04^{\circ}55'59''$   
 $R = 288.00'$   
 $T = 1241'$   
 $L = 24.80'$



CONSTRUCT PROTECTIVE BERM & SOFT SWALE  
TO REDIRECT HISTORIC WESTERLY FLOW NORTH  
TO DRAINAGE DITCH

**DRAINAGE & UTILITY PLAN**

**LEEWOOD VILLAGE AT NORTHROCK SECOND**

OWNER: LEEWOOD HOMES INC.  
8130 LEGION  
WICHITA, KANSAS 67204

	AREA	C <sub>2</sub>	C <sub>100</sub>	T <sub>2</sub>	T <sub>100</sub>	I <sub>2</sub>	I <sub>100</sub>	Q <sub>2</sub>	Q <sub>100</sub>	PIPE SIZE	PIPE SLOPE	INLET SIZE
I	2.0	0.57	0.79	22	15	2.38	7.37	2.7	11.8	21"	0.5%	L=10'
II	2.8	0.57	0.79	25	15	2.22	7.37	3.5	16.3	EXISTING R.C.B. & INLETS		

BENCHMARK:  
Conc. Nail on N. Edge of M.H. 72' E. of  
Center Sec. 31, 26S, 2E.  
Elev.=194.16 (City Datum)

**LEEWOOD VILLAGE  
AT NORTHROCK  
SECOND**

MID-KANSAS ENGINEERING CONSULTANTS INC.  
3500 NORTH ROCK ROAD  
BUILDING #300  
WICHITA, KANSAS 67226  
(316) 636-5566

Design	GJA
Drawn by	KKL
Checked by	
Date	8/20/94
Job no.	
Sheet	1
Of	1

E:\174\11\LEEWOOD\46070\PROGRA\UTIL.PLOT Mon Jul 18 11:27:56 1994