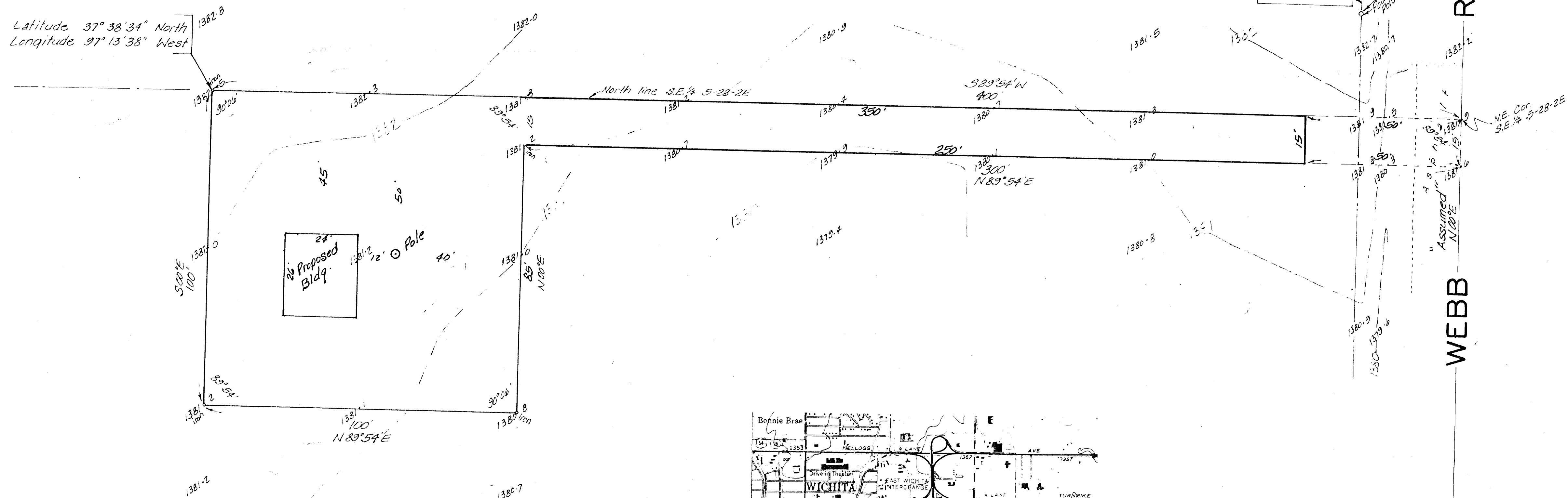


Latitude 37° 38' 34" North  
Longitude 97° 13' 38" West



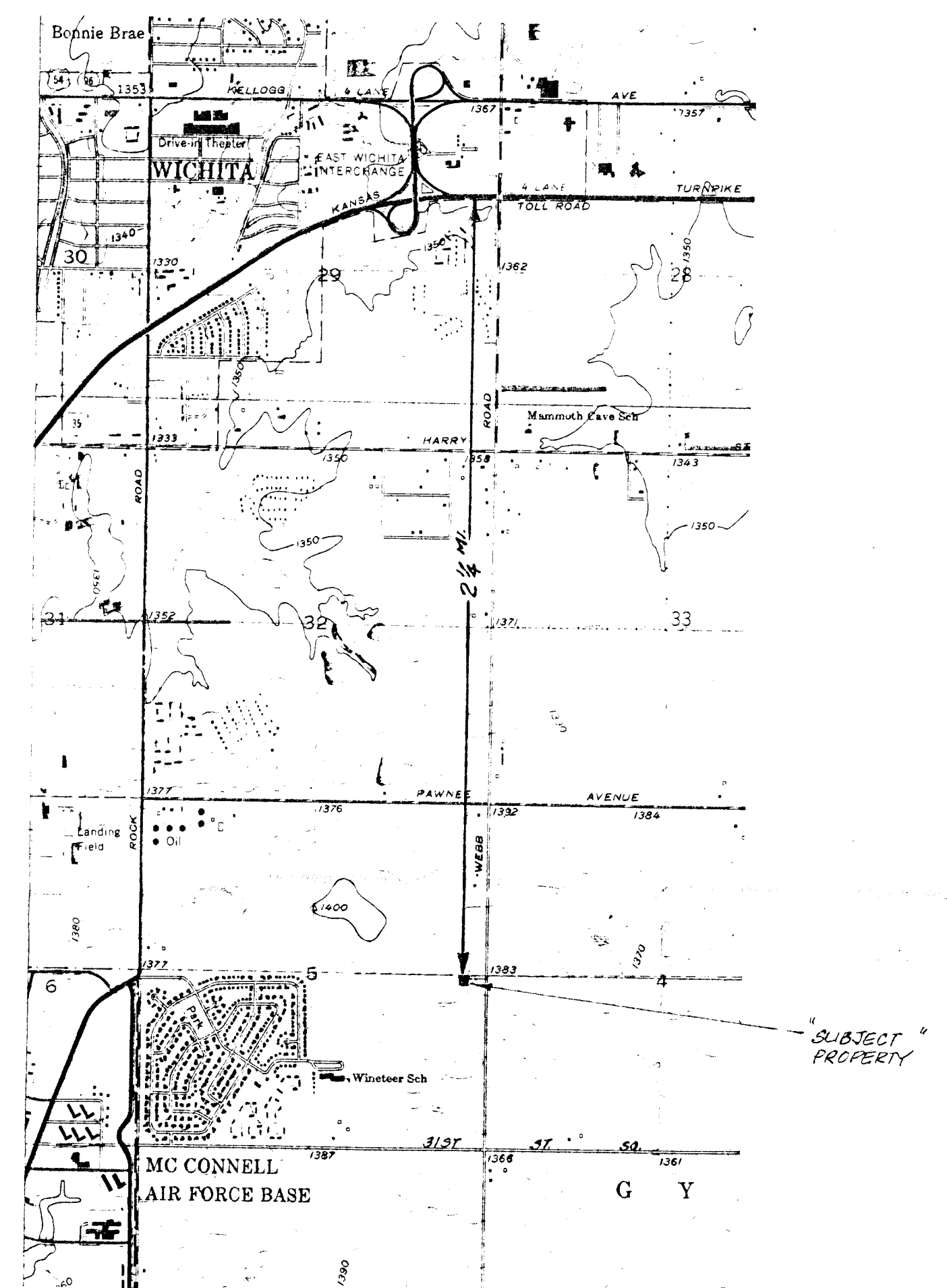
Kansas Gas & Electric Co.  
120 E. 137<sup>th</sup> St.  
Wichita, Kansas  
69 KV transmission line  
12 KV distribution line  
3 phase, 4 wire

Bench mark:  
Railroad spike in east  
side of power pole  
Elev. = 137.29 City Datum =  
Elev. = 1384.63 M.S.L.

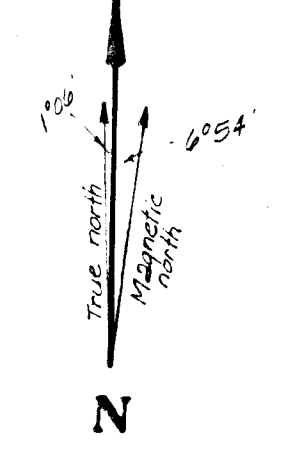
**SKETCH PLAT  
NOVICK ADDITION**

A TRACT IN THE S.E. 1/4 OF 5-28-2E

OWNER: BERNARD NOVICK



Vicinity Plat  
1" = 2000'



Scale 1" = 20'  
North Direction  
Reference: U.S.G.S.  
7.5 Quad 1341  
Photorevised 1970 & 1979

Architect	Consultant	
Project		Sheet
ADVANCED MOBILE PHONE SERVICE		
Drawing		Scale
Approved by	AMPS Location Number	Date
AMPS - Director of Operations		
	AMPS Job Number	Drawing Number
AMPS - General Manager - Construction		