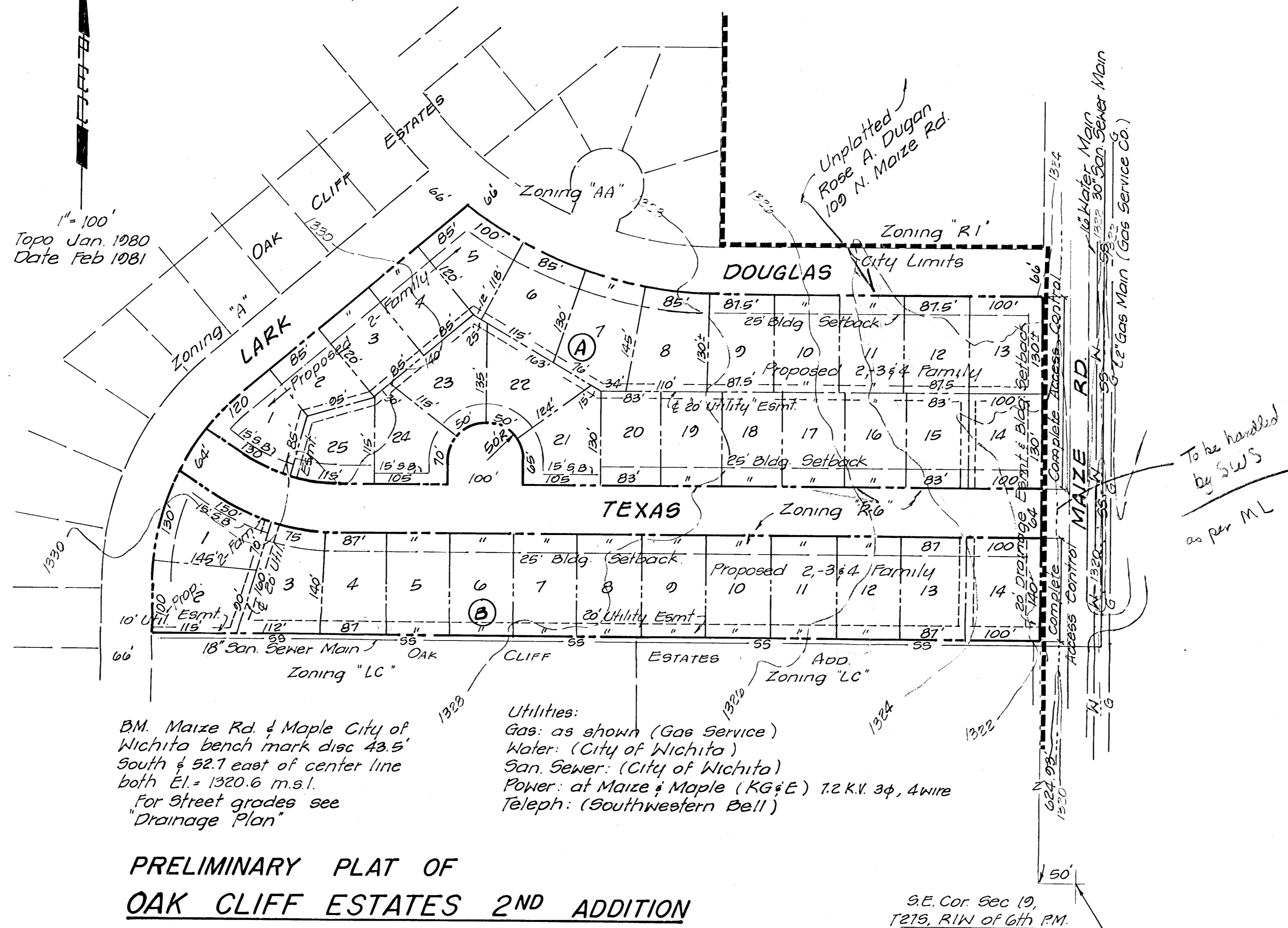


1" = 100'  
 Topo Jan. 1980  
 Date Feb 1981



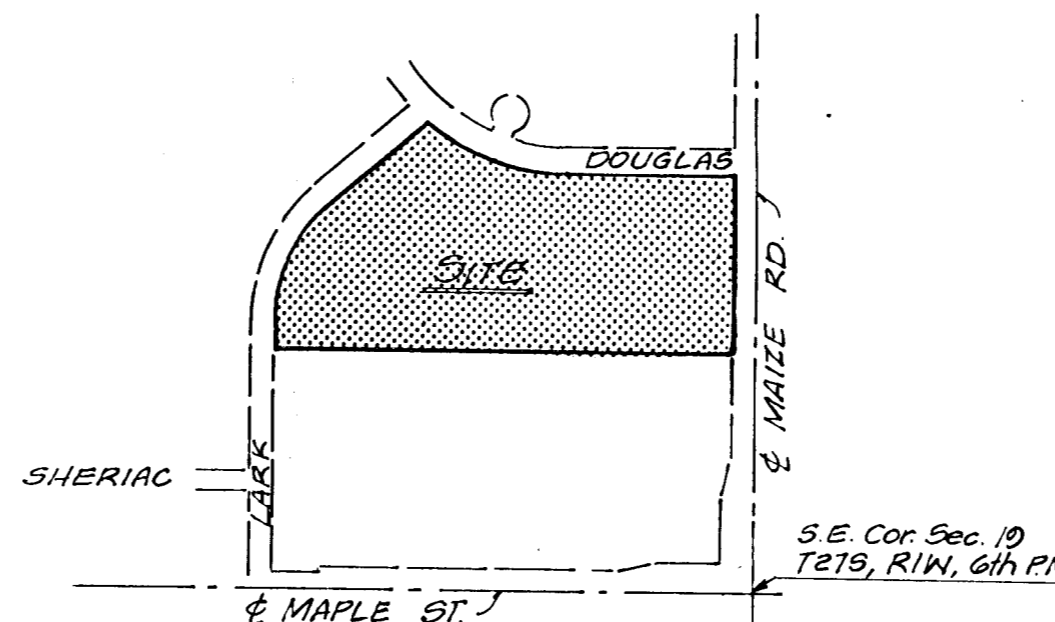
B.M. Maize Rd & Maple City of  
 Wichita bench mark disc 43.5'  
 South & 52.7 east of center line  
 both El. = 1320.6 m.s.l.  
 For Street grades see  
 "Drainage Plan"

Utilities:  
 Gas: as shown (Gas Service)  
 Water: (City of Wichita)  
 San. Sewer: (City of Wichita)  
 Power: at Maize & Maple (KG&E) 7.2 K.V. 3φ, 4 wire  
 Teleph: (Southwestern Bell)

**PRELIMINARY PLAT OF  
 OAK CLIFF ESTATES 2ND ADDITION**

OWNER-DEVELOPER: Inland Investment Co. Inc.  
 200 Douglas Bldg.  
 Wichita Kansas.

ENGINEER: Professional Engineering Consultants.  
 355 Ellis  
 Wichita, Kansas.



Oak Cliff Estates  
 2nd Addn.