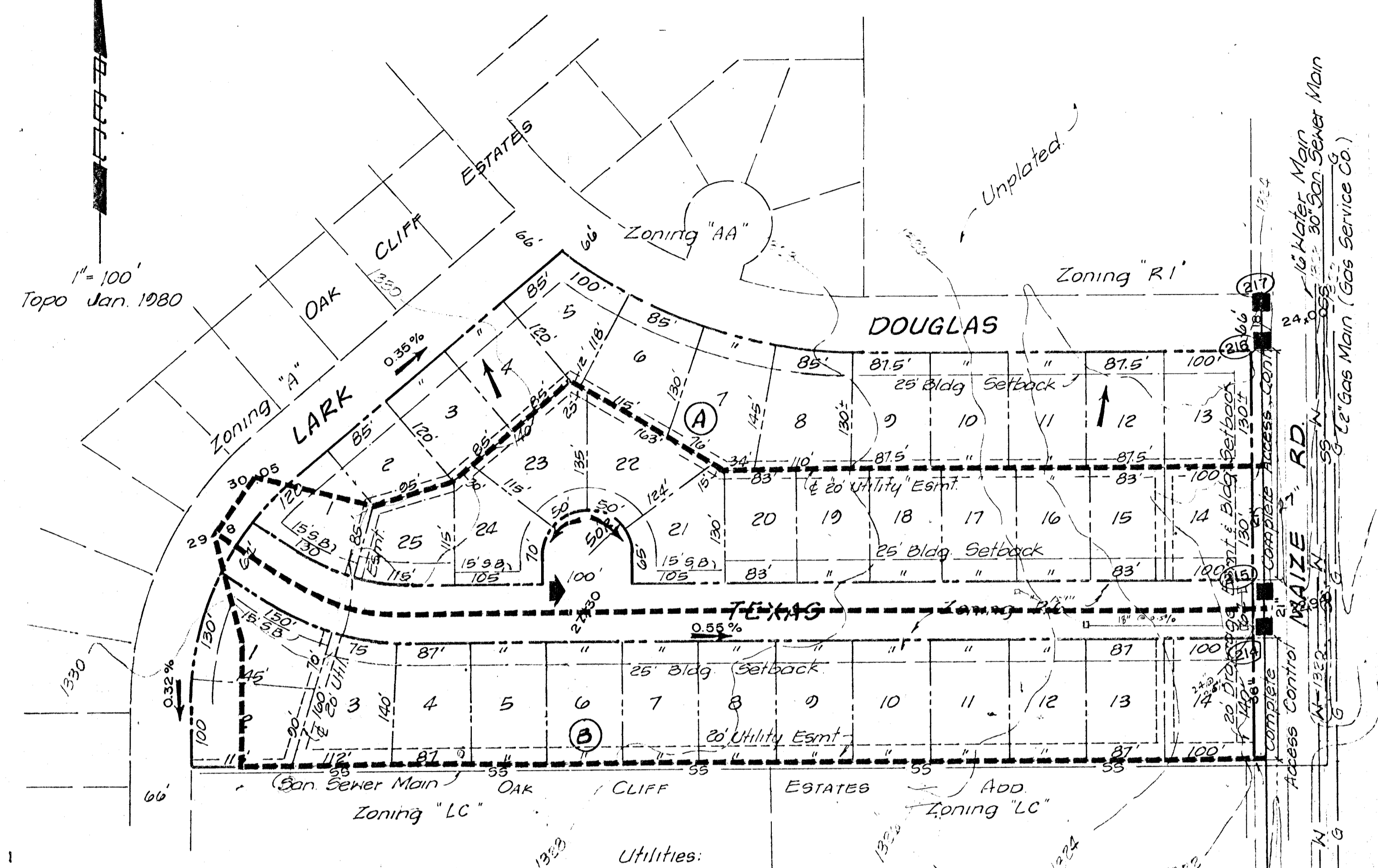


1" = 100'  
Topo Jan. 1980



BM. Maize Rd. & Maple City of Wichita bench mark disc 43.5' South & 52.7 east of center line. both El. = 133.20 City Data.

Utilities:  
Gas: as shown (Gas Service)  
Water: (City of Wichita)  
San. Sewer: (City of Wichita)  
Power: at Maize & Maple (KG&E)  
Teleph: (Southwestern Bell)

**DRAINAGE PLAN OF  
OAK CLIFF ESTATES 2ND ADDITION**  
FEBRUARY 1991

OWNER-DEVELOPER : Inland Investment Co. Inc.  
200 Douglas Bldg.  
Wichita Kansas.

ENGINEER : Professional Engineering Consultants.  
355 Ellis  
Wichita, Kansas.

| LEGEND |                        |
|--------|------------------------|
| (217)  | Inlet Identification   |
| ---    | Drainage Area          |
| +      | Inlet Location         |
| 27x3   | Toc Elevation          |
| 18"    | Pipe Size              |
| 0.55%  | Street Grade, Low Flow |
| →      | 100 Yr. Routing        |

- NOTES
- 1) All pipes sized based on  $n = 0.013$
  - 2) Allowable street flows and inlet locations based on standard curb and gutter section.

