

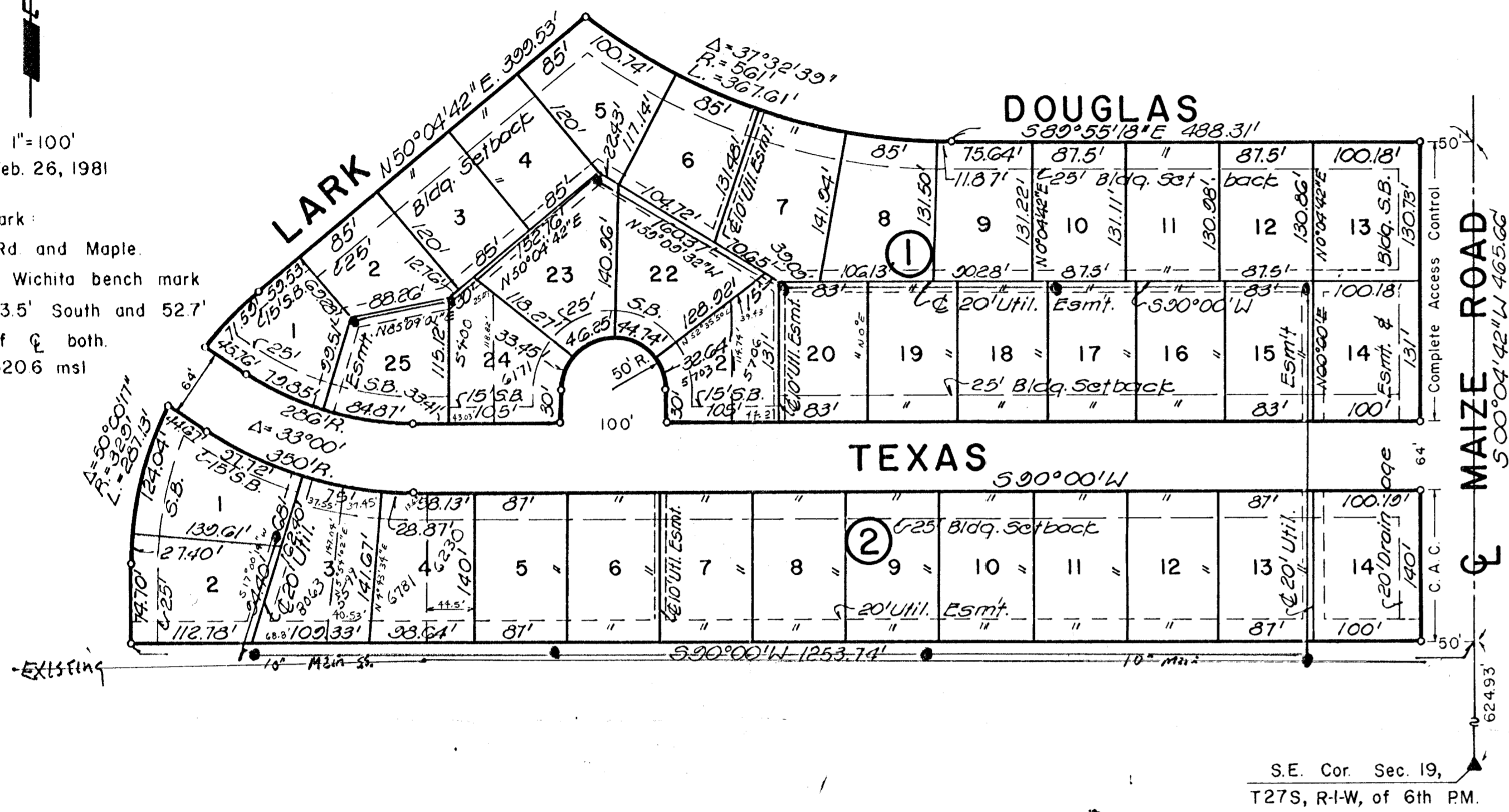
OAK CLIFF ESTATES 2ND ADDITION

TO WICHITA, SEDGWICK COUNTY KANSAS

A REPLAT OF LOT 4, BLK. 20, OAK CLIFF ESTATES, WICHITA, SEDGWICK COUNTY, KANSAS

1"=100'
Feb. 26, 1981

Bench Mark:
Maize Rd and Maple.
City of Wichita bench mark
disc 43.5' South and 52.7'
East of C both.
Elev 1320.6 msl



S.E. Cor. Sec. 19,
T27S, R1-W, of 6th PM.

State of Kansas
County of Sedgwick

I, R.W. Linn, a Professional Engineer in aforesaid State and County, do hereby certify that on this _____ day of _____, 1981, I have caused to be surveyed and platted "OAK CLIFF ESTATES 2ND ADDITION" to Wichita, Sedgwick County, Kansas, into Lots, Blocks and a Street, the same being a Replat of Lot 4, Block 20, Oak Cliff Estates to Wichita, Sedgwick County, Kansas; All in the Southeast 1/4 of Section 19, Township 21 South, Range 1 West of the 6th P.M.

R.W. Linn P.E.
No. 3684

Know all men by these presents that we, the undersigned property owners of the Land as above set forth in the Engineer's Certificate, have caused the Land to be surveyed and platted into Lots, Blocks and a Street, the same to be known as "Oak Cliff Estates 2nd Addition", to Wichita, Sedgwick County, Kansas. Easements, as indicated for the construction and maintenance of Public Utilities and for drainage purposes, are hereby granted. The Street is hereby dedicated to and for the use of the public. All abutter's Rights of Access to and from Maize Road over and across the East Lines of Blocks 1 and 2, are hereby granted to the City of Wichita. All portions of Oak Cliff Estates within the above described Addition are hereby vacated and replatted by virtue of R.S.A. 1972 Supp. 12-512(b).

INLAND INVESTMENT CO., INC.
_____, President
_____, Secretary

State of Kansas
County of Sedgwick

Be it remembered that on this _____ day of _____, 1981, before me, a notary public in aforesaid State and County, came Inland Investment Co. Inc. by its president, _____; and its secretary, _____, to me personally known to be the same persons who executed the foregoing instrument of writing and duly acknowledge the execution of same for and on behalf and as the act and deed of said company in testimony whereof I have hereunto set my hand and affixed my notarial seal the day and year above written.

My Commission Expires: _____
_____, Notary Public

We, the Fourth National Bank and Trust Co., holder of a mortgage on the above described property, do hereby consent to the platting of "Oak Cliff Estates 2nd Addition", to Wichita, Sedgwick County, Kansas.

State of Kansas
County of Sedgwick

Be it remembered that on this _____ day of _____, 1981, before me, a notary public in and for said State and County, came the Fourth National Bank and Trust Co., by its _____, to me personally known to be the same person who executed the foregoing instrument of writing and duly acknowledge the execution of same as his voluntary act and deed of said bank, in testimony whereof I have hereunto set my hand and affixed my notarial seal the day and year above written.

My Commission Expires _____
_____, Notary Public

This plat has been submitted to and approved by the Wichita-Sedgwick County Metropolitan Area Planning Commission, Wichita, Kansas.

Dated this _____ day of _____, 1981.
_____, Chairman
Robert A. Lakin, Secretary

This plat approved and all dedications shown hereon are accepted by the City Commission of the City of Wichita, Kansas.

Dated this _____ day of _____, 1981.
_____, Mayor
Robert A. Knight
_____, City Clerk
Donald C. Gisick

This is to certify that this instrument was filed for record in the Register of Deeds at _____: _____ M. on the _____ day of _____, 1981.

_____, Register of Deeds
Belle F. McCart
_____, Deputy
Pat Kettler

This plat approved and all dedications shown hereon are accepted by the Board of County Commissioners of Sedgwick County, Kansas.

Dated this _____ day of _____, 1981.
_____, Chairman
Donald E. Graag
_____, Commissioner
Jack Spratt
_____, Commissioner
Tom Scott

Attest:
_____, County Clerk
Dorothy E. White

Entered on transfer this _____ day of _____, 1981.
_____, County Clerk
Dorothy E. White