

VICINITY MAP  
OAK CLIFF ESTATES 4th ADDITION

Owner: Fleming Companies Inc.  
c/o James Tapp  
P.O. Box 1160  
Topeka, Ks. 66601

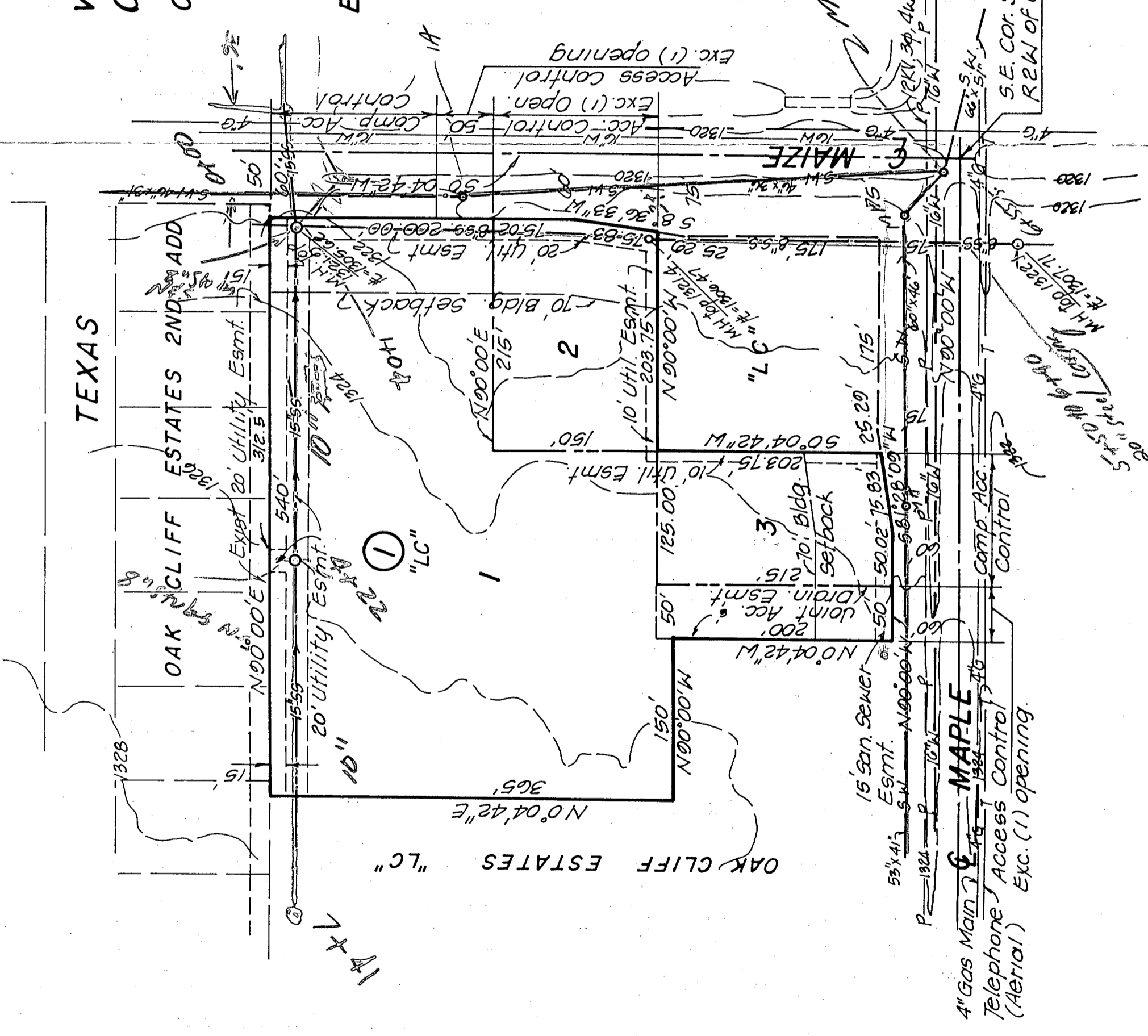
Engineer: P.E.C. p.a.  
1440 English  
Wichita, Ks. 67211

L1, M15 SWE

K 261  
E 261  
H 213

M9, SWI  
80703  
1984

B.M. Maize Rd & Maple - City of Wichita  
bench mark disc, 43.5' South & 52.7'  
east of centerline intersection of both  
Elev = 133.20 City Datum  
= 1320.60 M.S.L.



SCALE 1"=100'  
9-9-1988

4" Gas Main  
Telephone Access Control  
(Aerial) Exc. (1) opening.

S.E. Cor. Sec 19, T27S  
R2W of 6th P.M.

TEXAS

OAK CLIFF ESTATES 2ND ADD

10' Utility Esmt.

20' Utility Esmt.

30' Utility Esmt.

40' Utility Esmt.

50' Utility Esmt.

60' Utility Esmt.

70' Utility Esmt.

80' Utility Esmt.

90' Utility Esmt.

100' Utility Esmt.

110' Utility Esmt.

120' Utility Esmt.

130' Utility Esmt.

140' Utility Esmt.

150' Utility Esmt.

160' Utility Esmt.

170' Utility Esmt.

180' Utility Esmt.

190' Utility Esmt.

200' Utility Esmt.

1328

15

1555

1555

1555

1555

1555

1555

1555

1555

1555

1555

1555

1555

1555

1555

1555

1555

1555

1555

1555

1555

1555

1328

15

1555

1555

1555

1555

1555

1555

1555

1555

1555

1555

1555

1555

1555

1555

1555

1555

1555

1555

1555

1555

1555

1328

15

1555

1555

1555

1555

1555

1555

1555

1555

1555

1555

1555

1555

1555

1555

1555

1555

1555

1555

1555

1555

1555