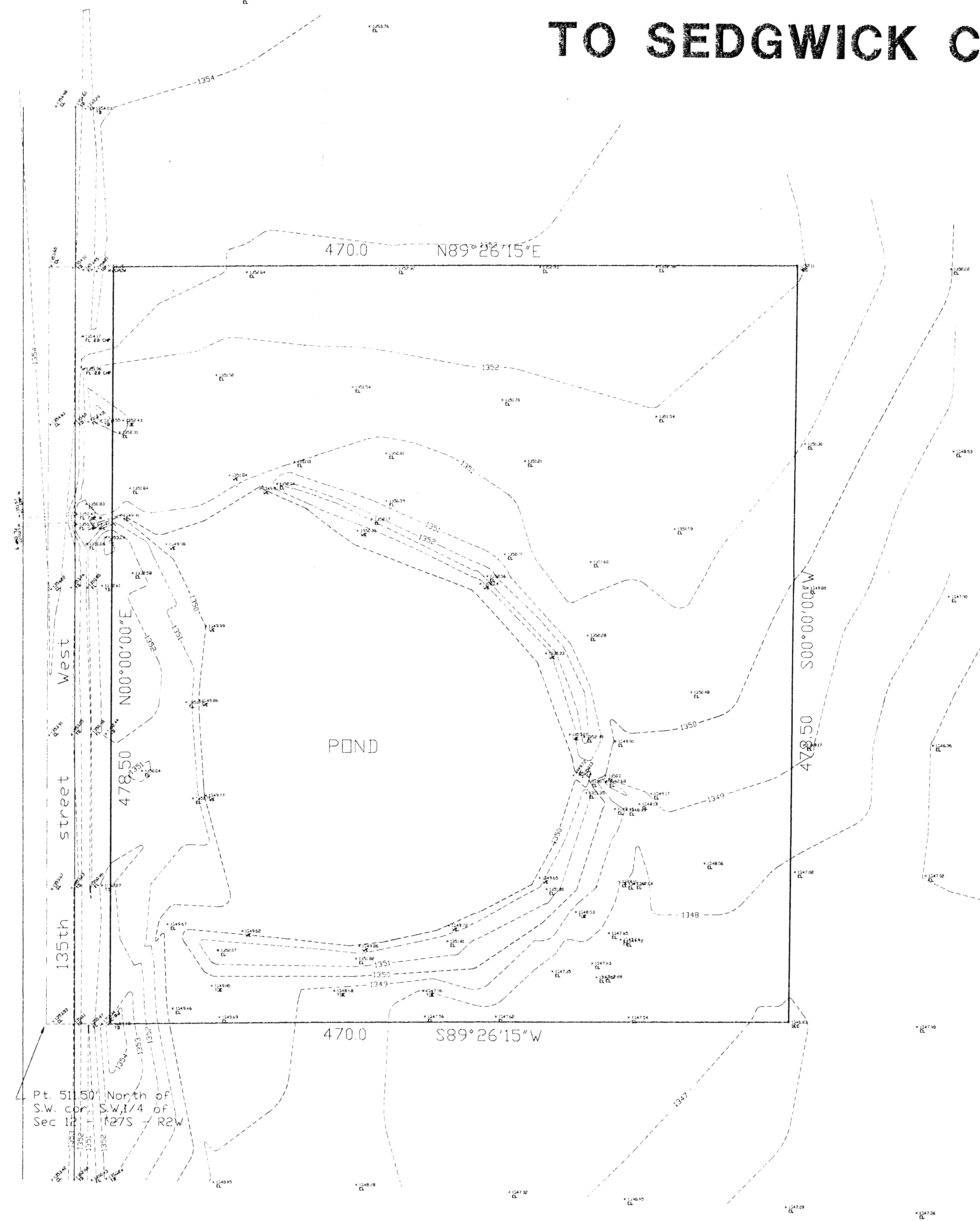


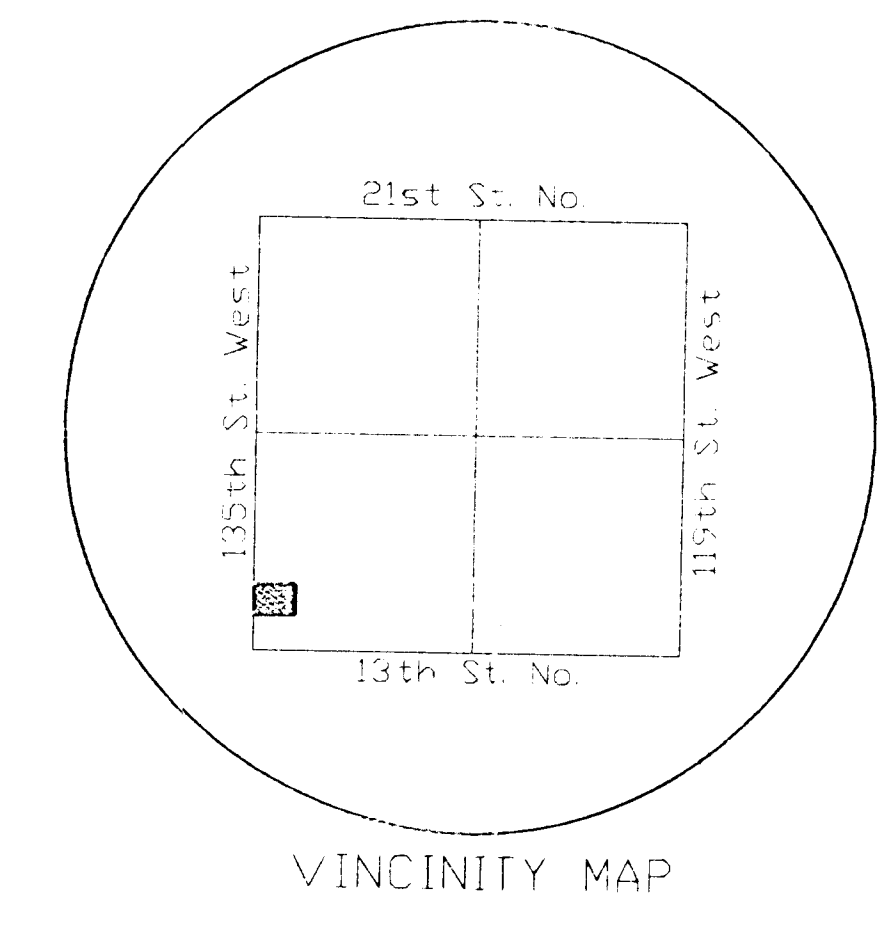
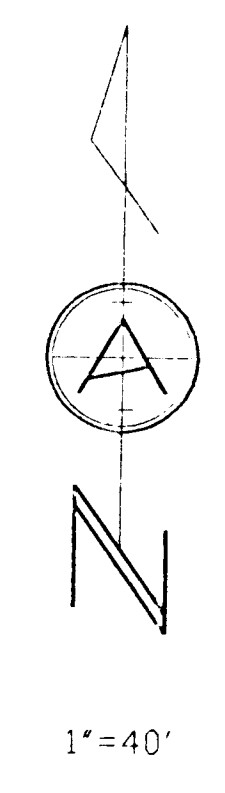
# GARCIA ADDITION TO SEDGWICK COUNTY, KANSAS

1021 E. WATERMAN  
SUITE 6  
WICHITA, KANSAS  
(316) 263-0082



### LEGEND

- iron pipe found
- 5/8" iron bar set
- fire hydrant
- power pole
- tele riser
- gas meter
- manhole
- light pole
- property line
- center line
- easement line
- fence
- contour line



Pt. S11.50' North of  
S.W. cor. S.W. 1/4 of  
Sec 12, T27S, R2W

NOTE: Telephone and Electric lines are on the west side of road right of way.

**ARMSTRONG LAND SURVEY, P.A.**

