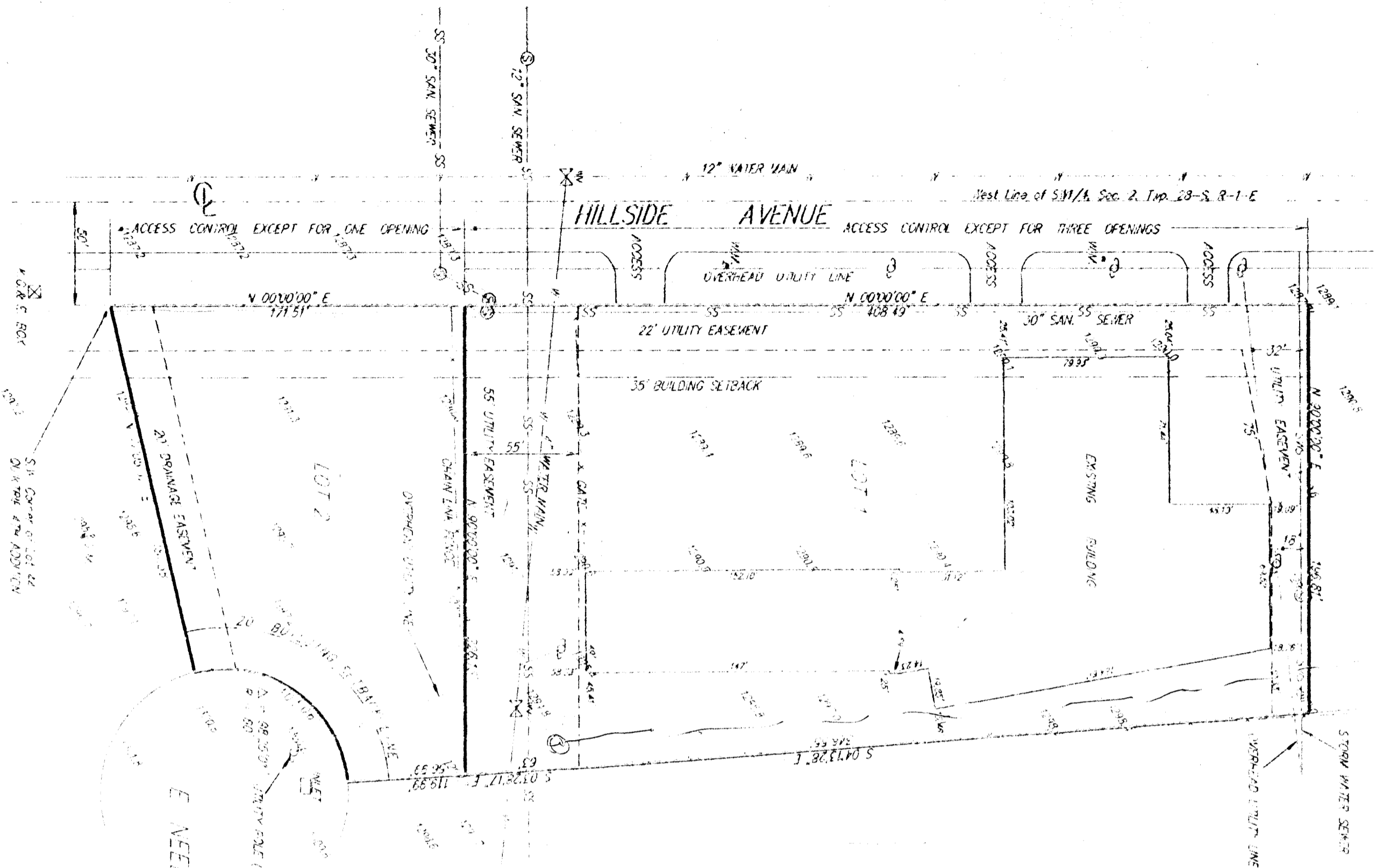


# SKETCH PLAT GARRISON TIRE ADDITION

WICHITA, SEDGWICK COUNTY, KANSAS.



SANITARY SEWER  
I-47, S-136  
STORM SEWER

LOTS 45, 46, 47, 48 and 49, Block 6, Pioneer Subdivision No. 2, Sedgwick County, Kansas and Lot 1, Block 4th Addition, Wichita, Sedgwick County, Kansas

**OWNERS:**

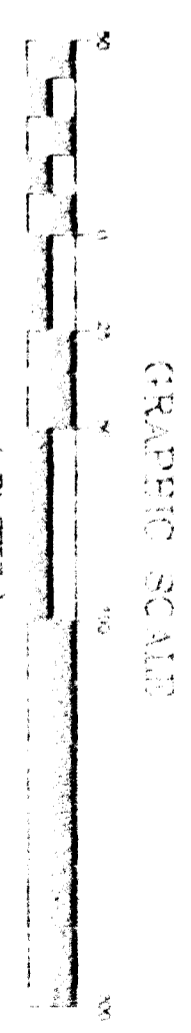
- Herta Colleen Garrison  
2335 S. South Ct  
Hickory, KS. 67207  
PH: (316) 884-3937
- Philo Ann Garrison  
437 Central Ln  
Dodge, KS. 67337  
PH: (316) 788-6137

**NOTES:**

Public easements and regulations being recorded by virtue of A.S.P. (2-57215)

CROSS SIZE OF PLAT  
19,452.8 SQ. FT. ± OR 2 7/8 ACRES ±

- LOT 1  
36,657.4 SQ. FT. ± OR 1.91 ACRES ±
- LOT 2  
102,521.1 SQ. FT. ± OR 2.36 ACRES ±



ELEVATION = N.T.D.

BENCH MARK  
CITY OF WICHITA S.W. 50 feet north of  
the corner of 31st St. S and W  
the east of the corner of  
Hillside Ave.  
Elev. 2097.09 M.D.

DATE: FEB. 20, 1988  
PROJECT NO. 0000048

**SPB**  
S. P. BOGGS  
SAVOY, RUGGLES & BOHM, P.A.  
ENGINEERING & SURVEYING