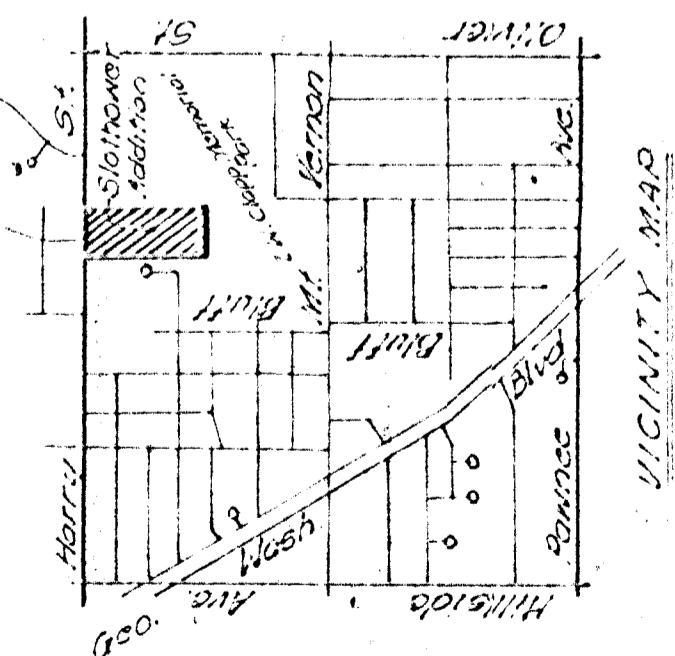


31'-187.08' Chiscol 12" Mak-Con Conc. Boss
 Meanderline Sign-SS. Harry St., 100'-1.41"
 All Terrace Dr.
 June 12, 1980



Owner-Specialties:
 Commonwealth-Slothower Theatre
 Corporation.

Note: Building Setbacks as per
 C.U.R. - D-9-100

**Maximum Number of Dwelling
 Units=570**
 Buildings, Screens, Signs and
 other appurtenances associated
 with the Drive in shall be removed
 prior to Redevelopment to Residential.

Notes: Match Exist'g
 Ground @ E.

Complete Vehicular
 Access Control

SLOTHOWER ADDITION DRAINAGE PLAN

PROFESSIONAL ENGINEERING CONSULTANTS, P.A.
 ENGINEERS
 WICHITA, KANSAS