

Randys Add. A.R.B. Addition

Rail's Addition

TERRACE DRIVE

Gas Main

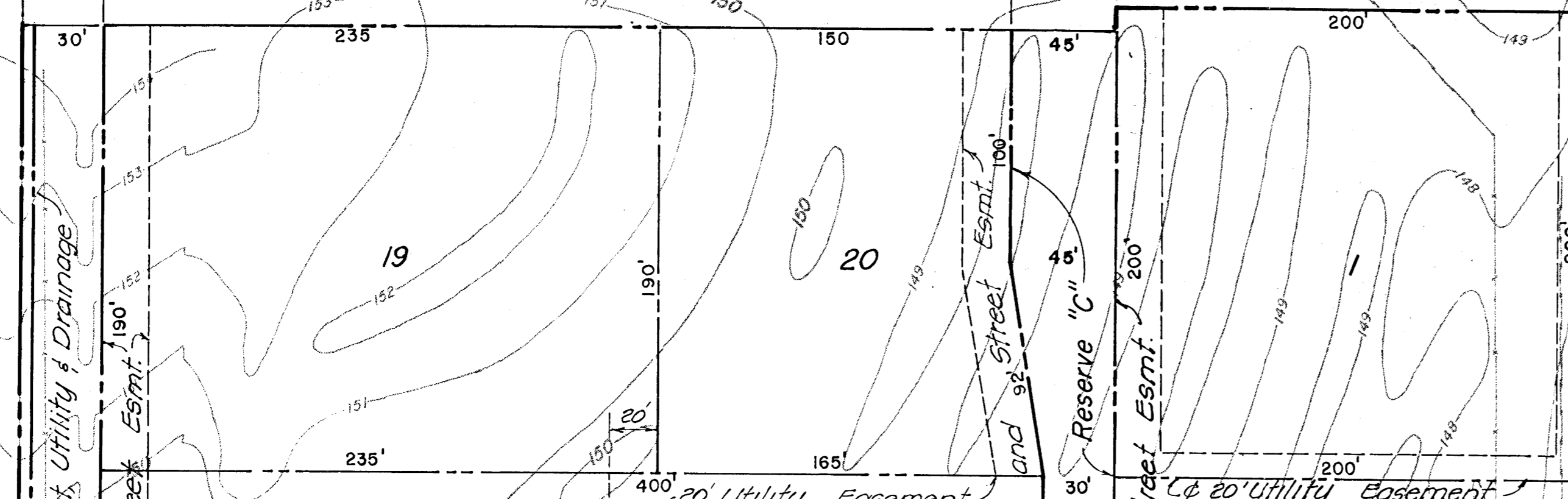
NE COR. W 1/2, NE 1/4
SEC. 35, T27S, R1E

AC. EXCEPT 10' OPEN. Water Main COMPLETE ACCESS CONTROL OPEN COMPLETE ACCESS CONTROL

665.65'
HARRY STREET
CONCRETE PAVEMENT

6" Buried Telephone 6" Water Main

"LC"



BLOCK I

R-6 (Exist.)

"A-A"

L. A. Clapp Memorial Golf Course

"LC" Wood Plaza Addition

"A-A" Conso/ver 1st Addition

Note: Bldg. Setback Lines as per CUP - DP 130 Existing structures are in process of demolition.

Reserve "A" drainage and Recreational facilities

Exist. Private San Sewer to be abandoned

Exist. 10' Pedestrian Access Esm't.

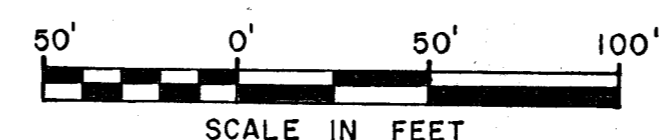
665.07'

"A-A"

L. A. Clapp Memorial Golf Course

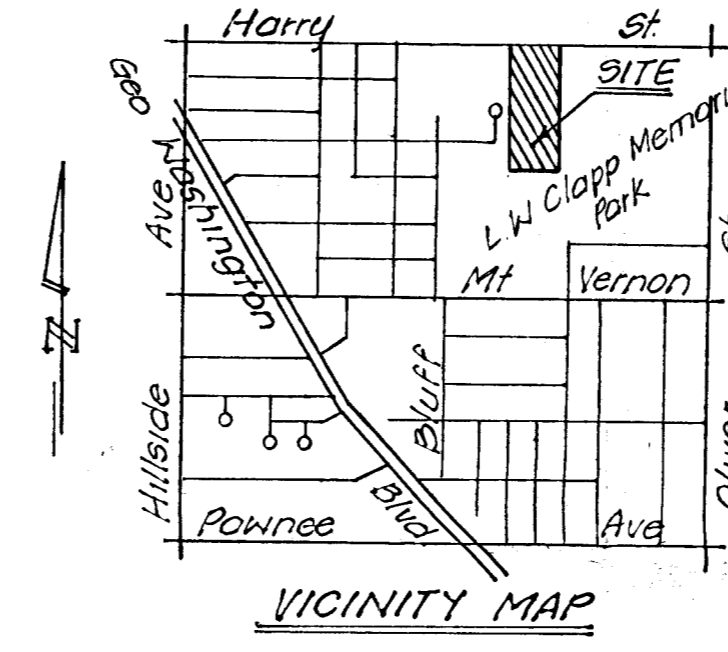
Install New San Sewer M.H.

Exist. 30" San Sewer



SCALE IN FEET
B.M. Chiseled "I" N.W. Cor. Conc. Base Meadowlark Sign - South side Harry St., 100' S. of N.E. Terrace Dr. E.L. = 151.08 (City datum).

Topography - Sep. 10, 1979



Preliminary Plat of GEORGETOWN Wichita, Sedgwick County, Kansas.

Owner: Kansas General Properties
c/o William E. Morin
555 N. Woodlawn Bldg 1
Wichita, Ks. 67208

Engineer: Professional Engineering Consultants, P.A.
1440 English
Wichita, Ks. 67211

Date: Aug. 16, 1983

PROFESSIONAL ENGINEERING CONSULTANTS, P.A.
ENGINEERS
WICHITA, KANSAS
Designed by _____
Job No. 82522-1
Drawn by E.S. Date 8-16-83