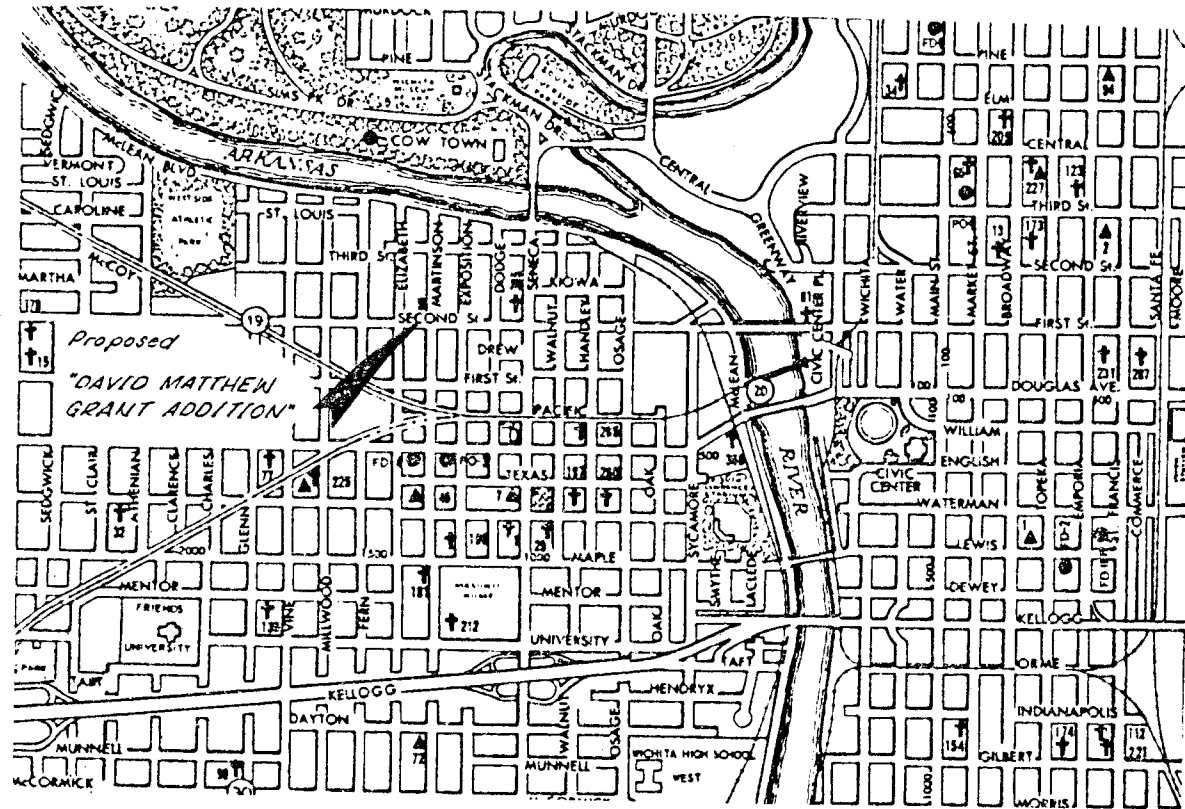


VICINITY MAP
 Part of NE 1/4 Sec. 19, T27S, R1E



Owners / Subdividers:

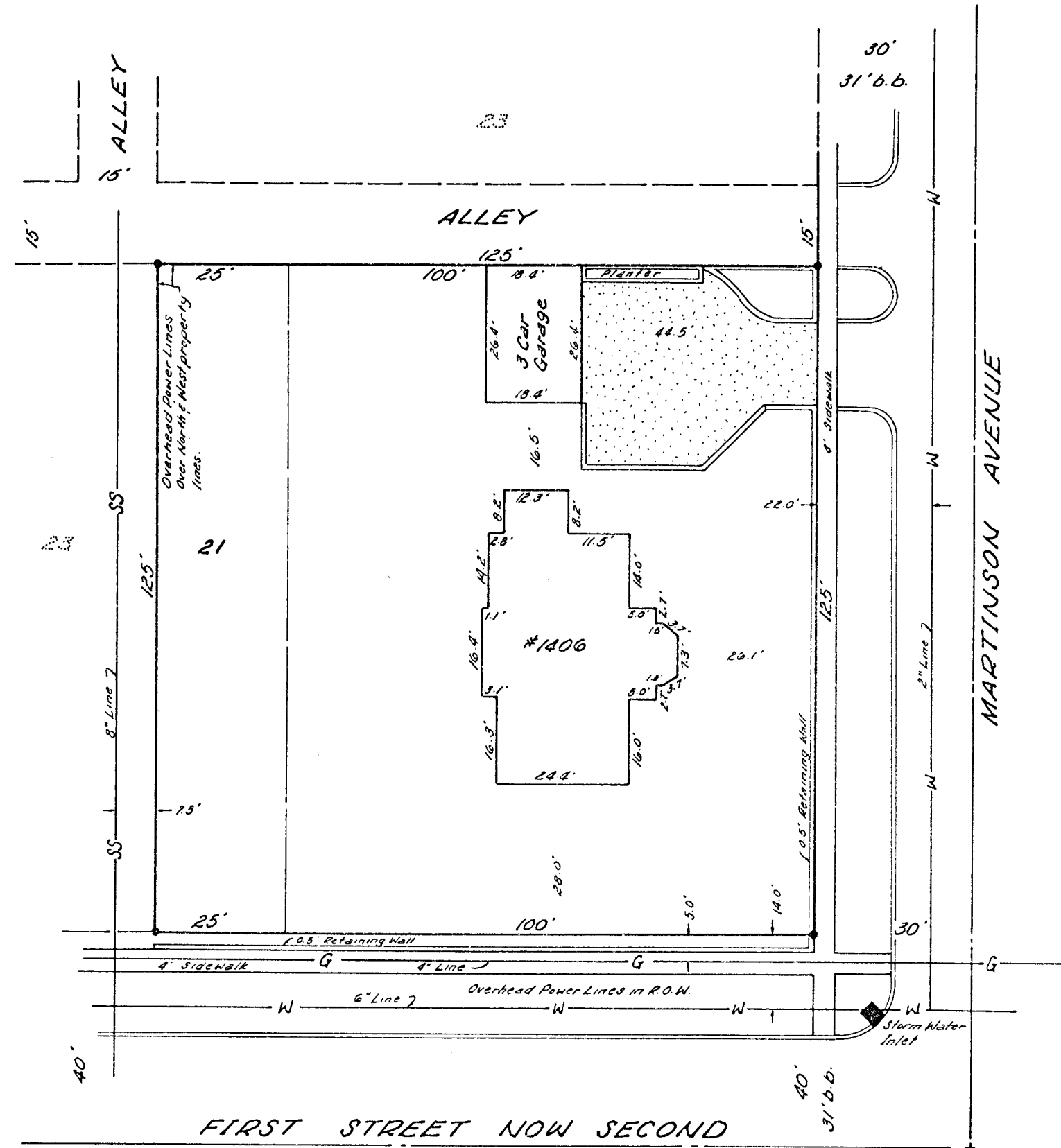
Kelly C. & Cathy D. Grant
 1406 W. Second Street
 Wichita, Kansas 67203



NOT TO SCALE
 1 August, 1986

Proposed Plat Name:

"DAVID MATTHEW
 GRANT ADDITION";
 Wichita, Sedgwick
 County, Kansas.



FILE #5861920



SCALE: 1"=25'