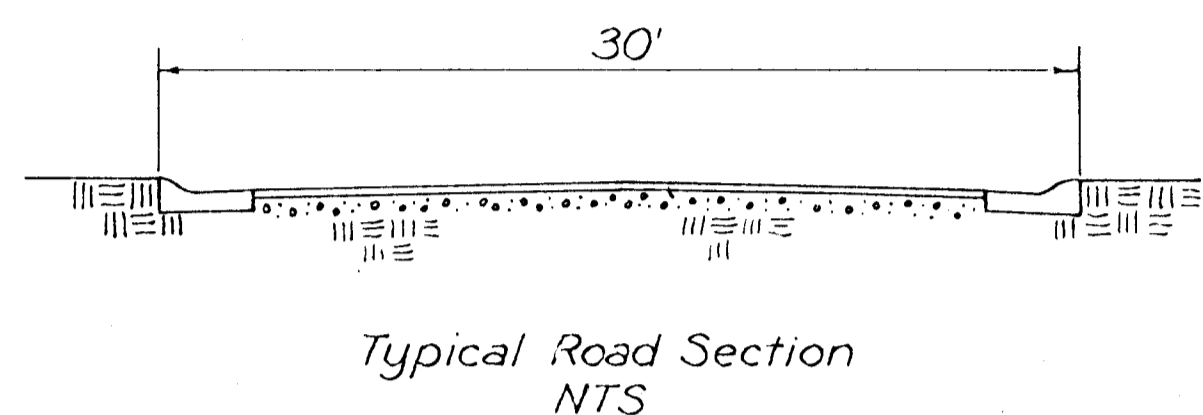
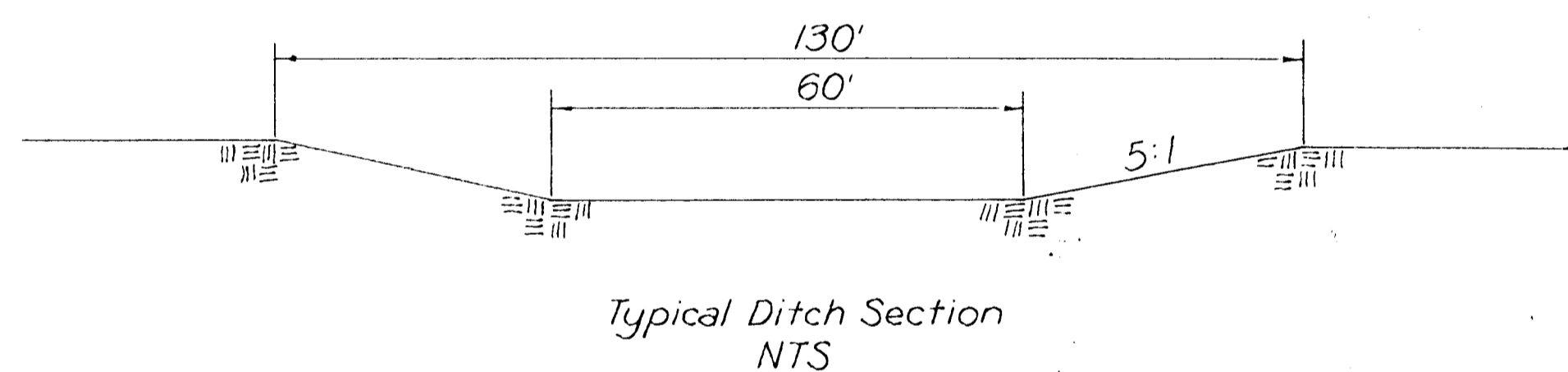


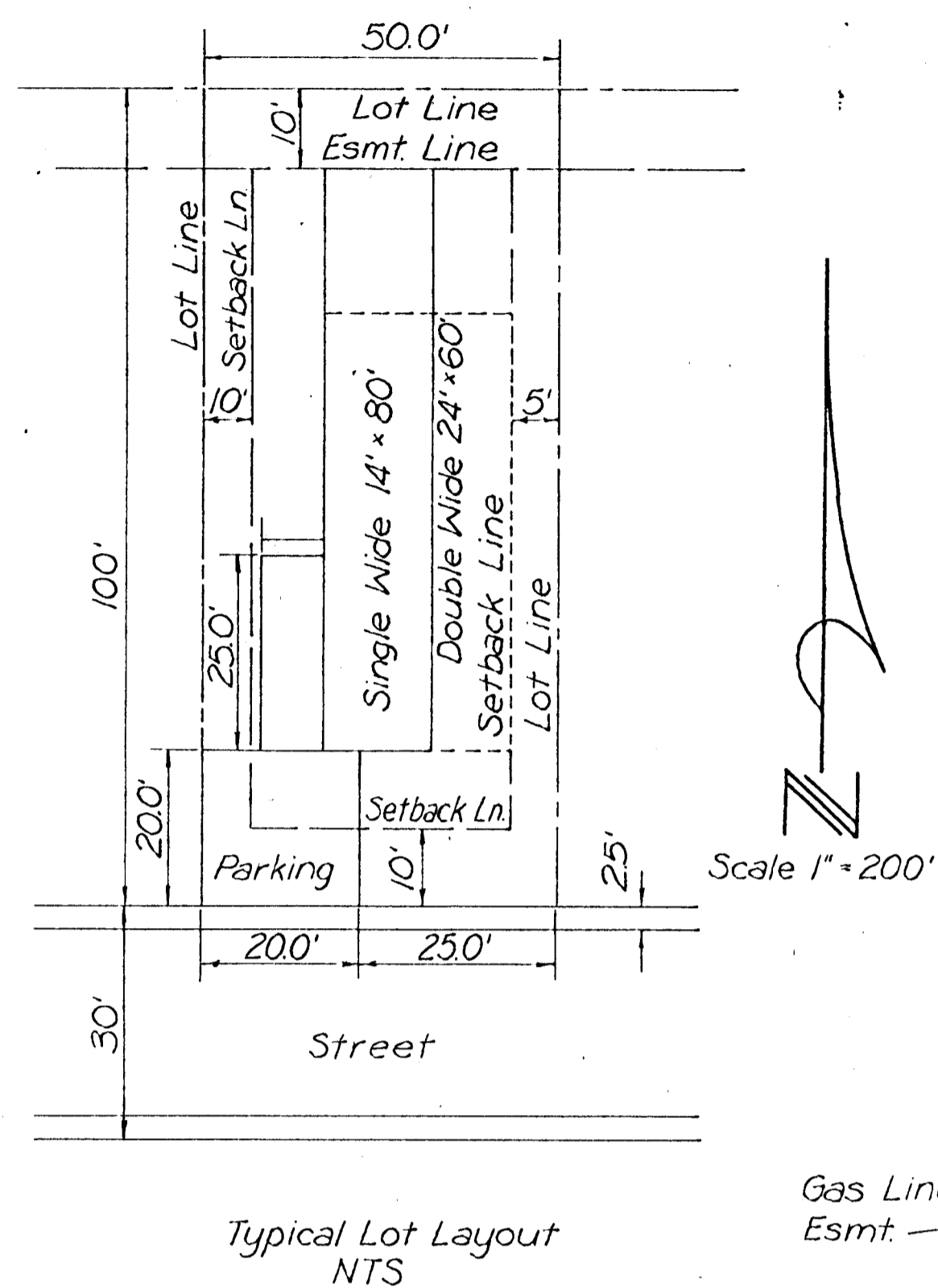
DEVELOPMENT PLAN FOR GREEN ACRES II WICHITA, SEDGWICK COUNTY, KANSAS



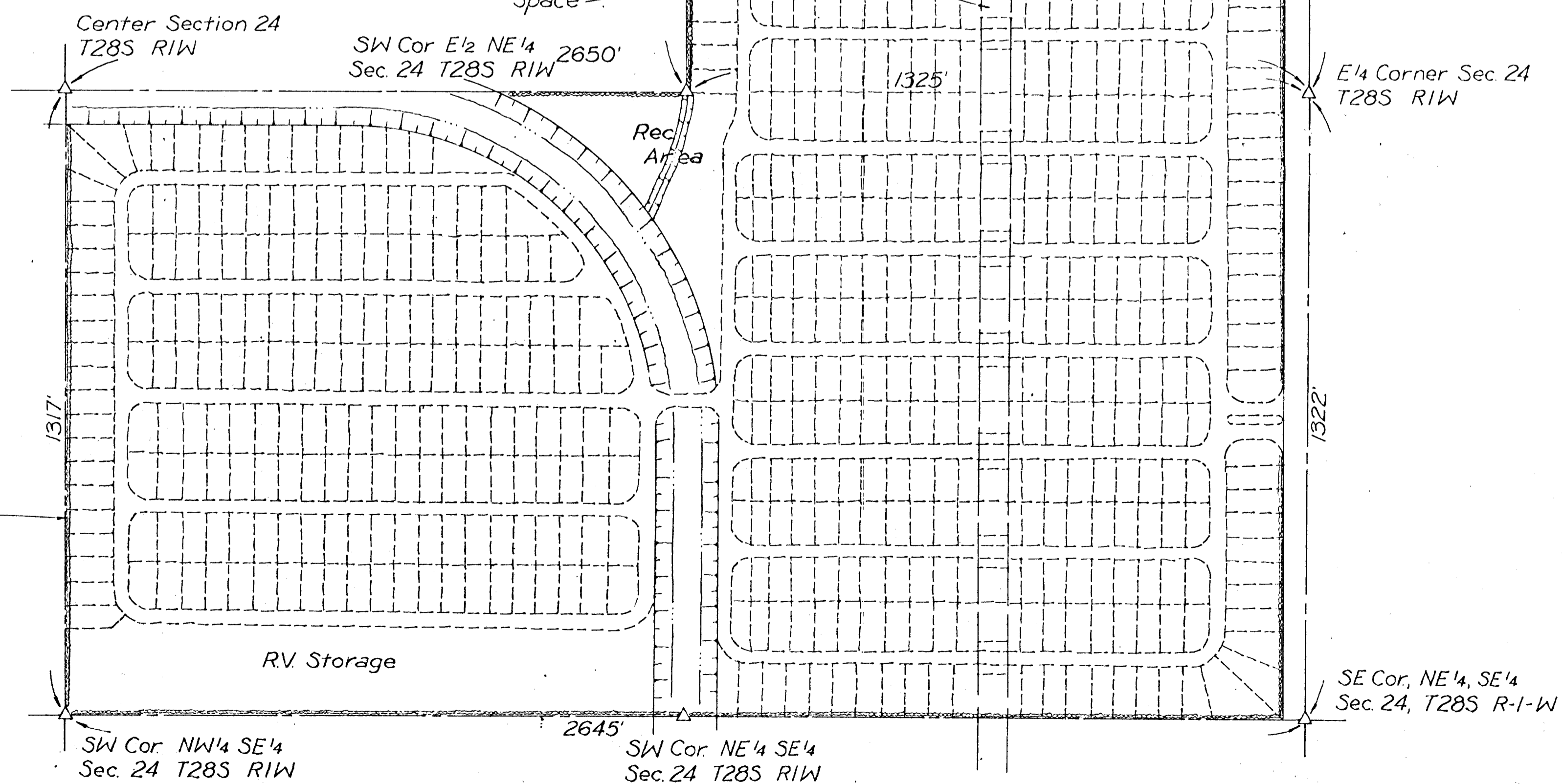
CU 263



Total Available Acreage	160
Less Light Commercial Acreage	10
Gross Mobile Home Site Acreage	150
Mobile Home Sites	920
Density	6.13



- Gas Line Esmt.
- Drainage Swale
- Typical Visitor Parking
- Typical Open Space



Description:
The East One-Half (E 1/2) of the Northeast Quarter (NE 1/4) of Section 24 and the North One-Half (N 1/2) of the Southeast Quarter (SE 1/4) of Section 24, all in Township 28 South, Range One West, in Sedgwick County, Kansas