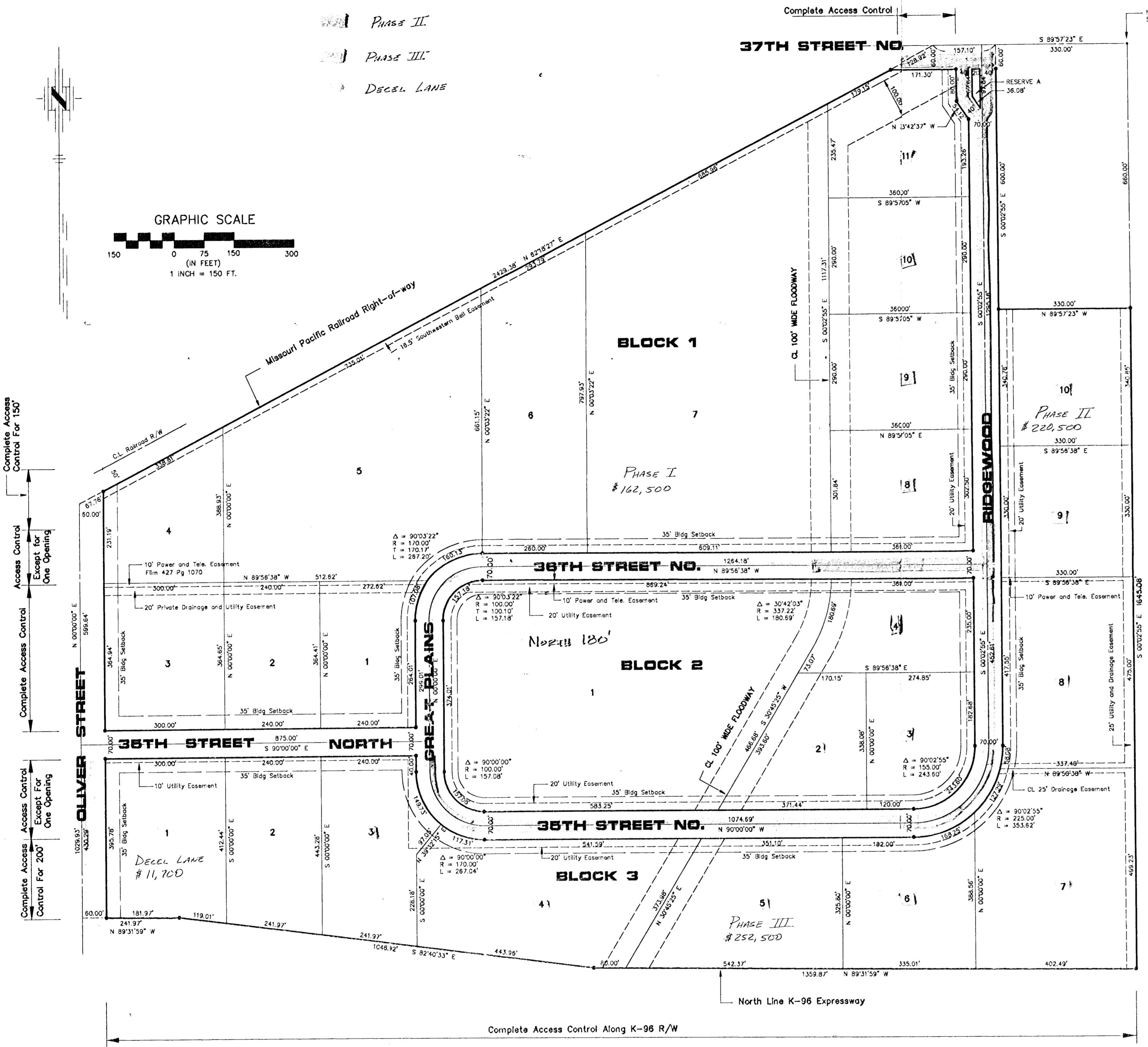
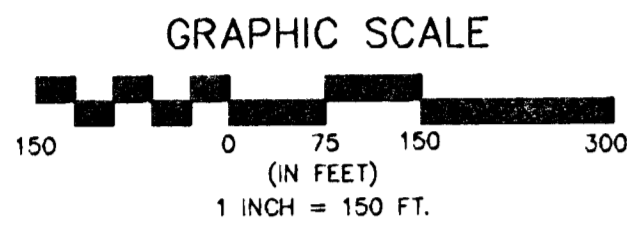


PHASE I

PHASE II

PHASE III

DECEL LANE



STATE OF KANSAS, COUNTY OF SEDGWICK: ss.

I, Kenny E. Hill, being a duly licensed Land Surveyor in said County and State, do hereby certify that I have been in responsible charge of surveying and plotting "GREAT PLAINS BUSINESS PARK 2ND ADDITION" to Wichita, Kansas, being described as follows:

A replat of North Oliver Industrial Park Addition and Great Plains Business Park Addition being more particularly described as follows:

Commencing at the Northeast corner of the Northwest Quarter (NW 1/4) of Section 36, Township 26 South, Range 1 East of the 6th P.M., Sedgwick County, Kansas; thence N 89° 57' 23" W along the North line of said Northwest Quarter (NW 1/4) for a distance of 330.00 feet to the point of beginning; thence S 0° 02' 55" E for a distance of 660.00 feet to the Southeast corner of Town and Country Christian Church Addition; thence S 89° 57' 23" E for a distance of 330.00 feet to the Southeast corner of Town and Country Christian Church Addition; thence S 0° 02' 55" E for a distance of 1645.08 feet on the East line of the Northwest Quarter (NW 1/4) of said Section 36 to a point on the North line of the K-96 Expressway Right-of-way; thence N 89° 31' 59" W for a distance of 1359.87 feet on the North line of said Expressway; thence N 82° 40' 33" W for a distance of 1048.92 feet on the North line of said Expressway; thence N 89° 31' 59" W for a distance of 241.97 feet on the North line of said Expressway extended to a point on the West line of the Northwest Quarter (NW 1/4) of said Section 36; thence N 0° 00' 00" E for a distance of 1029.93 feet; thence N 62° 18' 27" E along the South line of the Missouri Pacific Railroad Right-of-way for a distance of 2429.38 feet to a point on the North line of the Northwest Quarter (NW 1/4) of said Section 36; thence S 89° 27' 23" E for a distance of 157.10 feet to the point of beginning, containing 103.96 acres more or less.

Dated this \_\_\_\_\_ day of \_\_\_\_\_, 1991.

Kenny E. Hill, L.S.

KNOW ALL MEN BY THESE PRESENTS:

That we, the undersigned, have caused the land described in the Surveyor's Certificate to be platted into lots, blocks, streets and a reserve. The streets are hereby dedicated to and for the use of the public. Easements are hereby granted as indicated for the construction and maintenance of drainage and utilities. Reserve A is for landscaping, entry monuments and utilities. The Reserve is to be owned and maintained by a property owners association consisting of all of the owners of property in this addition. All abutters' rights of access to or from Oliver Street, 37th Street North and K-96 Expressway over and across the North line of Lot 11, Block 1, the South line of Lots 1 through 7, Block 3, the West line of Lot 1, Block 3, except for one opening in the North 195 feet, the West line of Lot 3 and 4, Block 1, except for one opening to Lot 4 being a minimum of 150.00 feet south of the centerline of the Missouri Pacific Railroad right-of-way are hereby granted to the appropriate governing body. Easements and other public reservations are hereby vacated to conform to those shown on this plat by virtue of KSA 12-512(b) as amended.

The City of Bel Aire, Kansas

Great Plains Ventures Inc.

Mayor

Kenneth W. Rix, Vice-President

Attest: City Clerk

STATE OF KANSAS, COUNTY OF SEDGWICK: ss.

This instrument was acknowledged before me on this \_\_\_\_\_ day of \_\_\_\_\_, 1991, by Kenneth W. Rix.

Notary Public

My Appointment Expires:

This plat of GREAT PLAINS BUSINESS PARK 2ND ADDITION to Wichita, Sedgwick County, Kansas has been submitted to and approved by this WICHITA-SEDGWICK COUNTY METROPOLITAN AREA PLANNING COMMISSION, Wichita, Kansas.

Dated this \_\_\_\_\_ day of \_\_\_\_\_, 1991.

WICHITA SEDGWICK COUNTY METROPOLITAN AREA PLANNING COMMISSION

George D. Sherman, Chairman

Marvin S. Krout, Secretary

This plat approved and all dedications shown hereon accepted by the City Council of the City of Wichita, Kansas, this \_\_\_\_\_ day of \_\_\_\_\_, 1991.

Bob Knight, Mayor

Pat Burnett, Deputy City Clerk

Entered on transfer record this \_\_\_\_\_ day of \_\_\_\_\_, 1991.

Don Wright, County Clerk

This is to certify that this instrument was filed for record in the Register of Deeds Office at \_\_\_\_\_, A.M.-P.M. on the \_\_\_\_\_ day of \_\_\_\_\_, 1991.

Pat Kettler, Register of Deeds

Ed Resa, Chief Deputy

# GREAT PLAINS BUSINESS PARK 2ND ADDITION