

CONSTRUCTION PLANS
 SANITARY SEWER EXTENSIONS
GREAT PLAINS BUSINESS PARK 2ND ADDITION
 TO
THE CITY OF WICHITA, KANSAS
PHASE 2

LATERAL _____, MAIN _____, SANITARY SEWER # _____

MICHAEL E. LINDEBAK, P.E. - CITY ENGINEER
 PROJECT NO. XXX-XXXX
 OCA NUMBER XXXXXX

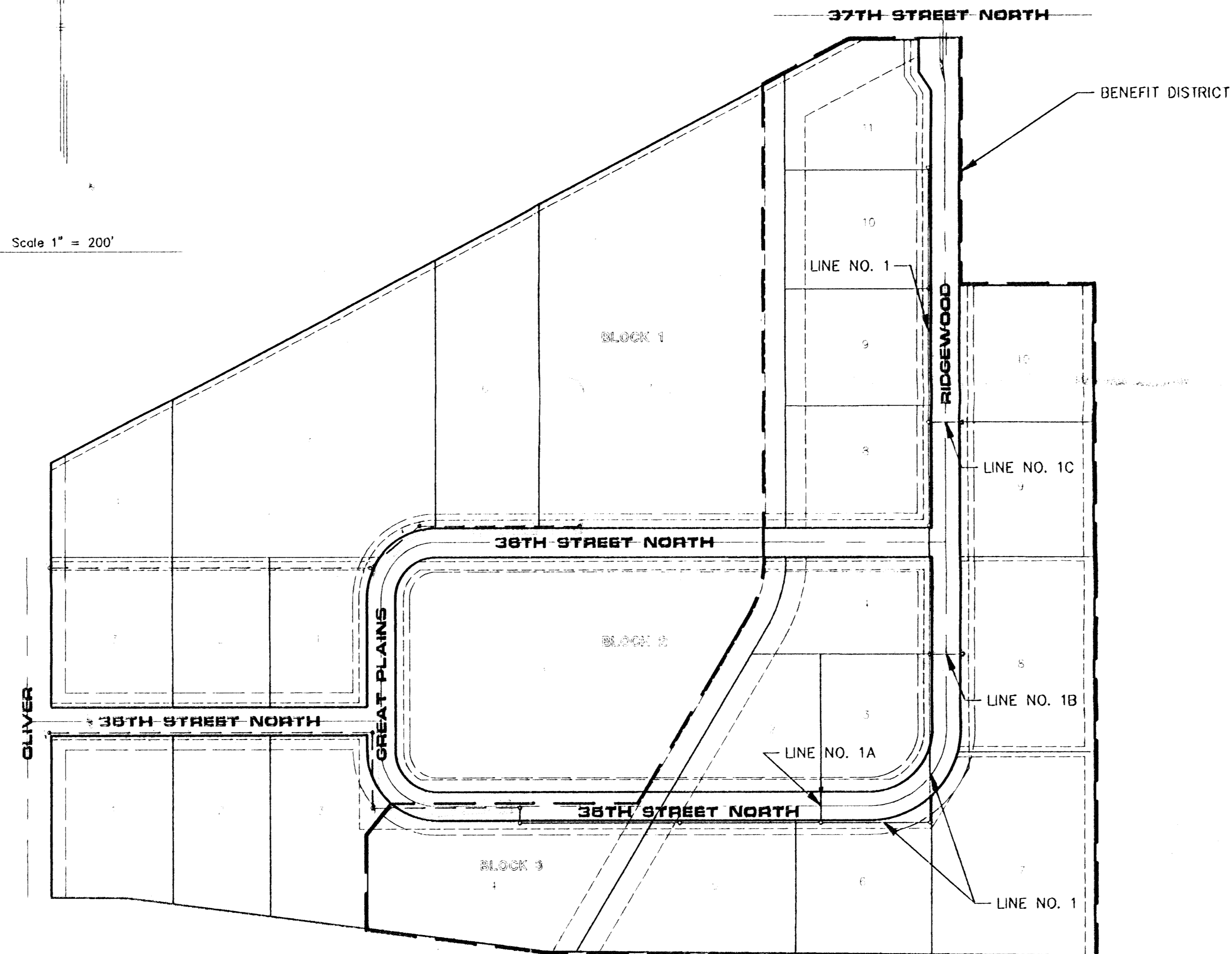
GENERAL NOTES:

1. Existing utility lines and their location, as shown on the plans, represent the best information obtainable for design. The contractor will be required to work around existing utilities within the right-of-way which do not conflict with proposed construction.
2. Rubble from the removal of miscellaneous structures and excess excavation which is to be wasted shall be disposed of on sites to be provided by the Contractor. These sites shall be approved by the Engineer as to suitability, appearance and site location. Locations that, in the opinion of the Engineer, will leave an unsightly appearance will not be approved.

 All disposal sites must be approved by the Kansas Department of Health and Environment. Material either stockpiled or disposed of in a flood plain would require a Kansas State Board of Agriculture permit. Any material dumped in waters of the United States or wetlands is subject to U.S. Corps. of Engineers permitting regulations. Any material buried or stockpiled beyond approved construction limits would require additional archaeological investigations unless buried in a previously approved borrow location.
3. The Contractor shall be responsible for maintaining continuous flow of sewage through construction. Contractor's proposed method for maintaining sewage flow shall be approved by the Engineer. Cost of maintaining flow of sewage through construction will not be paid for directly and this cost shall be considered as subsidiary to the other pay items of the work.
4. The Contractor shall be responsible for preserving property irons. The Contractor will be required to re-establish any property irons which are damaged or destroyed by his construction operations. Such irons shall be re-established by a licensed land surveyor in accordance with state laws.
5. Trees and shrubs in public right-of-way which are in direct conflict with proposed new construction shall be removed by the Contractor with the Engineer's approval. Trees and shrubs which are not in direct conflict with the proposed new construction shall be saved and protected from damage.
6. Temporary seeding (Rye Grass) shall be applied at a rate of 200 lbs. per acre at all disturbed areas.

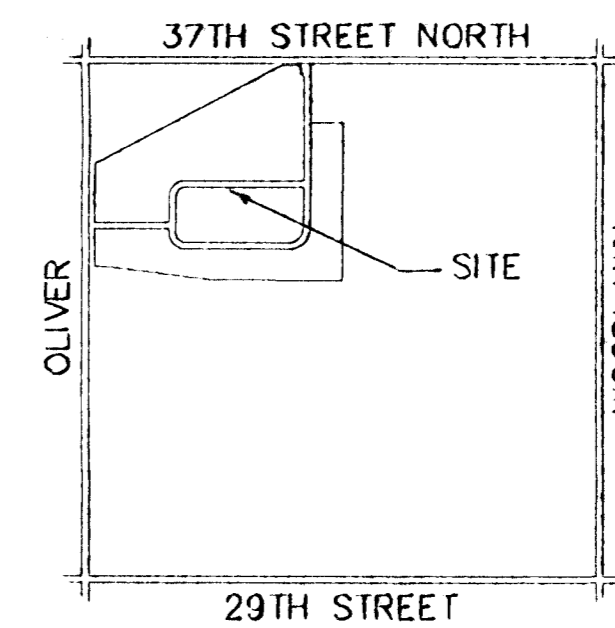


Scale 1" = 200'



INDEX

TITLE SHEET	SHEET 1
LINE NO. 1	SHEET 2-3
LINE NO. 1 & 1-A	SHEET 4
LINE NO. 1-B & 1-C	SHEET 5
TYPE "P" MANHOLE	SHEET 6
COORDINATE POINTS LIST	SHEET 7
EASEMENT GRADING PLAN	SHEET 8
GREAT PLAINS BUSINESS PARK 2ND ADDITION PLAT	SHEET 9



LOCATION MAP
No Scale

BENCH MARKS

(City of Wichita Datum)

1. City of Wichita BM 39' N. and 44' E. of Quarter Section Corner. Elev. = 193.663 City of Wichita.

OCTOBER 1999

PLANS PREPARED
BY

