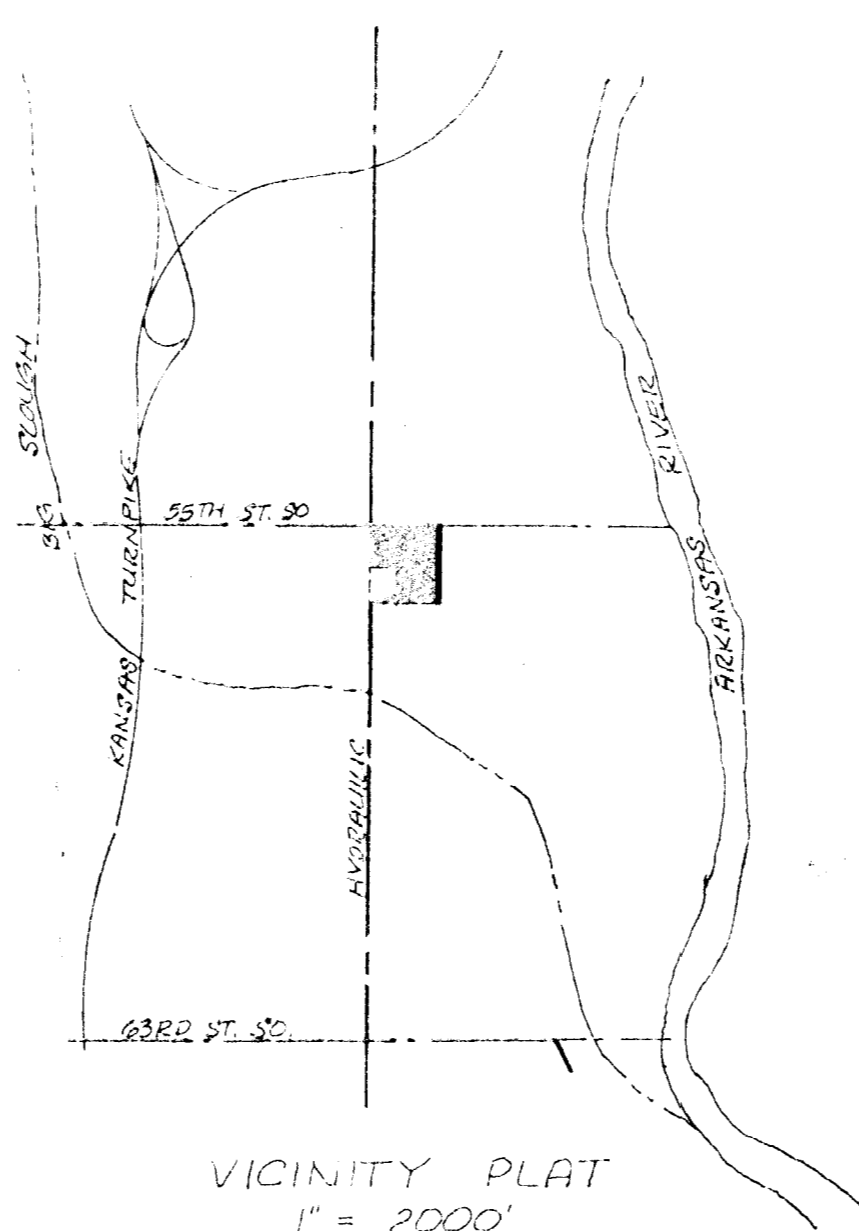


1" = 100'  
Elev. = City Datum  
3/23/81

BENCH MARK:  
City Standard Disc. 44' W. & 30' S.  
of 55th St. St. & Hyd.  
Elev. = 76.57 City Datum

NOTE:  
Refer to approved "GRIFFIN PARK"  
Community Unit Plan DP-120  
Re building Set-backs



Note - Remove & Replace  
21" RCP w/ 30" CIP  
set flow in 70's  
Replace app Mat.  
Regrade ditch  
as & OS.

UNPLATTED

PRELIMINARY PLAT  
GRIFFIN PARK

THE NORTH 731 FEET OF  
THE WEST 21 ACRES OF THE N<sup>1</sup>/<sub>2</sub> OF  
THE NW<sup>1</sup>/<sub>4</sub> OF SEC. 27, TWP. 28-S, R-1-E  
OF THE 6TH. P.M., SEDGWICK COUNTY,  
KANSAS, EXCEPT THE SOUTH 278 FEET  
OF THE NORTH 671 FEET OF THE WEST  
242 FEET THEREOF.

JACK L. GRIFFIN

DRAINAGE  
PLAN 2/82

