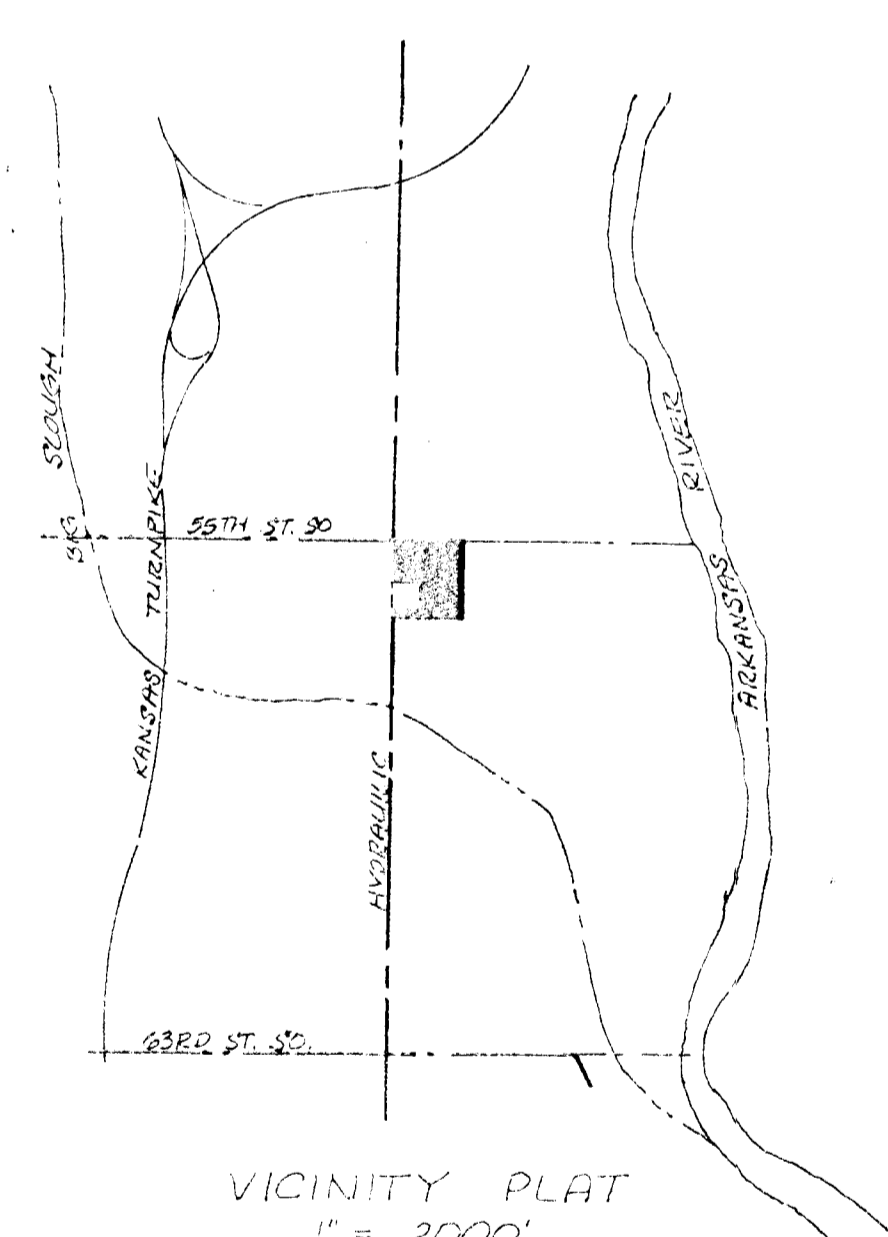


N  
1" = 100'  
Elev. = City Datum  
3/23/81

BENCH MARK:  
City Standard Disc. 44' W. & 30' S.  
of 55th St. So. & Hyd.  
Elev. = 76.57 City Datum

NOTE:  
Refer to approved 'GRIFFIN PARK'  
Community Unit Plan DP-120  
for building Set-backs



PRELIMINARY PLAT  
GRIFFIN PARK  
THE NORTH 731 FEET OF  
THE WEST 21 ACRES OF THE N 1/2 OF  
THE NW 1/4 OF SEC. 27, TWP. 28-S, R-1E  
OF THE 6TH. P.M., SEDGWICK COUNTY,  
KANSAS, EXCEPT THE SOUTH 278 FEET  
OF THE NORTH 671 FEET OF THE WEST  
242 FEET THEREOF.

JACK L. GRIFFIN

**DRAINAGE  
PLAN** 2/82