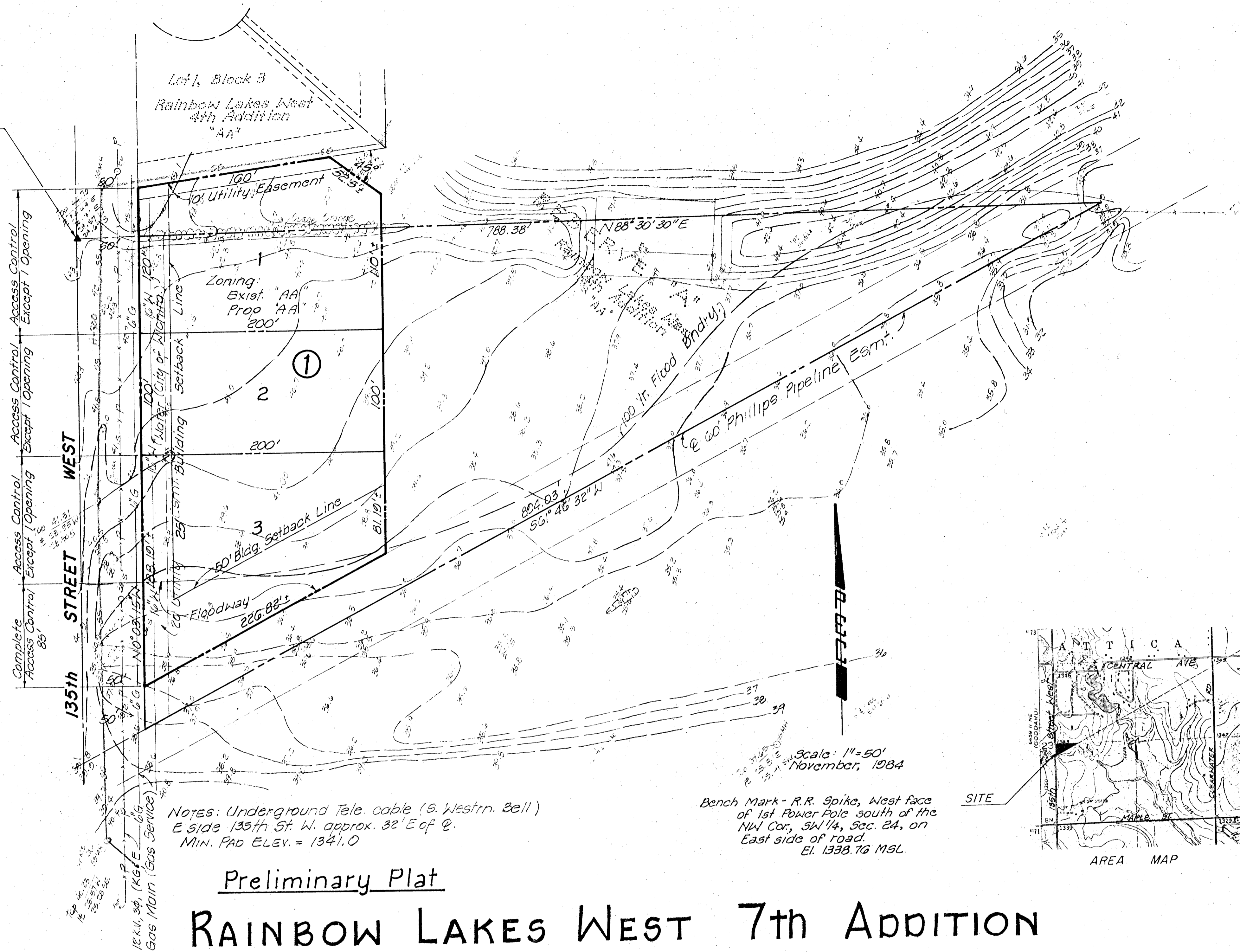
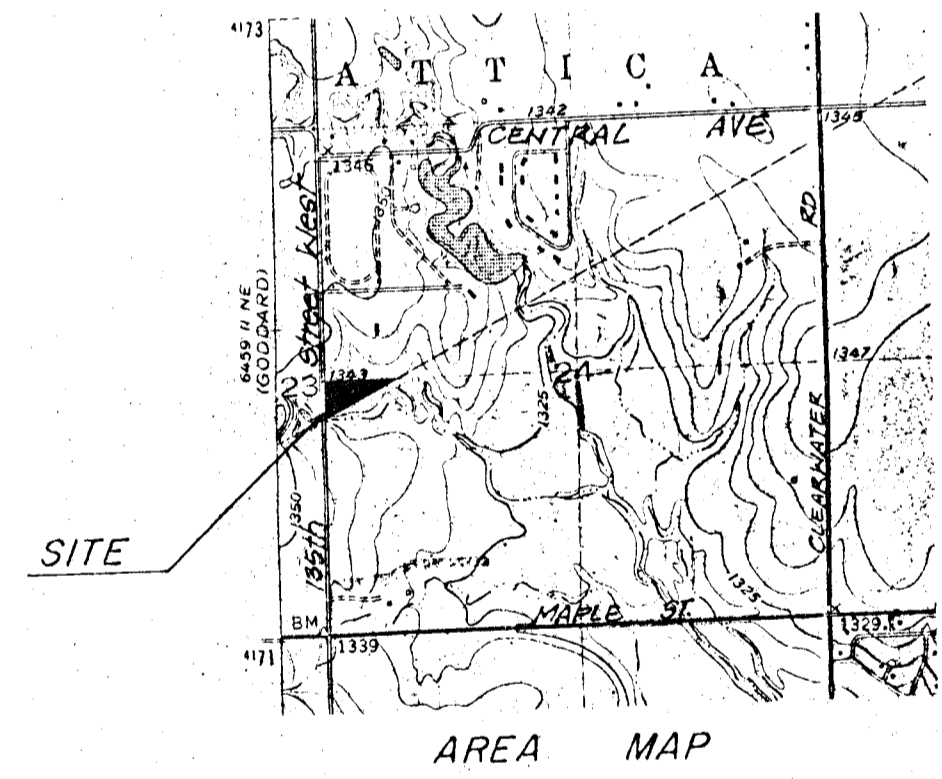


NW Cor. 34 1/4,
Sec. 24, T27S,
R24W, 6th PM



Notes: Underground Tele cable (S. Westrn. Bell)
E side 135th St. W. approx. 32' E of C.
MIN. PAD ELEV. = 1341.0

Scale: 1" = 50'
November, 1984
Bench Mark - R.R. Spike, West face
of 1st Power Pole south of the
NW Cor. 34 1/4, Sec. 24, on
East side of road.
El. 1338.76 MSL.



Preliminary Plat
RAINBOW LAKES WEST 7th ADDITION

Owner: Stan Bell
360 N. 135th Street West
Wichita, Kansas 67235

Engineer: Professional Engineering Consultants, PA.
1440 E. English
Wichita, Kansas 67211