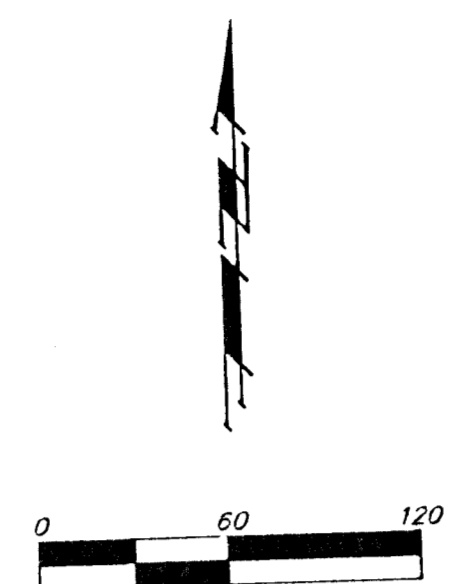
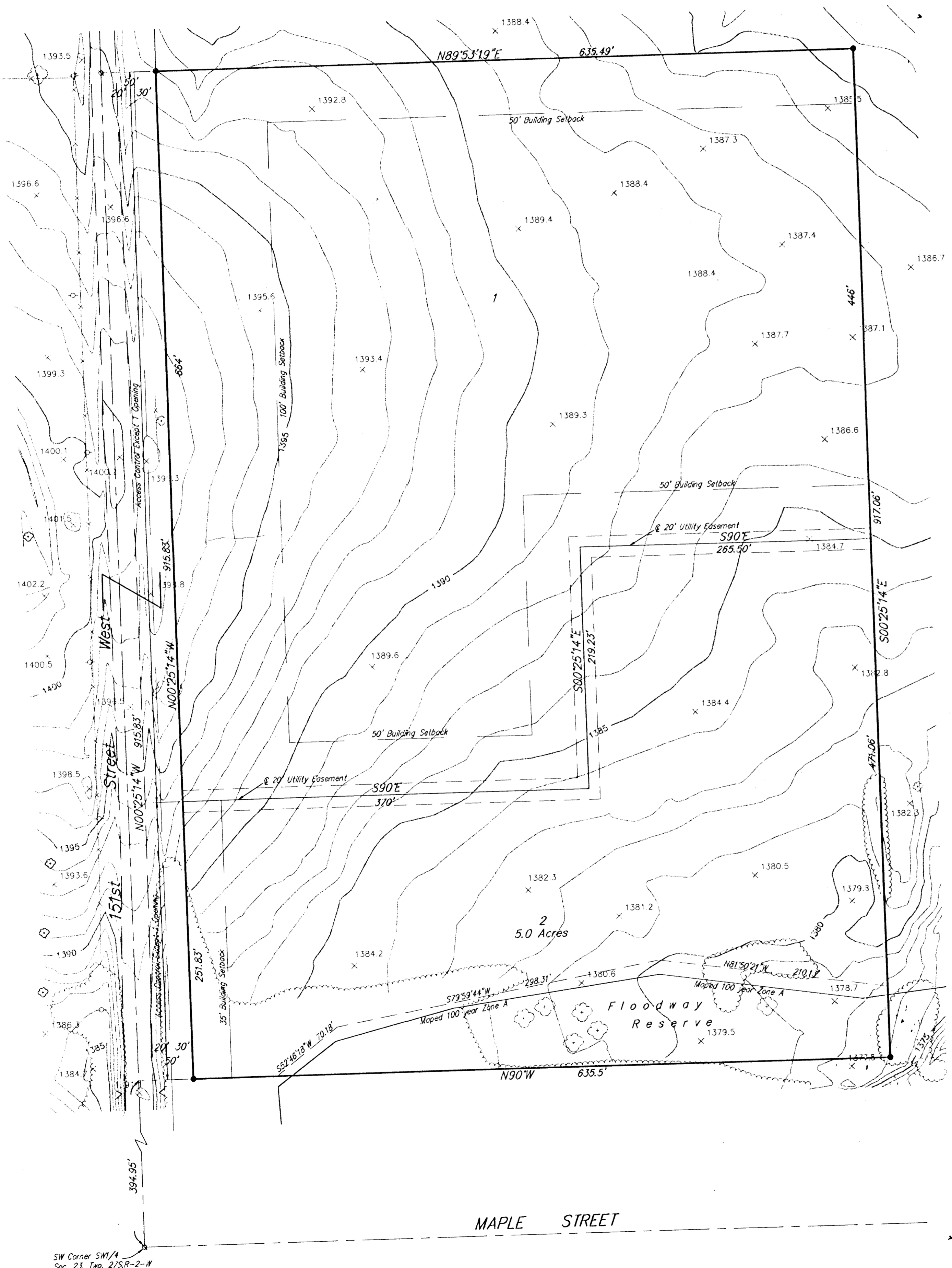


PRELIMINARY PLAT
RAMSAY FARMS ADDITION
 SEDGWICK COUNTY, KANSAS



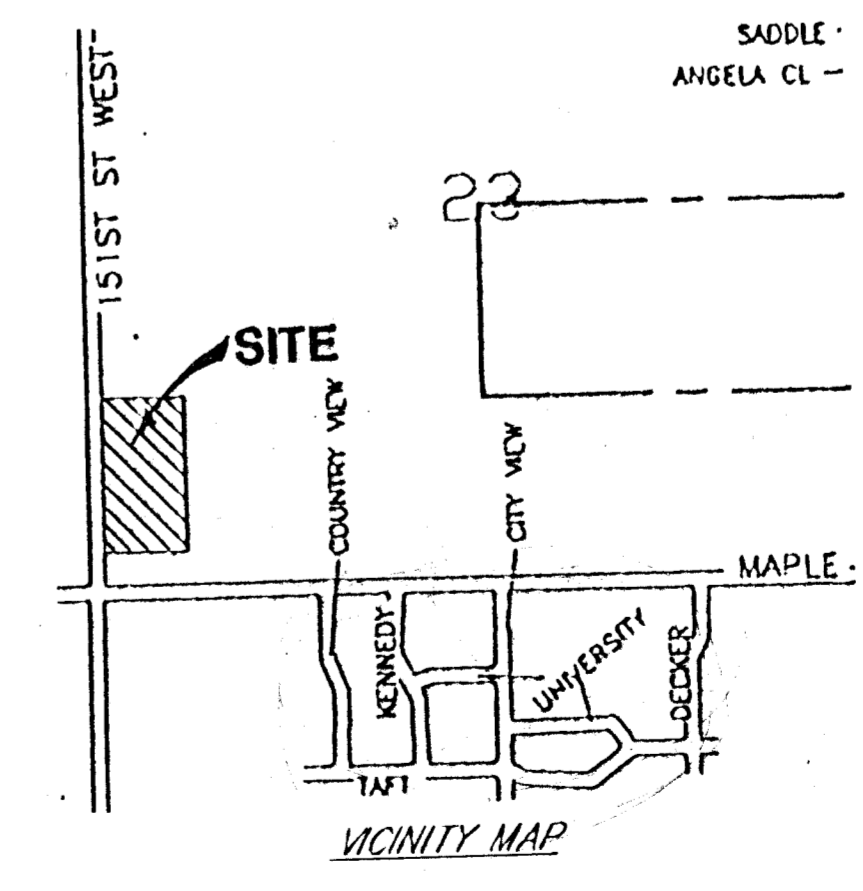
- = #4 BAUGHMAN REBAR (SET)
- = 3/4" IRON PIPE (FOUND)
- = UTILITY POLE

Lot	Minimum Building Pad Pad Elev.
2	1381.0

OWNER
 Ramsay Farms Inc.
 C/O Diane MacNair
 9103 W. 18th Street
 Wichita, Ks 67212

LEGAL
 A tract in the SW 1/4, of Sec. 23, Twp. 27-S,
 R-2-W of the 6th P.M., Sedgwick County, Kansas,
 and described as follows: Beginning at the SW Corner
 of said SW 1/4; thence N00°25'14"W along the
 west line of said SW 1/4, 394.95 feet to the point
 of beginning; thence continuing N00°24'14"W, along
 said west line, 915.83 feet; thence N89°53'19"E,
 635.49 feet; thence S00°25'14"E, 917.06 feet;
 thence N90°W, 635.50 feet to the point of
 beginning.

BENCHMARK
 "□" Cut on W. Hubguard of
 R.C.B.C. at W 1/4 Cor. Sec. 25
 Elev. = 1392.65



SW Corner SW 1/4
 Sec. 23, Twp. 27S-R-2-W