

Drainage Plan GUY'S ADDITION

WICHITA, KANSAS

State of Kansas) S.S. We, Baughman Company, P.A. Surveyors in Sedgewick County, Kansas, do hereby certify that we have surveyed and platted "GUY'S ADDITION", Wichita, Kansas and that the accompanying plat is a true and correct exhibit of the property surveyed, described as the west 10 Acres (328.20 ac.) of the west 1/4 of the east 26 2/3 Acres (874.84 ac.) of the S 1/2 of the S 1/4 of Sec. 29, Twp. 21-S, R-2-E, Sedgewick County, Kansas.

Baughman Company, P.A.

Date _____ Surveyor
William L. Karber

Know all men by these presents that we, the undersigned, have caused the land described in the surveyors certificate to be platted into Lots, Blocks and Streets to be known as "GUY'S ADDITION", Wichita, Kansas. The easements are hereby granted as indicated for the construction and maintenance of all public utilities. The streets are hereby dedicated to and for the use of the public. All abutters rights of Access to or from Harry, over and across the south line of Lot 15, Block 2, are hereby granted to the City of Wichita, provided however that Lot 15, Block 2, shall have access to Harry at 2 points as shall be determined by the City Engineer of the City of Wichita, Kansas.

Casado-McKay Properties, a partnership

Partner
Arthur J. Casado
Partner
Dorothy L. McKay
Partner
John W. McKay, Jr.

State of Kansas) S.S. The foregoing instrument was acknowledged before me, this _____ day of _____, 1981, by Arthur J. Casado, Dorothy L. McKay and John W. McKay, Jr. Partners of Casado-McKay Properties, a partnership.

My Comm. Exp. _____ Notary Public

This plat of "GUY'S ADDITION", Wichita, Kansas, has been submitted to and approved by the Wichita-Sedgewick County Metropolitan Area Planning Commission, Wichita, Kansas. Dated this _____ day of _____, 1981.

Wichita-Sedgewick County Metropolitan Area Planning Commission.

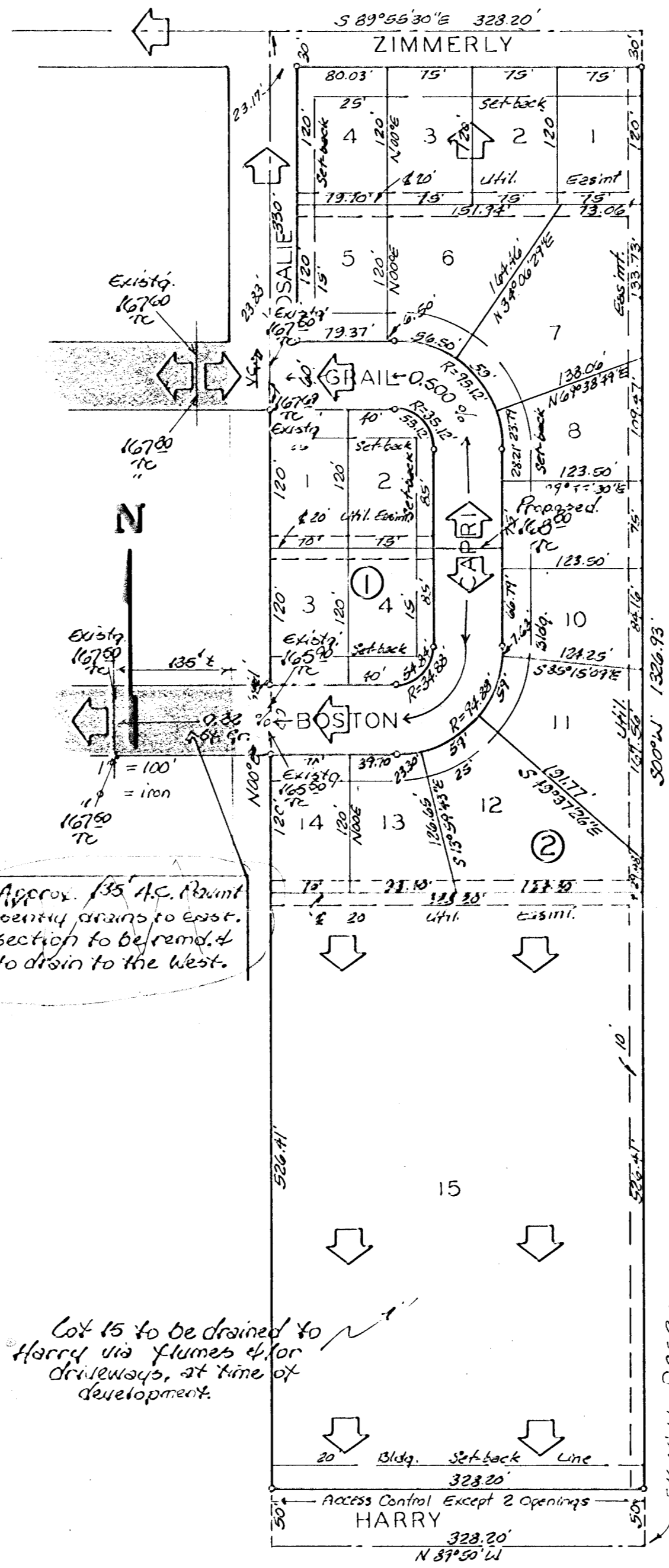
Chairman
James L. Gardner II.
Secretary
Robert A. Lakin

This plat approved and all dedications shown hereon accepted by the Board of Commissioners of the City of Wichita, Kansas, this _____ day of _____, 1981.

Mayor
Robert G. Knight
City Clerk
Donald C. Givick

This plat approved and all dedications shown hereon accepted by the Board of Commissioners of Sedgewick County, Kansas, this _____ day of _____, 1981.

Chairman
Donald E. Broop
Commissioner
Tom Scott
Commissioner
Jack Spratt
County Clerk
Dorothy K. White



Entered on transfer record this _____ day of _____, 1981.

County Clerk
Dorothy K. White

State of Kansas) S.S. This is to certify that this plat has been filed for record in the office of the Register of Deeds, this _____ day of _____, 1981, at _____ o'clock _____ M., and is duly recorded.

Register of Deeds
Beite F. Meant
Deputy
Pat Kettler