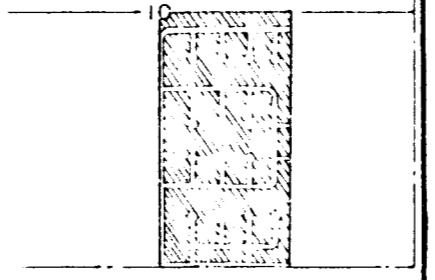
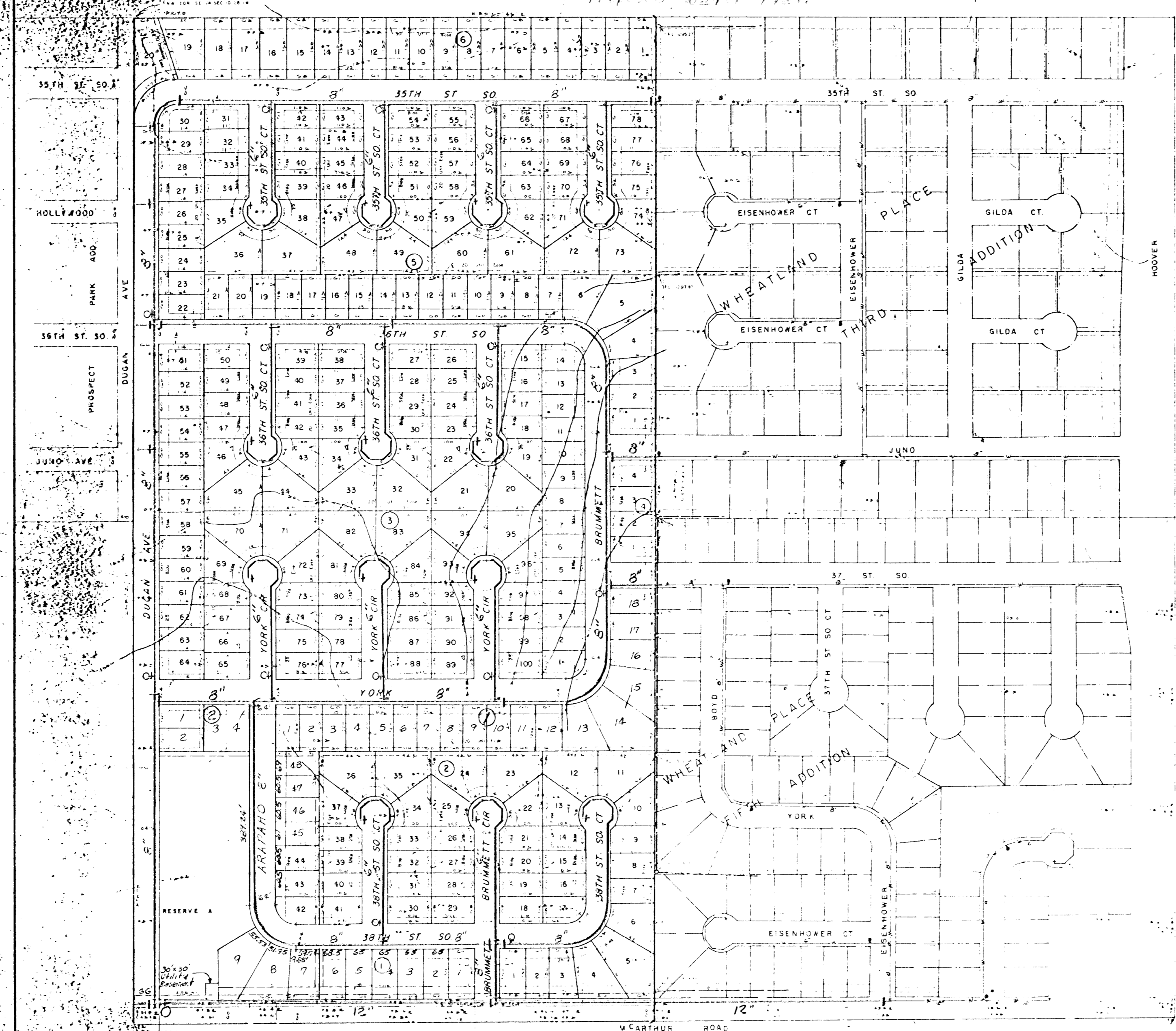


"REVISED"
PRELIMINARY PLAT
GRAY'S SECOND ADDITION
Proposed Water Plan



VICINITY MAP
1" = 1000'



FOR BILLY GRAY
204 N WOODCHUCK
WICHITA, KS 67213

LEGEND
Existing H₂O Mains — W — 8" — BM 1307.01 TOP OF IRON AT THE NE COR
Existing Fire Hydrants — W — 8" — SE 1/4 SEC 10-28-18
Proposed H₂O Mains — W — 8" —
Proposed Fire Hydrants — W — 8" —

TOP MADE JUNE 12, 1979

LLP 3-24-87

LOWELL D HIGH
1542 SO ST FRANCIS
WICHITA, KS 67211