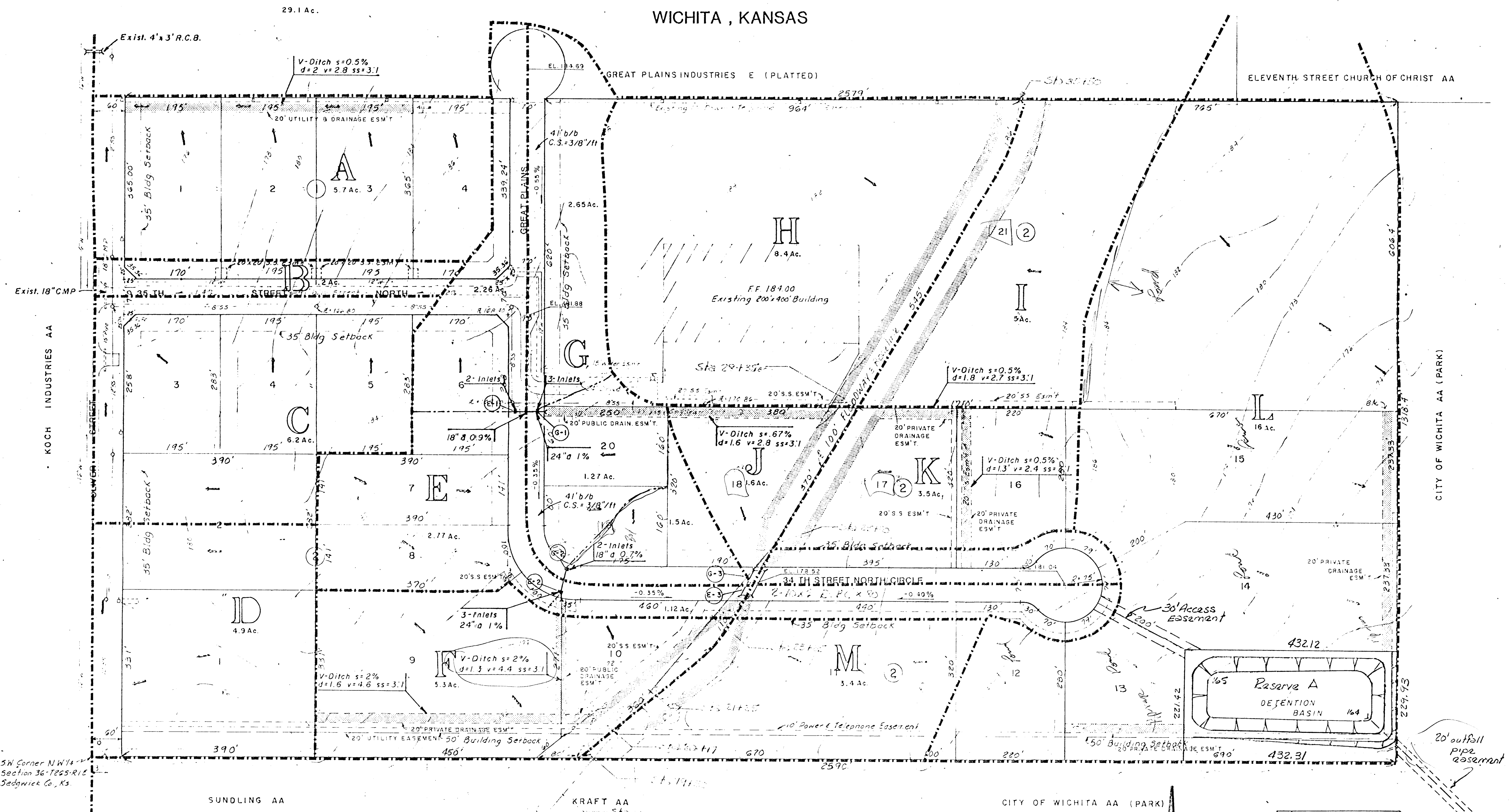


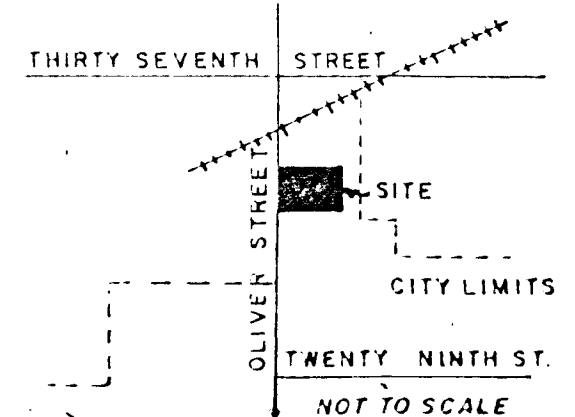
DRAINAGE PLAN

GREAT PLAINS BUSINESS PARK ADDITION

WICHITA, KANSAS



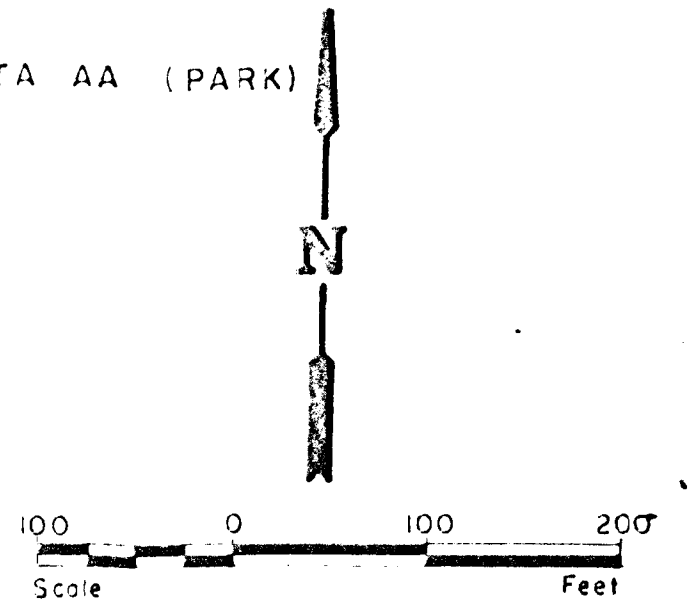
- A Area Notation for Computation Purposes
- Drainage Boundary
- Drainage Ditch



OWNER:
Great Plains Industries, Inc.
1711 Longfellow Lane
Wichita, Ks. 67207
686-7361

ENGINEER:
Poe & Associates of Kansas, Inc.
1720 E. Morris
Wichita, Ks. 67211
262-1497

B.M. (City Datum) "Q" Cut S.W. Cor. of East Side of R.C.B. Crossing Oliver 135' South of R.R. Elev. 177.50
Vert. Ground Control By Flood Control 1957. Features From Approved Contr. Plans Oct. 15, 1979



CITY OF WICHITA
Approved By _____
Date: _____

*GREAT PLAINS BUSINESS PARK ADDITION
DRAINAGE PLAN*
Note: Drainage arrows indicate lot drainage
under development conditions.
Detention Pond Layout added 10-16-81
Basement area added 10-19-81 Exhibit A