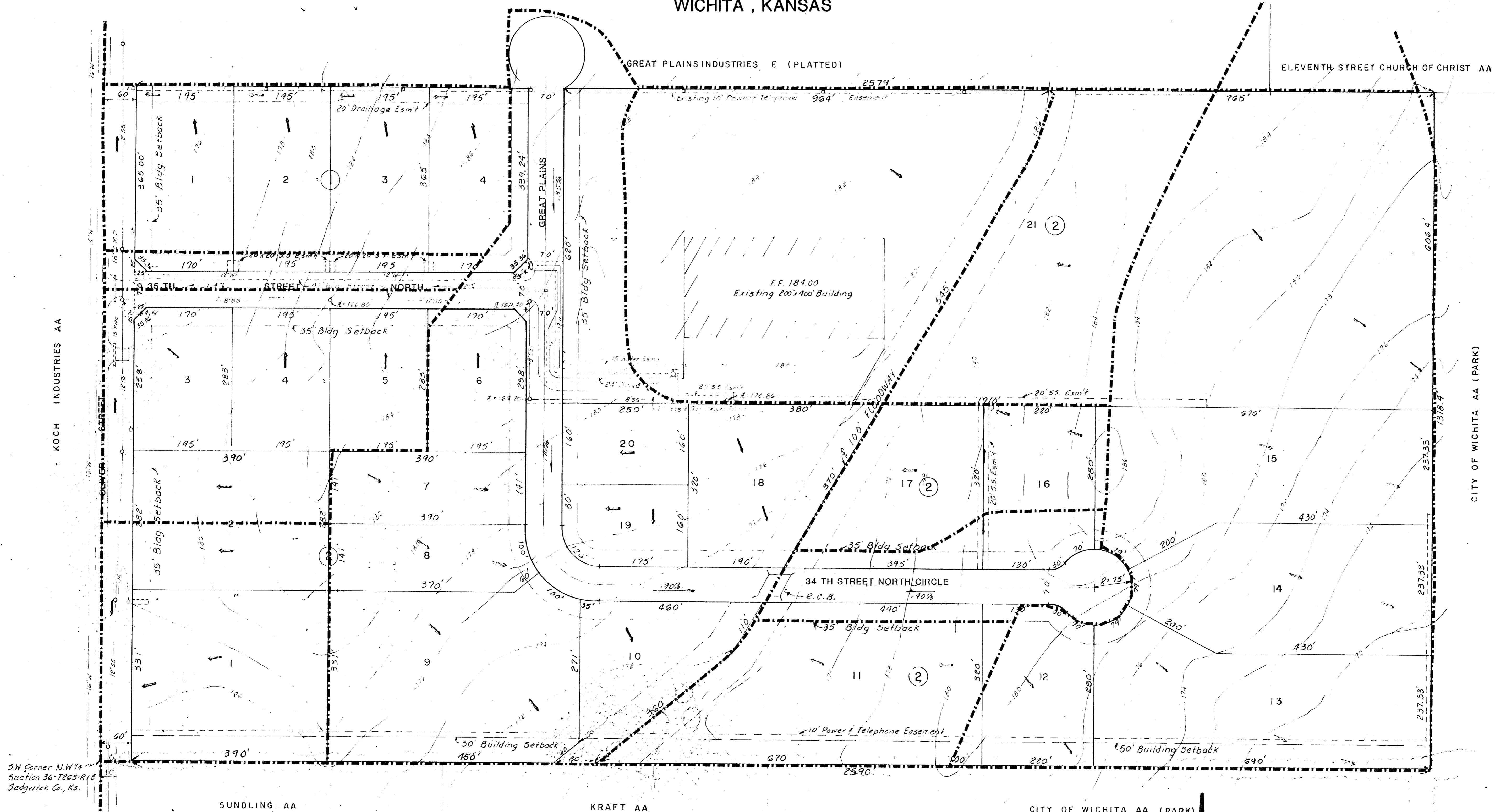


**DRAINAGE CONCEPT**  
**GREAT PLAINS BUSINESS PARK ADDITION**  
**WICHITA, KANSAS**

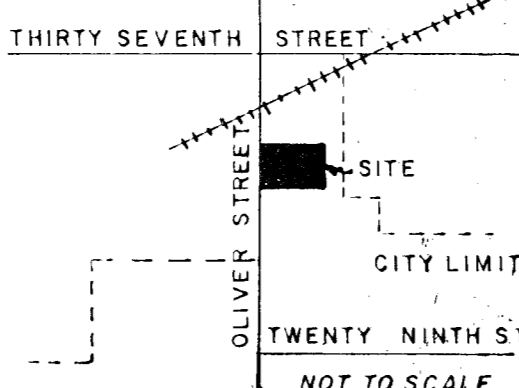


SW Corner N.W. 1/4  
 Section 36-T26S-R1E  
 Sedgwick Co., Ks.

SUNDLING AA

KRAFT AA

CITY OF WICHITA AA (PARK)



**OWNER:**  
 Great Plains Industries, Inc.  
 1711 Longfellow Lane  
 Wichita, Ks. 67207  
 686-7361

**ENGINEER:**  
 Poe & Associates of Kansas, Inc.  
 1720 E. Morris  
 Wichita, Ks. 67211  
 262-1497

**CITY OF WICHITA**  
 Approved By \_\_\_\_\_  
 Date: \_\_\_\_\_

Note: Drainage arrows indicate net drainage under development conditions.

B.M. (City Datum) "13" Cut S.W. Cor. of East Hdl. of R.C.B. Crossing Oliver 133' South of R.R. Elev. 17.750  
 Vert. Ground Control By Flood Control 1957. Features From Approved Constr. Plans Oct. 15, 1979

