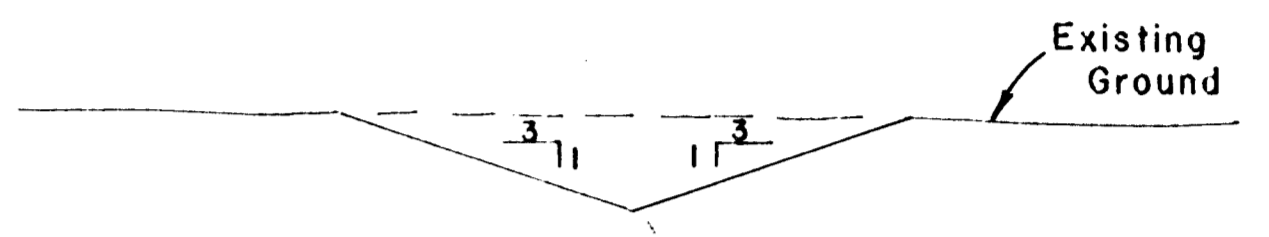
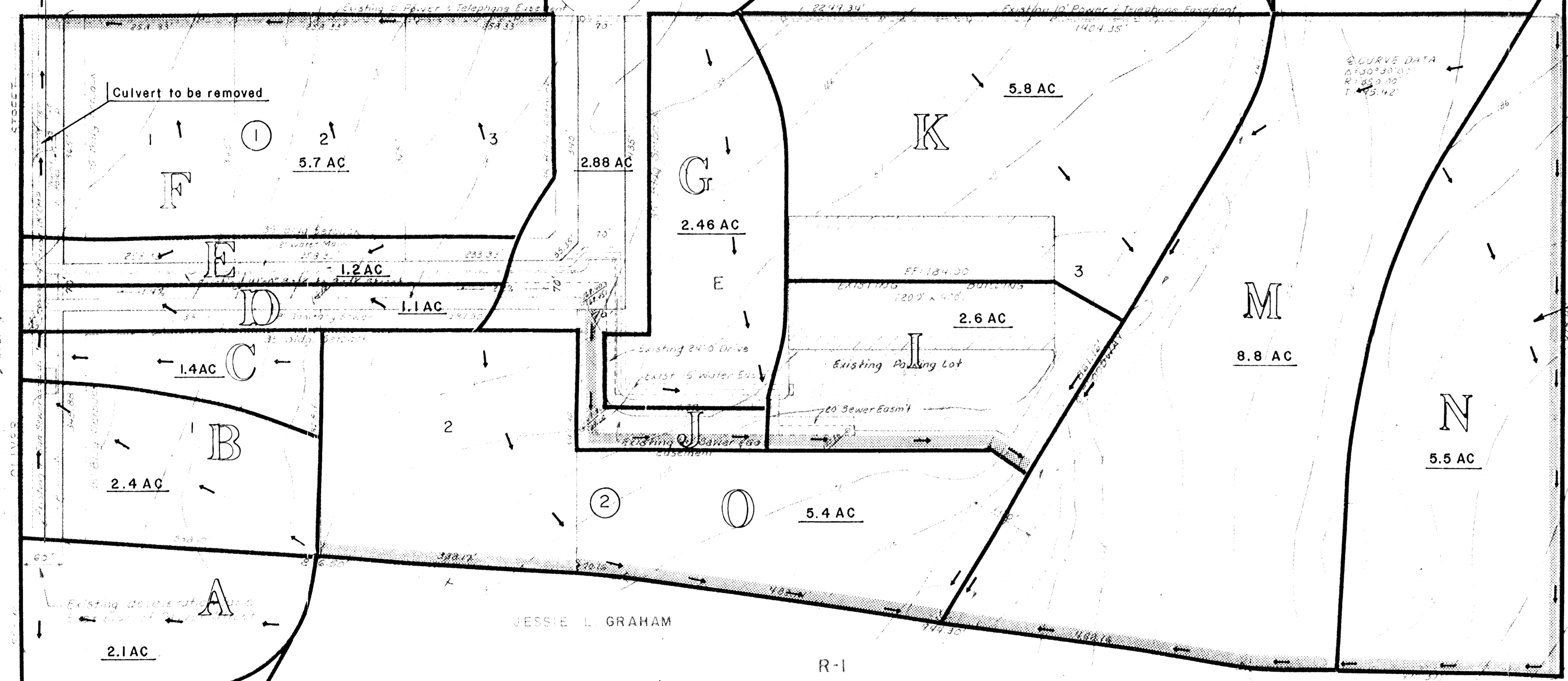


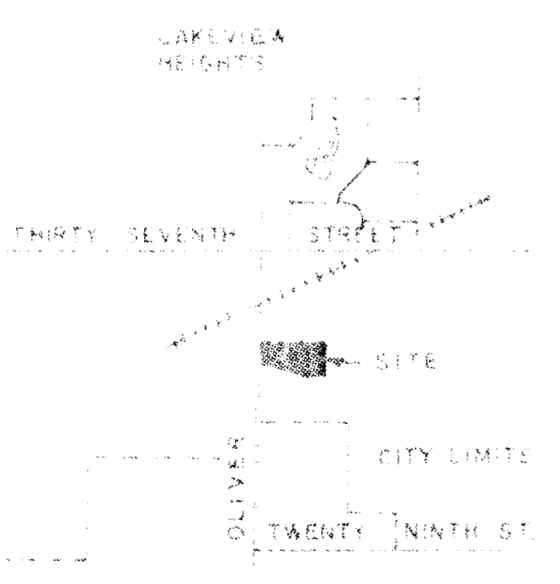
KOCH  
R-1  
CHARLES



Area "N" to be regraded to allow ditch drainage to floodway.

**LEGEND**

- Area Notation for Computation Purposes
- Drainage Boundary
- Public Drainage Easement



**OWNER:**  
Great Plains Ventures, Inc.  
1711 Longfellow Lane  
Wichita, Ks. 67207  
686-7361

**ENGINEER:**  
Poe & Associates of Kansas, Inc.  
1720 E. Morris  
Wichita, Ks. 67211  
262-1497

Approved By: Chris J. Burt  
Date: 7/12/80



Vertical Ground Control By Flood Control, 1967  
Features From Approved Construction Plat 10, 1979

B.M. (City Datum) "D" Cut on S.W. Cor. of East Hdwl. of R-1 Culvert crossing Oliver about 135' South of Q. Railroad track Elev. 177.50

<b>dp</b>	GREAT PLAINS BUSINESS PARK ADDITION	
	DRAINAGE CONCEPT	
POE & ASSOCIATES CONSULTING ENGINEERS	ENGINEER: J.M.T.	ENG. TECH: J.M.W.
	DRAWN BY: J.W.	SCALE: Noted
DATE: July 1980		SHEET 1 OF 1