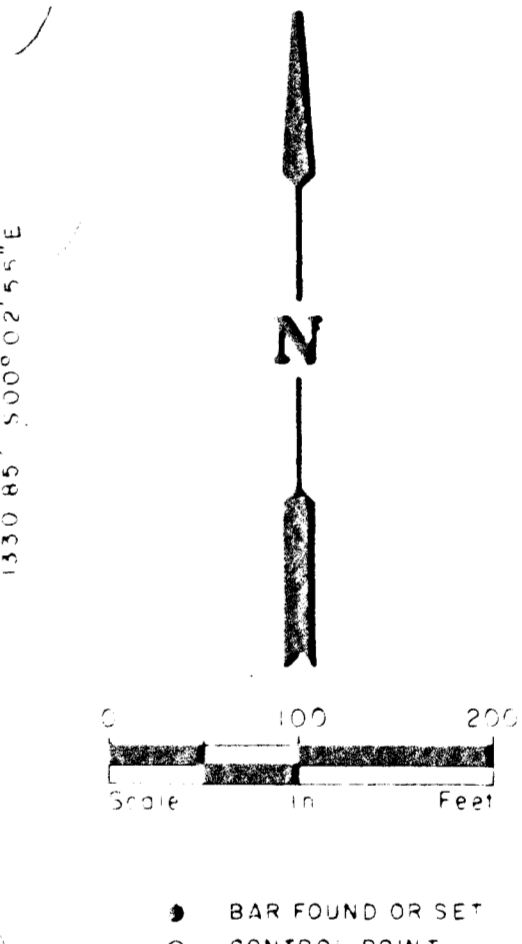
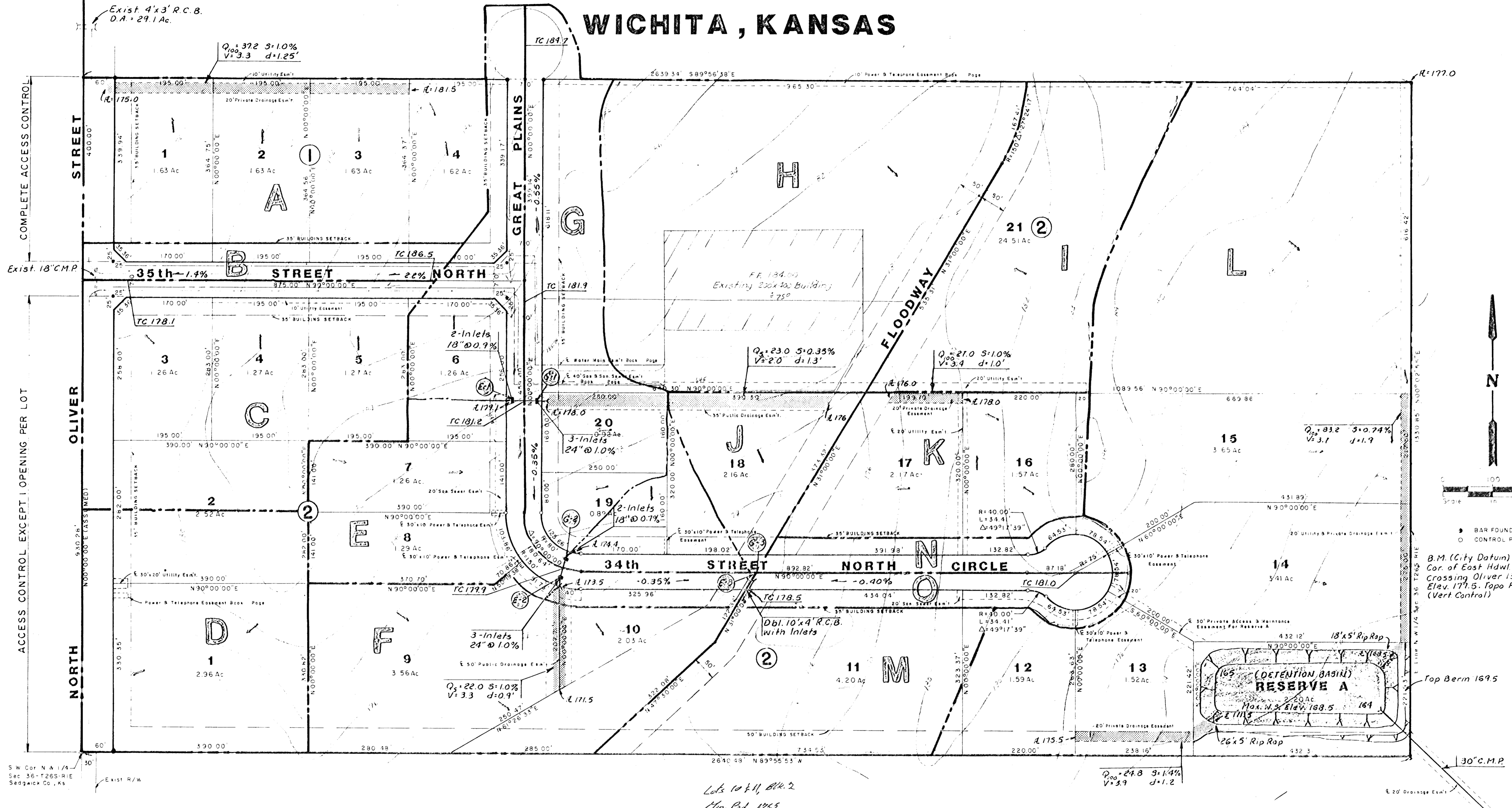


GREAT PLAINS BUSINESS PARK ADDITION

WICHITA, KANSAS



B.M. (City Datum) "d" Cut S.W. Cor. of East Hdl. of R.C.B. Crossing Oliver 133.50 of R.R. Elev. 177.5. Topo F.C. 1951 (Vert Control)

NOTE: All ditches are 4' wide flat bottom with 4:1 side slopes unless noted otherwise.

A Area Notation for computation purposes
 --- Drainage Boundary
 - - - Drainage Ditch

Note: Drainage arrows indicate lot drainage under development conditions

	GREAT PLAINS BUSINESS PARK ADDITION	
	Drainage Plan	
	REVISED: 11-5-81	
	ENGINEER: K.H.	CHECKED BY: J.W.
	DRAWN BY: J.W.	SCALE: NOTED
DATE: NOV. 1981	SHEET 1 OF 1	

POE & ASSOCIATES
CONSULTING ENGINEERS